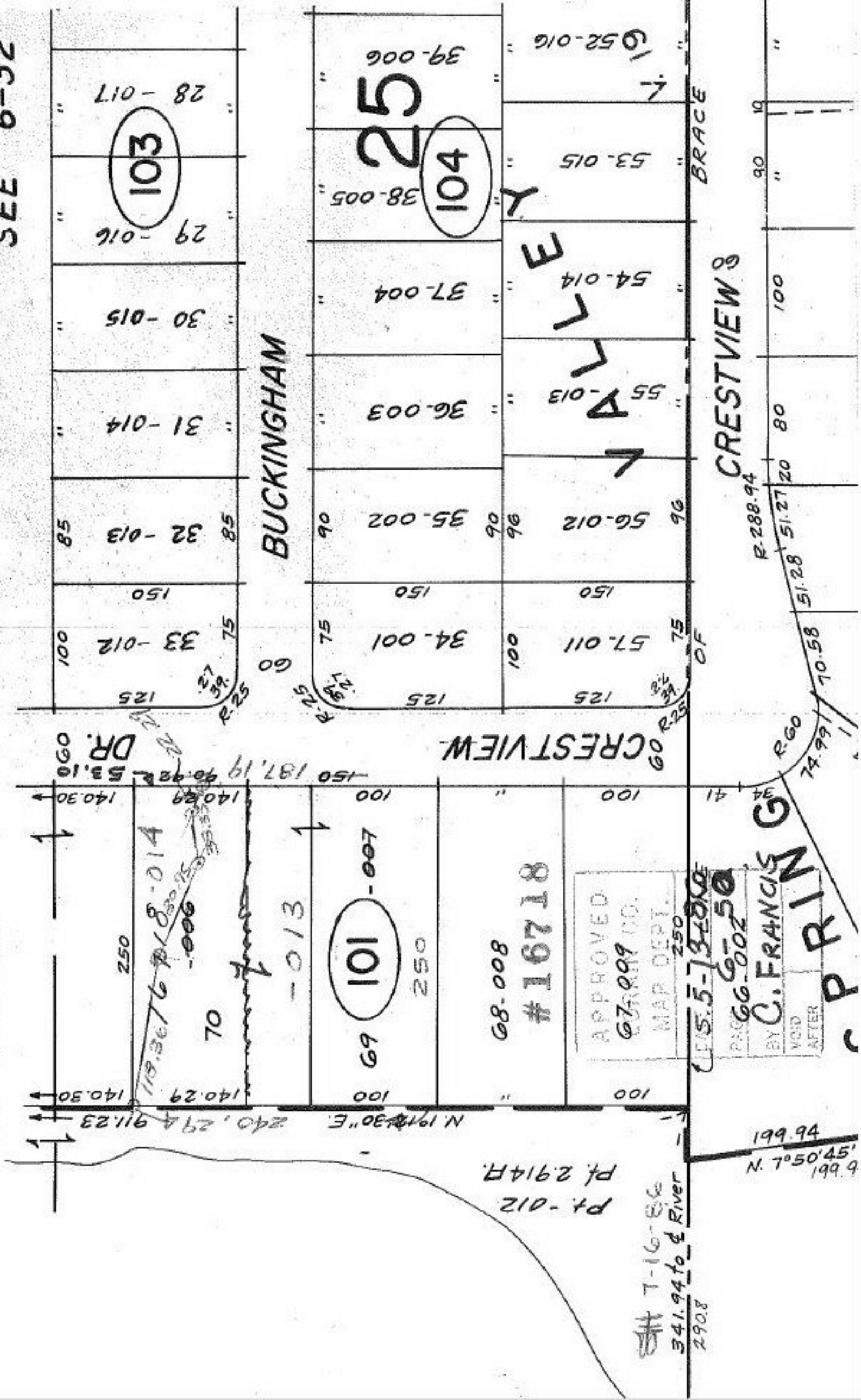


Prior Deed 1343/823
 Surveyed By: K.S.A
 06-23-025-101

C=1:1000000,000

SEE 6-32



APPROVED
 070099 CO.
 MAP DEPT.
 250
 C=1:5-73-2000
 PAC 66-600250
 BY C. FRANCIS G
 VOID AFTER

46.961
 N. 7°50'45"