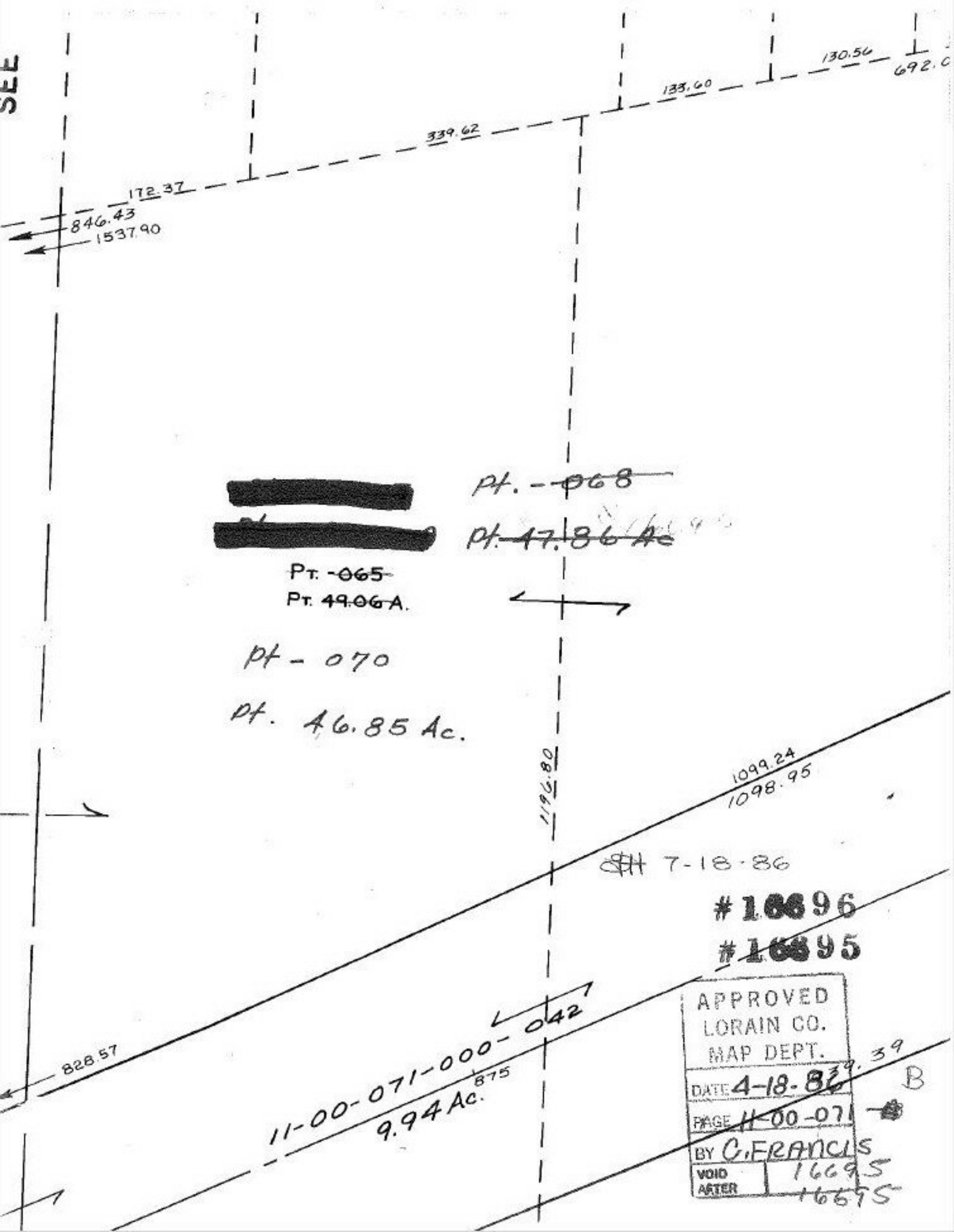


SEE



133.60

130.56

692.0

339.62

172.37

846.43

1537.90

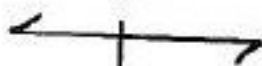
~~_____~~
~~_____~~

Pt. -068

Pt. 47.86 Ac

Pt. -065

Pt. 49.06A.



Pt. -070

Pt. 46.85 Ac.

1196.80

1099.24

1098.95

7-18-86

#16896

#16895

828.57

11-00-071-000-042
 9.94 Ac.
 875

APPROVED
 LORAIN CO.
 MAP DEPT.

DATE 4-18-86

PAGE 11-00-071

BY C. FRANCIS

VOID AFTER

16695

16695

B