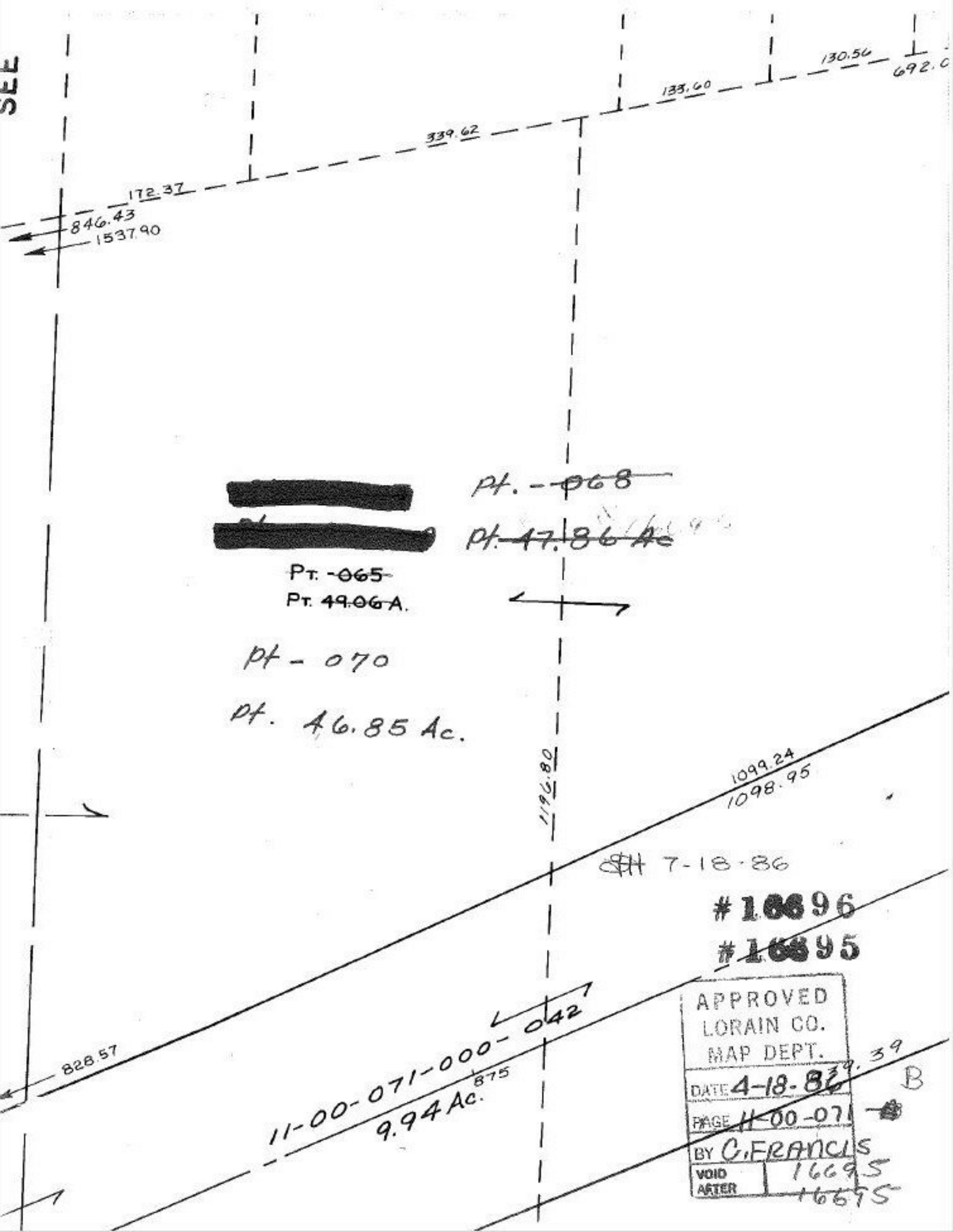


SEE



133.60

130.56

692.0

339.62

172.37

846.43

1537.90

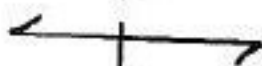


~~Pt. -068~~

~~Pt. 47.86 Ac~~

Pt. -065

Pt. 49.06A



Pt. -070

Pt. 46.85 Ac.

1196.80

1099.24

1098.95

7-18-86

#16896

#16895

828.57

11-00-071-000-042
9.94 Ac.

875

APPROVED
LORAIN CO.
MAP DEPT.

DATE 4-18-86

PAGE 11-00-071

BY C. FRANCIS

VOID
AFTER

16695
16695

B