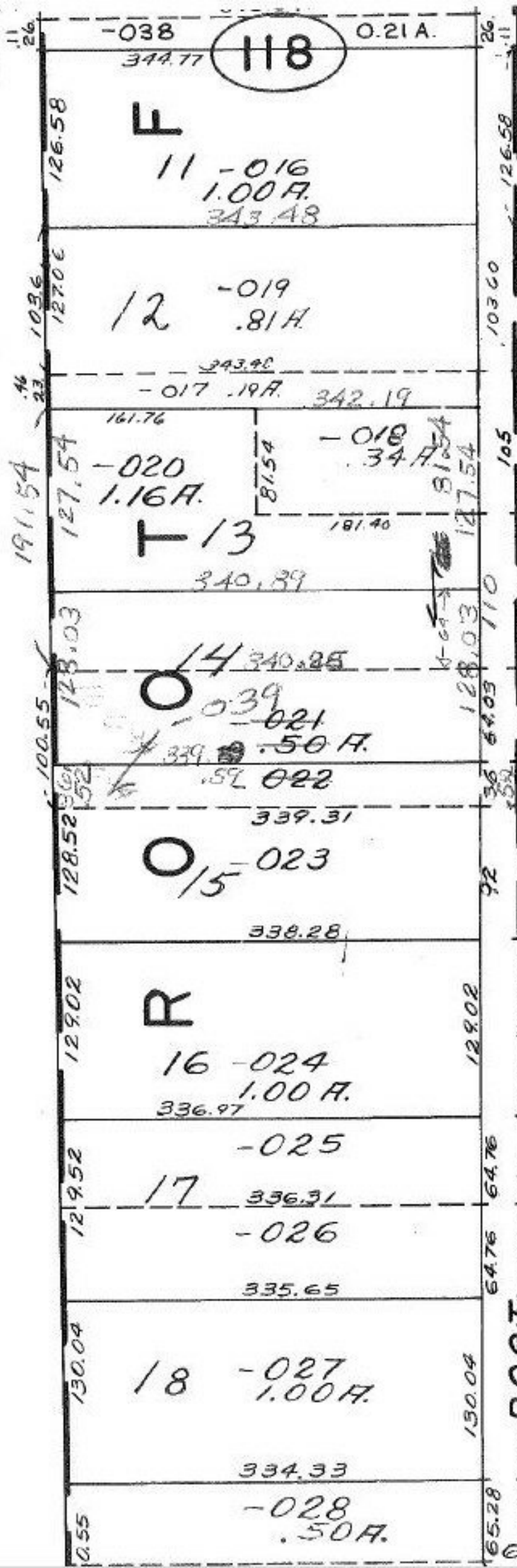


Information taken from old maps

SEE



350	467.30	.88 A.
-046	1.00 A.	
467.84		
-061	.97 A.	
469.92		
-059	.97 A.	
472		
-062	.46 A.	
474.05		
468.75		
-056	1.07 A.	
469.23		
-023	.75 A.	
469.44		
-024	.75 A.	
444.78		
-025	.50 A.	
445		
-026	2.00 A.	
445		

COMBINATION

7-17-86
 # 16684

APPROVED
 LORAIN CO.
 MAP DEPT.
 DATE 4-15-86
 PAGE 7-00-021-D
 BY C. Francis
 VOID
 NOTES

-027, .71 A.