

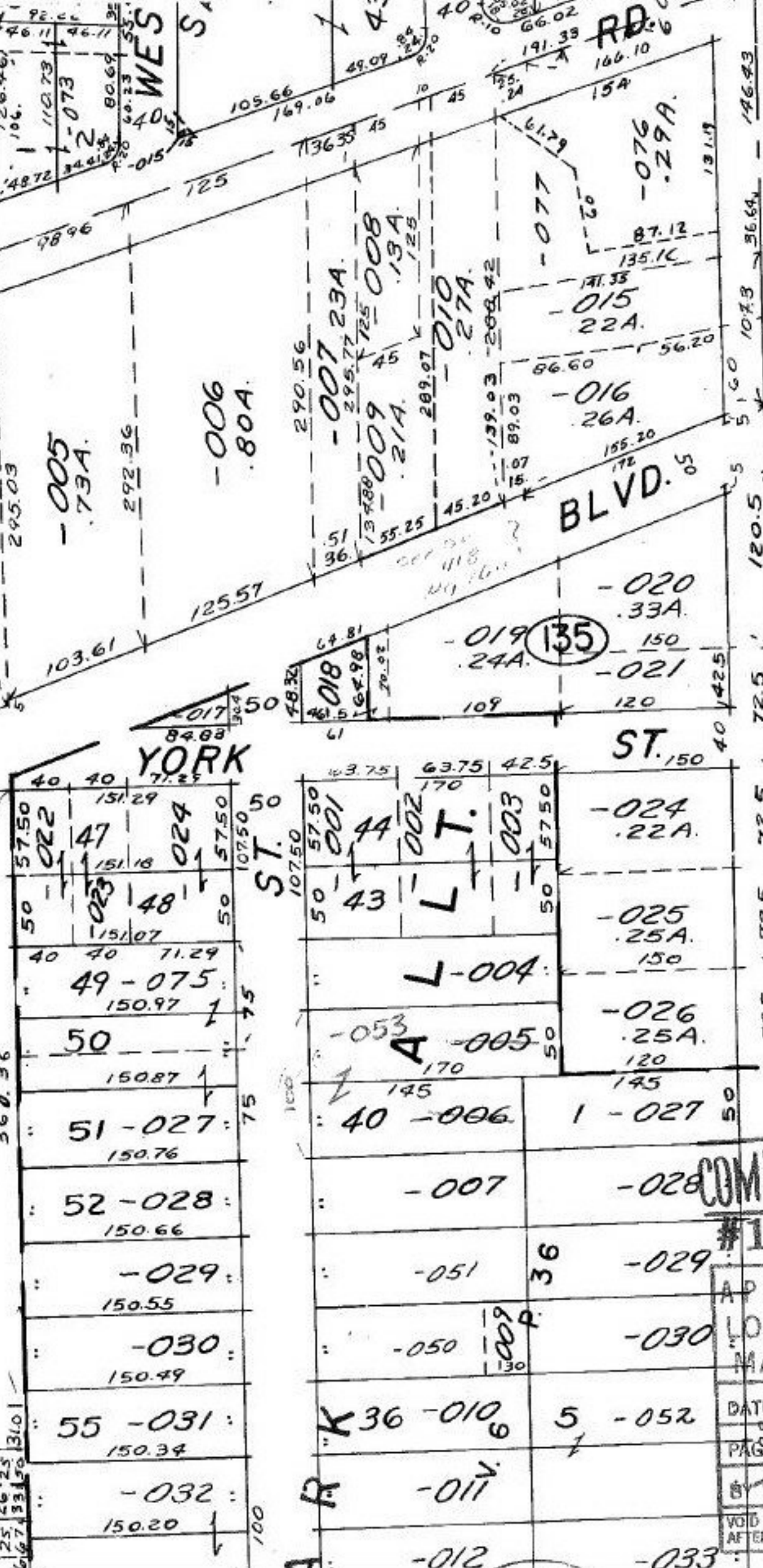
135

-106
6.95A.

477.91
77.72
77.55
77.39
0.28 Ac

360.36

25
26
25
1667
33
50
310



SEE 4-00-007-A

4-14-86

COMBINATION

#16670

APPROVED
LORAIN CO.
MAP DEPT.

DATE 4.7.86

PAGE 4.00-006-D

BY T. McMain

VOID
AFTER