

747.78  
747.95

Pt. -012  
Pt. 47.96F.

2906.53  
2902.02

MAP CORR  
ONLY  
SEE  
A-C

Pt. 014  
Pt. 24.10F.

782.10

Stone Mon.

Pt. -016  
Pt. 26.00F.

2883.45  
2874.30

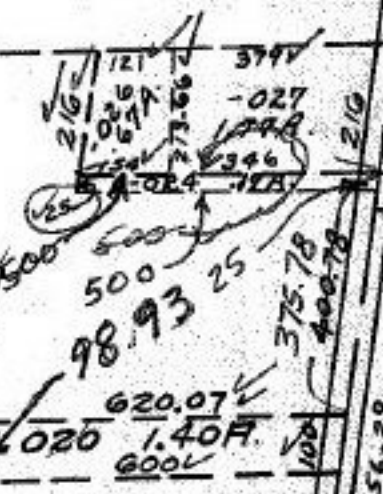
20

-017  
20.16F.

101

1163.45  
1183.45

-025  
22.86F.



735.90  
738.01

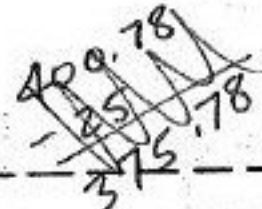
1200V

980.41

2769.36  
2780.41

-021  
25.00F.

2721.29  
2711.94



MAP CORR.  
PER F.E. COLBERT  
(SEE ATTACHED FOR  
DEEDS)

-022  
25.30F.

2650.56

-023  
46.43F.

386.10  
387.34

397.32

779.46 D.  
848.10

500

Pt. -001 Pt. 13.02F.

SEE 4-G

#16634

APPROVED  
LORAIN CO.  
MAP DEPT

DATE 3/12/86

PAGE 4-C

BY T. McMain

VOID  
AFTER

JAYCOX  
415.80  
409.20  
409.78  
406.78  
406.29

E 1/2

SECT

KE CITY