

T R A C T

-003  
48.60A.

3531.21

-008  
47.90 A.



650  
222  
98

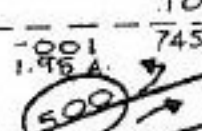
1014.75



-002

3531.21

6.92 A.



745

A.

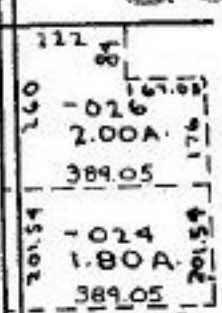
SEE SURVEY  
WM. BARTON  
cc. 1. 71, 189

COMBINATION

-003  
64.06 A.

8/12/86

#16619



-025  
23.81A.

-028  
31.81A.

-010  
5.35 A.

-028  
7.90 A.  
LORAIN CO.

032  
2-17A

-024  
1.80A.

-031  
31.64 A.

413.14

1207.06

743.62

3-4-86

2122G

8.71 A.  
C. FRANCIS

19.44  
225.56

384.52

345

433.34

437.47

-008  
4.00A.

724.03

384.71

-002  
2.00A.

-016  
2.51A.

-018  
2.51A.

474.85

STEWART

531.09

207.08

17.80

-006  
1.00A.

245

1486

821.20

#16555

APPROVED  
LORAIN CO.  
MAP DEPT.

DATE 1-21-86

PAGE 1 of 21G

BY T. McMan

T R A C T

-005  
51.00 A.