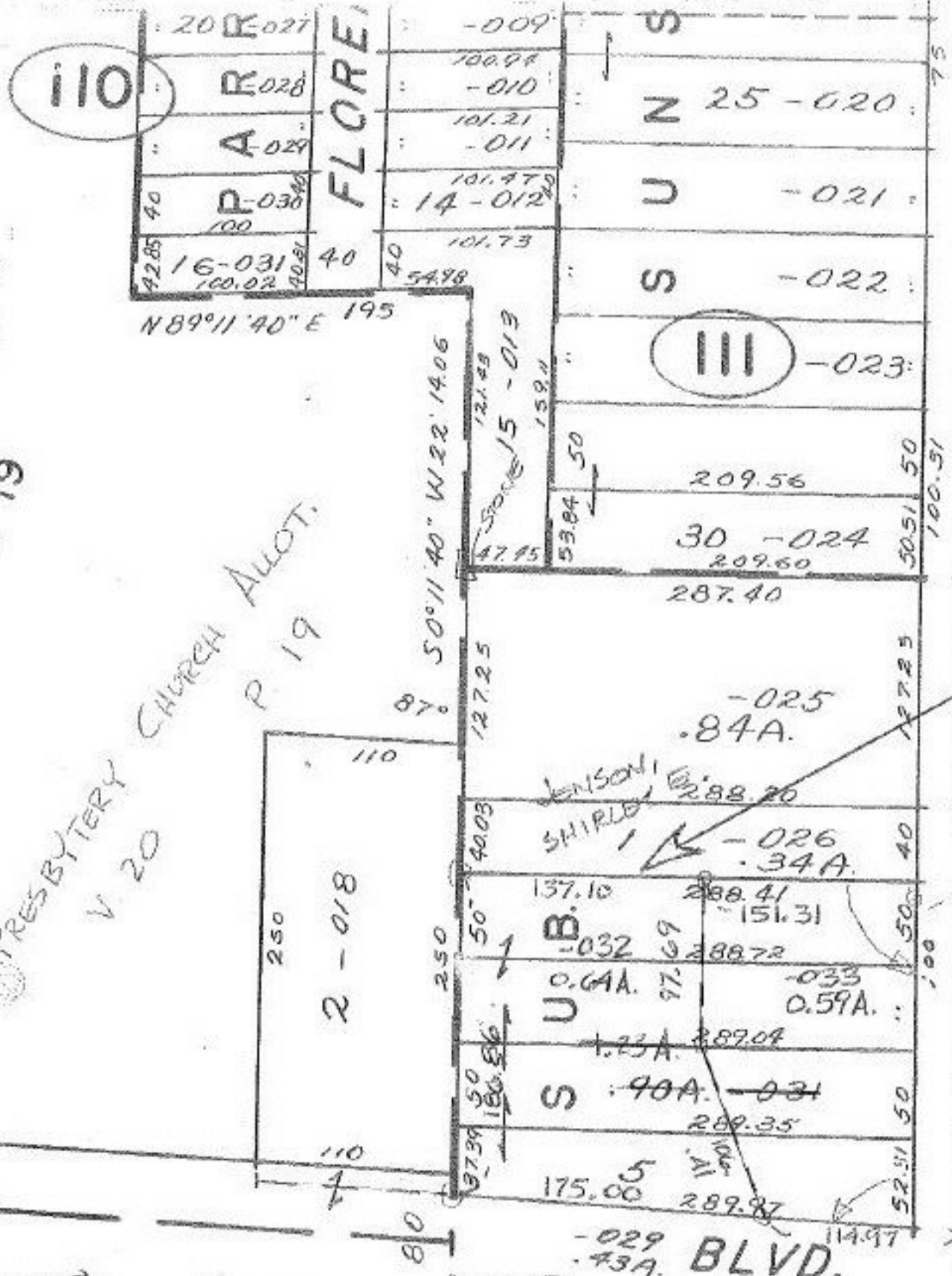


P. 19
8.19.

PRESBYTERY CHURCH AUCTION
P 19
V 20



III

JENSON
SHIRLEY

BLVD.

SEE SURVEY

KLEINODER-SCHMIDT
& ASSOC.
CL. 1:100, 666

* NOTE - DIMENSION ON WEST LINE DISAGREES WITH DIMENSIONS ON PREVIOUS REGISTERED LAND 14/151, 14/232, 31/258 PER CONVERSATION W/ DAVID BLWELL KSA - WEST LINE WAS CALCULATED EVEN THOUGH IRON PINS WERE FOUND ON ALL 4 CORNERS OF SUBJECT PROPERTY. ONLY INTERIOR ANGLES OF NE & SE CORNERS WERE MEASURED.

SEE 4-00-019-C

#16615

| | |
|-----------------|--|
| APPROVED | |
| LORAIN CO. | |
| MAP DEPT. | |
| DATE 3-5-86 | |
| PAGE 4-00-019-B | |
| BY T. McMain | |
| VOID | |
| AFTER | |