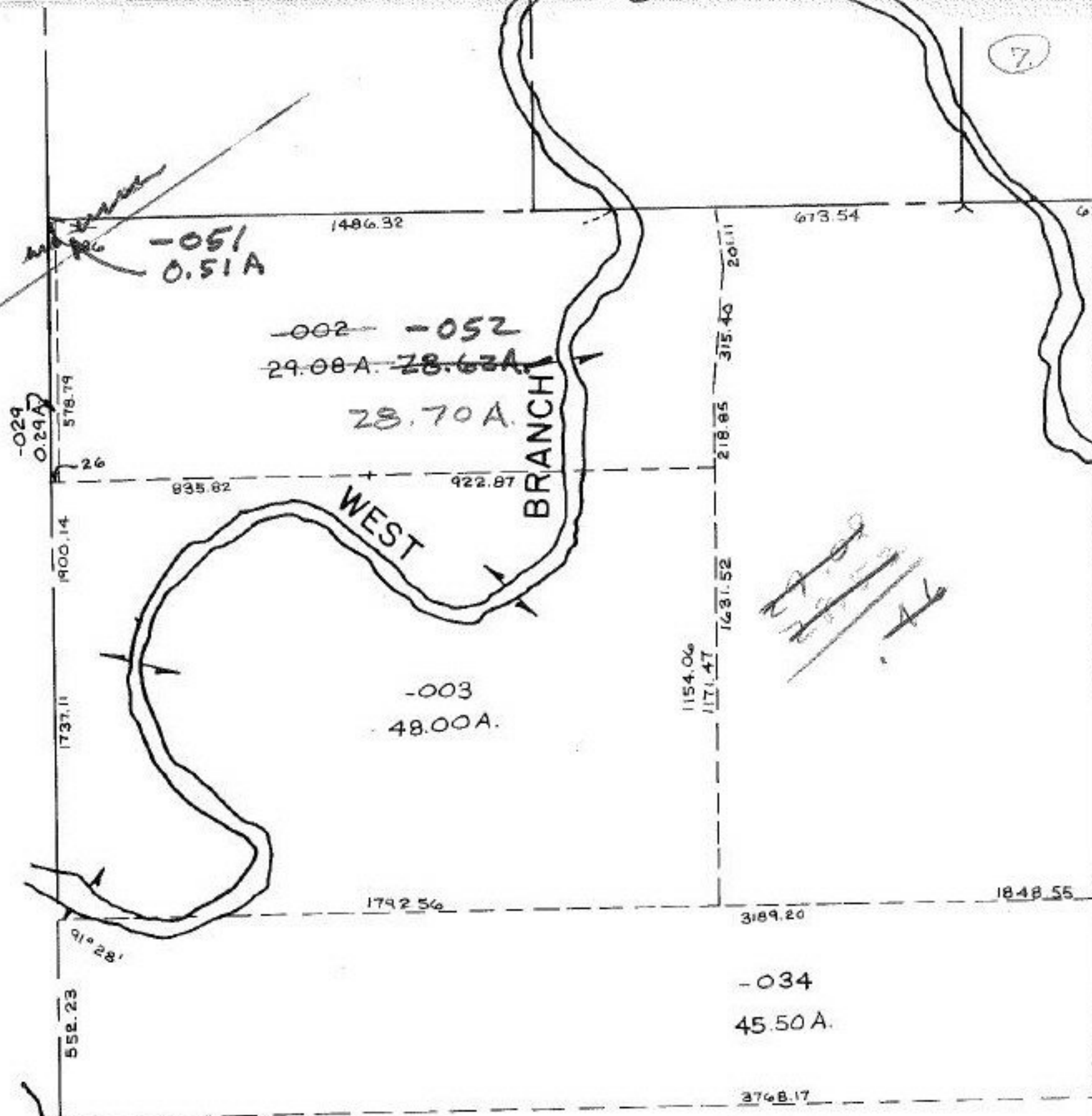


7



~~-029~~
0.29A

~~-002~~ ~~-052~~
29.08A. ~~28.63A.~~
28.70A.

WEST BRANCH

-003
48.00A.

-034
45.50A.

Pt. 10-00-020-
102-035
Pt. 72.00A

SN 12-1-86
#16614

APPROVED LORAIN CO. MAP DEPT.	
DATE 11-17-86	
PAGE D-F	
BY <i>[Signature]</i>	
VOID AFTER	16614

19

-008
153.97A.