

HERVANE

ESTATES

VOL. 30 PG. 6

SN 12-1-86
#16614

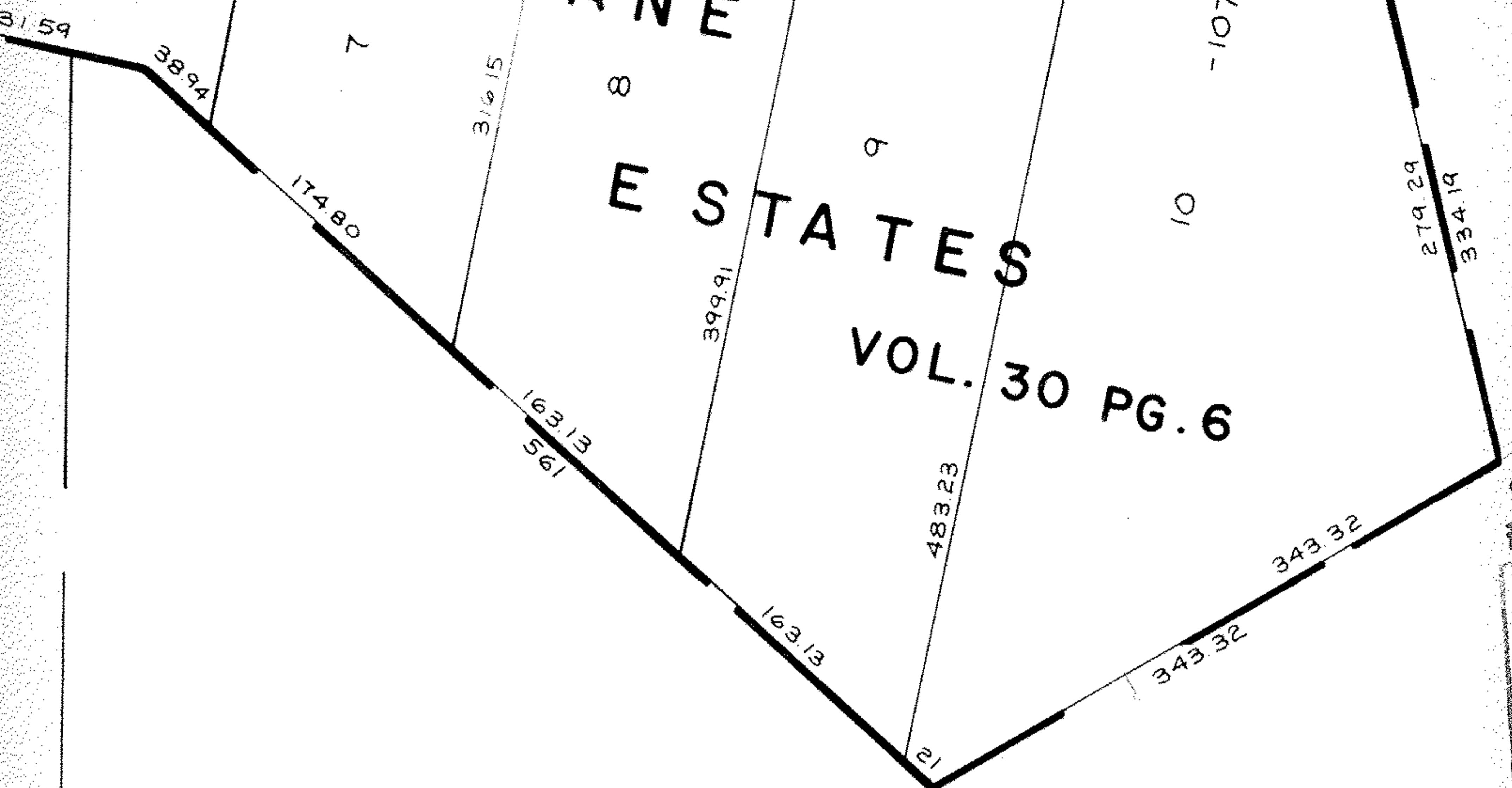
APPROVED
LORAIN CO.
MAP DEPT.

DATE 11-17-86

PAGE 10-00-0123

BY *[Signature]*

VOID
AFTER 16614



1 $\frac{2600t}{6082.41}$

Pt -138
Pt 41.67A.

#16614

$\frac{6455.28}{}$

~~Pt -074~~
~~Pt 115.42 A.~~

Pt -139
Pt 215.95 A.
209.36 A