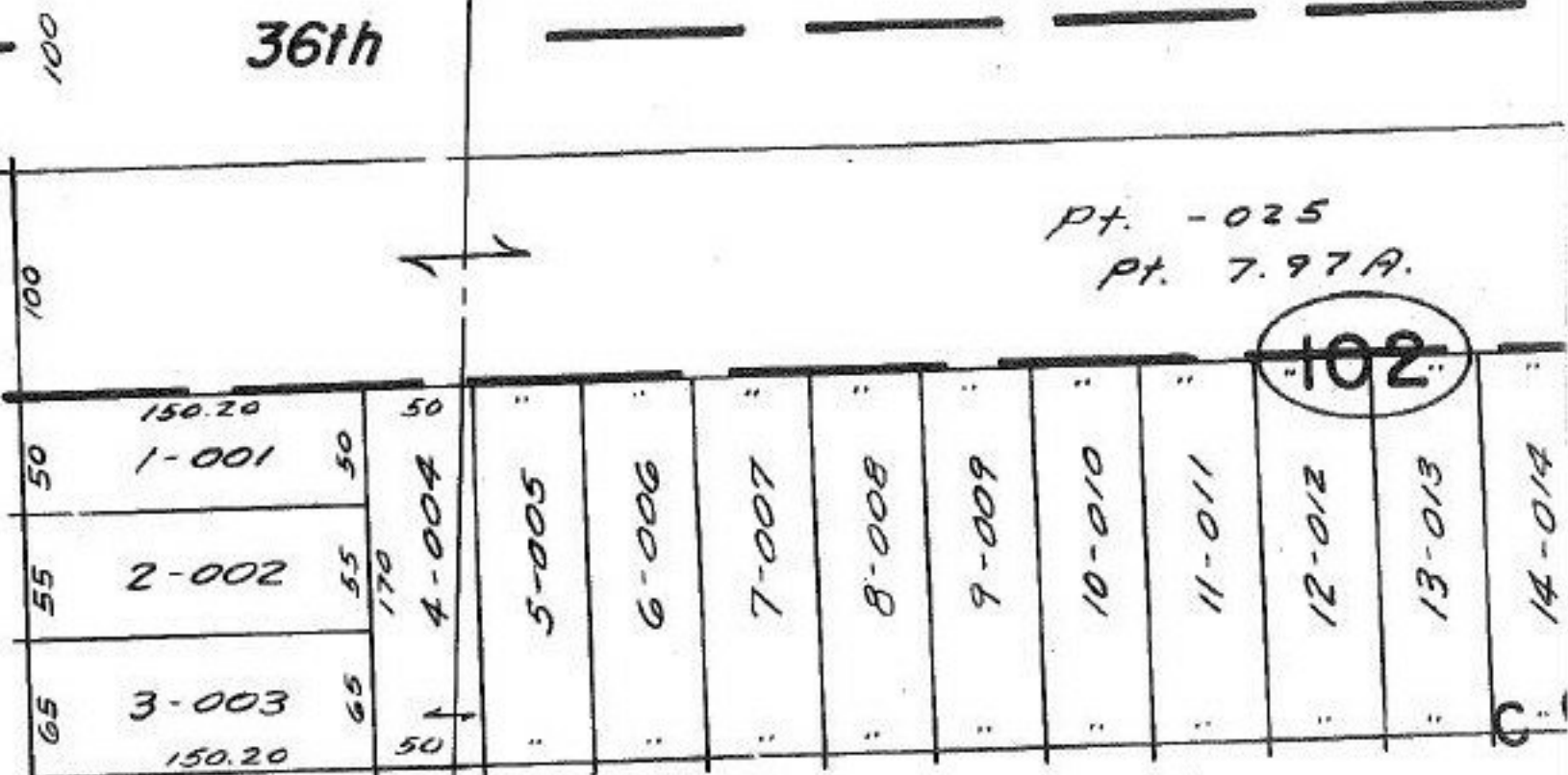


3-00-101-B

AV

SHEFFIELD LAND



Pt. -025
Pt. 7.97A.

DEV.

HOMWOOD

#16610

COMBINATION

APPROVED
LORAIN CO.
MAP DEPT.
DATE 2-25-86
PAGE 3 OF 100-A
BY T. McHair
VOID AFTER