

361.23

Twp

102.18

177.18

-003
7.07 A.

SEE SURVEY - WM. BARTON
C.L. 12 INF.

852.67

~~-004~~
2.00 A. -027
3.47 A

852.67

852.67

~~-005~~
~~4.90 A.~~

-028
3.43 A.

852.67

-017
4.43 A.

#16600



APPROVED
LORAIN CO.
MAP DEPT.
DATE 2-18-86
PAGE 3-00-104
BY T. McNeil
VOID AFTER

Twp 255.44

361.23

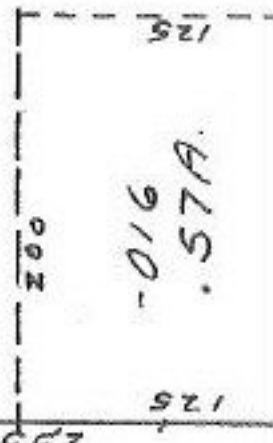
102.18

177.18

175 250

CLINTON

255.44



3-26-86