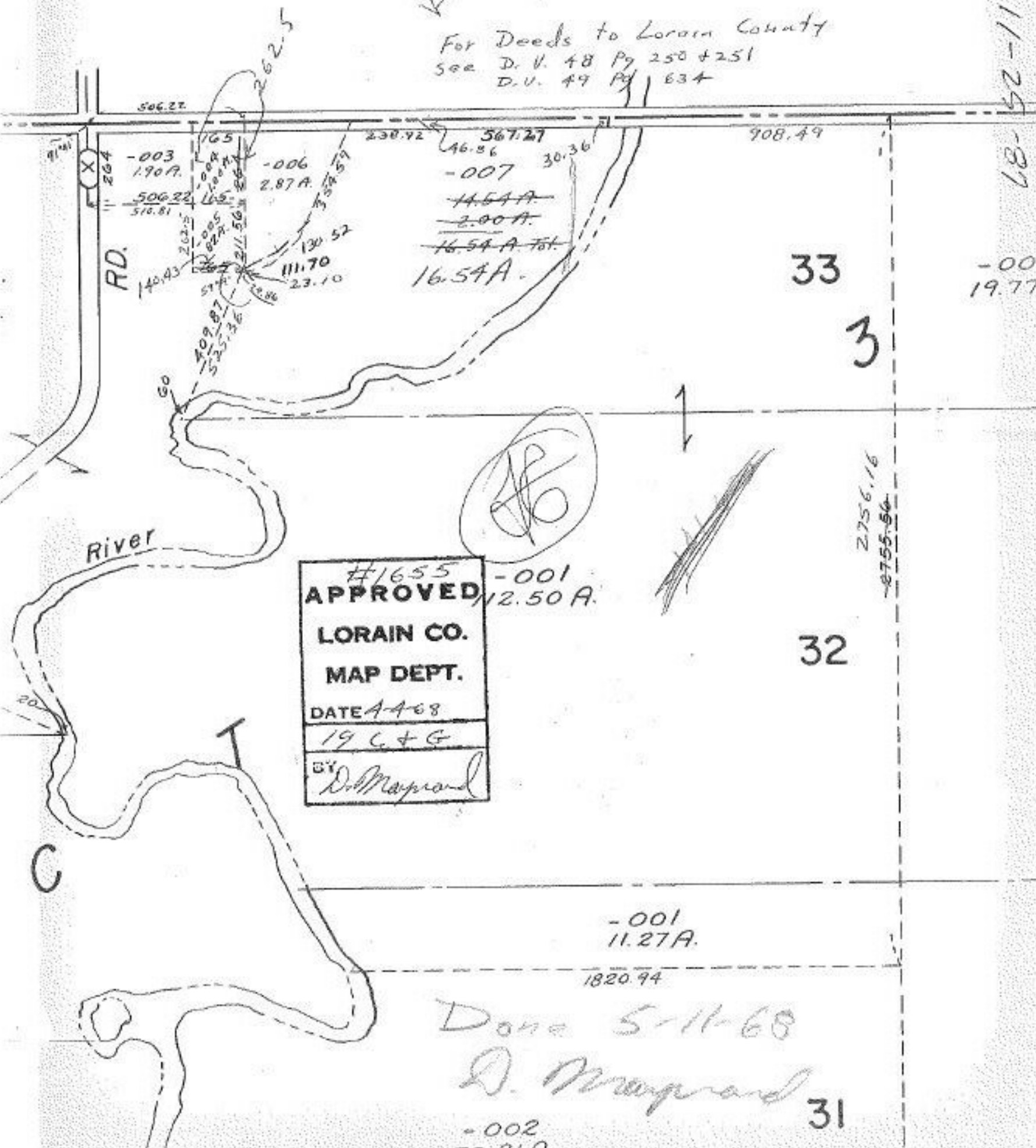


Also add this statement to 19-c

For Deeds to Lorain County
see D. V. 48 Pg 250 + 251
D. V. 49 Pg 634

11-25-87



#1655
APPROVED
 LORAIN CO.
 MAP DEPT.
 DATE 4-4-68
 19 C & G
 BY D. Maynard

Done 5-11-68

D. Maynard

31

33

3

32

-001
19.77

-001
11.27 A.

1820.94

-002
70.81 A.

2756.16
-8755.56

RD.

River

C

506.27

908.49

230.92 567.27
 46.86
 -007 30.36
 14.54 A.
 2.00 A.
 16.54 A. Tot.
 16.54 A.

-003 1.90 A.
 506.22 165
 510.81
 140.43
 209.87
 525.36
 211.56
 130.52
 111.70
 23.10

