

-00
43.7

R T T

RD.

-002
23.00A.

5

-006
145.10
~~-003~~
~~152.00 A.~~

P. D. R.
992/956

T

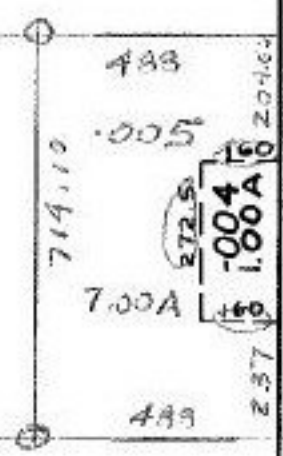
C

A

-005
193.86 A.

66
22
88
120
208
3

3085
4405
714.10
773
1010
1320



308
B/12/86/13

#16493

APPROVED	
LOUIS CO.	
MAY DEPT.	
DATE	12-10-85
PAGE	308
BY C. FRANCIS	
VOID	
AFTER	