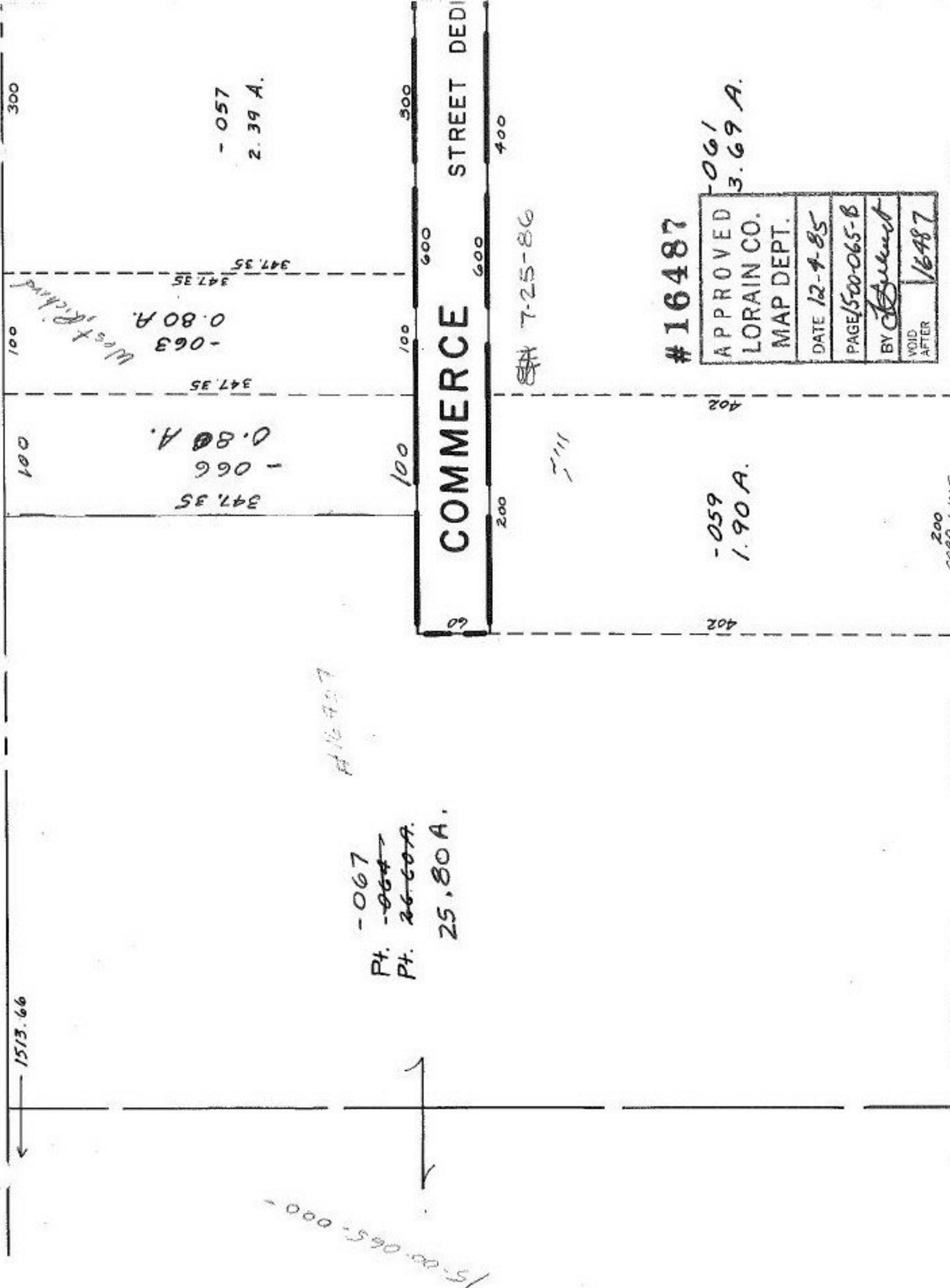


SEE 15-00-056-B



300

- 057  
2.39 A.

100

-063  
0.80 A.

100

-066  
0.80 A.

100

COMMERCE STREET DEDICATED

200

-059  
1.90 A.

100

600

300

600

400

7-25-86

#16487

APPROVED	
LORAIN CO.	
MAP DEPT.	
DATE	12-4-85
PAGE	500-065-B
BY	<i>[Signature]</i>
VOID AFTER	16487

-061  
3.69 A.

400

200  
CORP LINE

2177.83 LORAIN COUNTY PLATT RES 73-377 4-19-72 - VII PAGE 16487

15-00-065-000

16487

-067  
Pt. ~~-066~~  
Pt. ~~26-60A~~  
25.80 A.