

102

#17

-069
15.08 A.
15.17 A

CL. 1: 1869
Ac. 29.26 A. CALE

-048
9.50 A.

#16474

APPROVED
LORAIN CO.
MAP DEPT.

DATE 12-16-85

PAGE II 00.100.B

BY T. McMan

VOID

29.387 A.
9.507 A.
19.883
4.710
15.173

1599.78
1072.88

1072.88

526.90

THIS ACREAGE
5.66 A. STAYS BUT
PARCEL NOW INCLUDES
30' STRIP TO WEST.
776/654
#1

1238/646
Ac. CALE 4.71 A
CL. 1: 10,526

-070
4.80 A.
4.71 A.

12/16/85

-009
5.66 A.

DEED
5.44 A.

776/654
#1

CORRECTION

-003
7.77 A. #16474

DEED 7.77 A

#16474

APPROVED
LORAIN CO.
MAP DEPT.

DATE 12-16-85

PAGE II 00.100.B

BY T. McMan

VOID

4-9-86

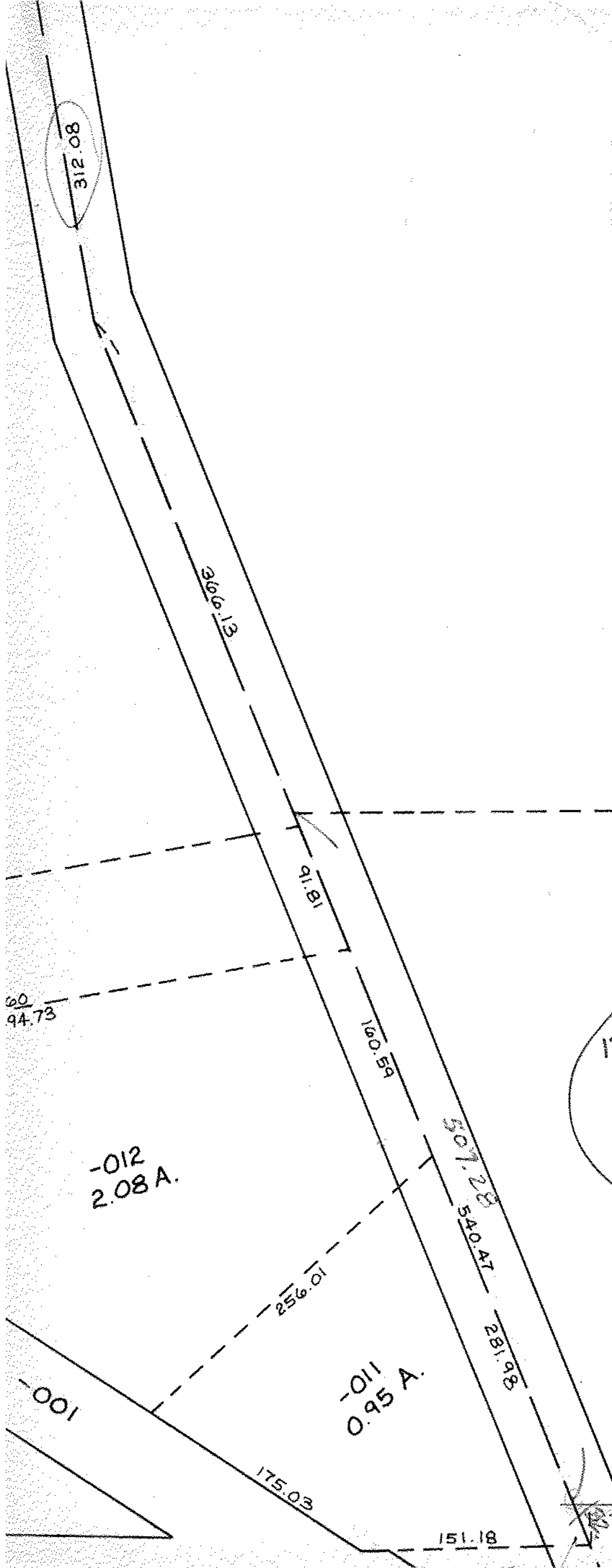
S 88°31' W

776/654 #2
CL 1: 1159
0.22 A.

#16474
331.35

318.21

30



-012
2.08 A.

-011
0.95 A.

-001

489.46

514.46

175.03

151.18