

TOP LINE ~~100~~  
445

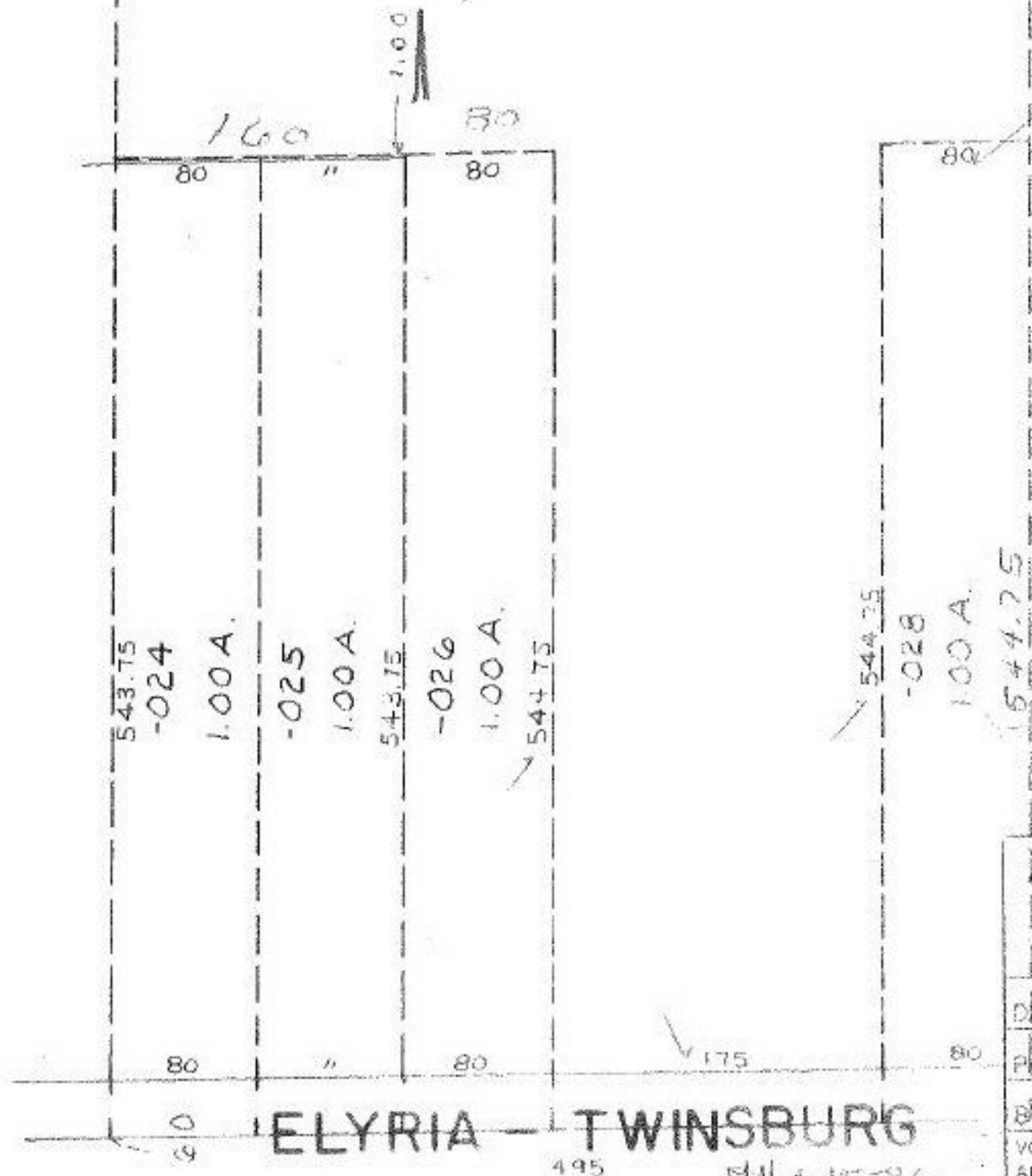
512.23  
512.25

-027  
7.85 A.  
8.00

C=11107

511.25

AC. CORR. POP. SURVY BY  
THOMAS W. LAUNTON  
CIVIL ENGR. SURVEYOR.



-030  
1.02 A.

544.25  
-028  
1.00 A.

544.75

#16466

APPROVED	
LORAIN CO.	
MAP DEPT.	
DATE	11-15-85
PAGE	2-00-016
BY	C. Francis
VOID AFTER	

1 of 2  
BOTTOM PT.

495  
SH 4-15-86