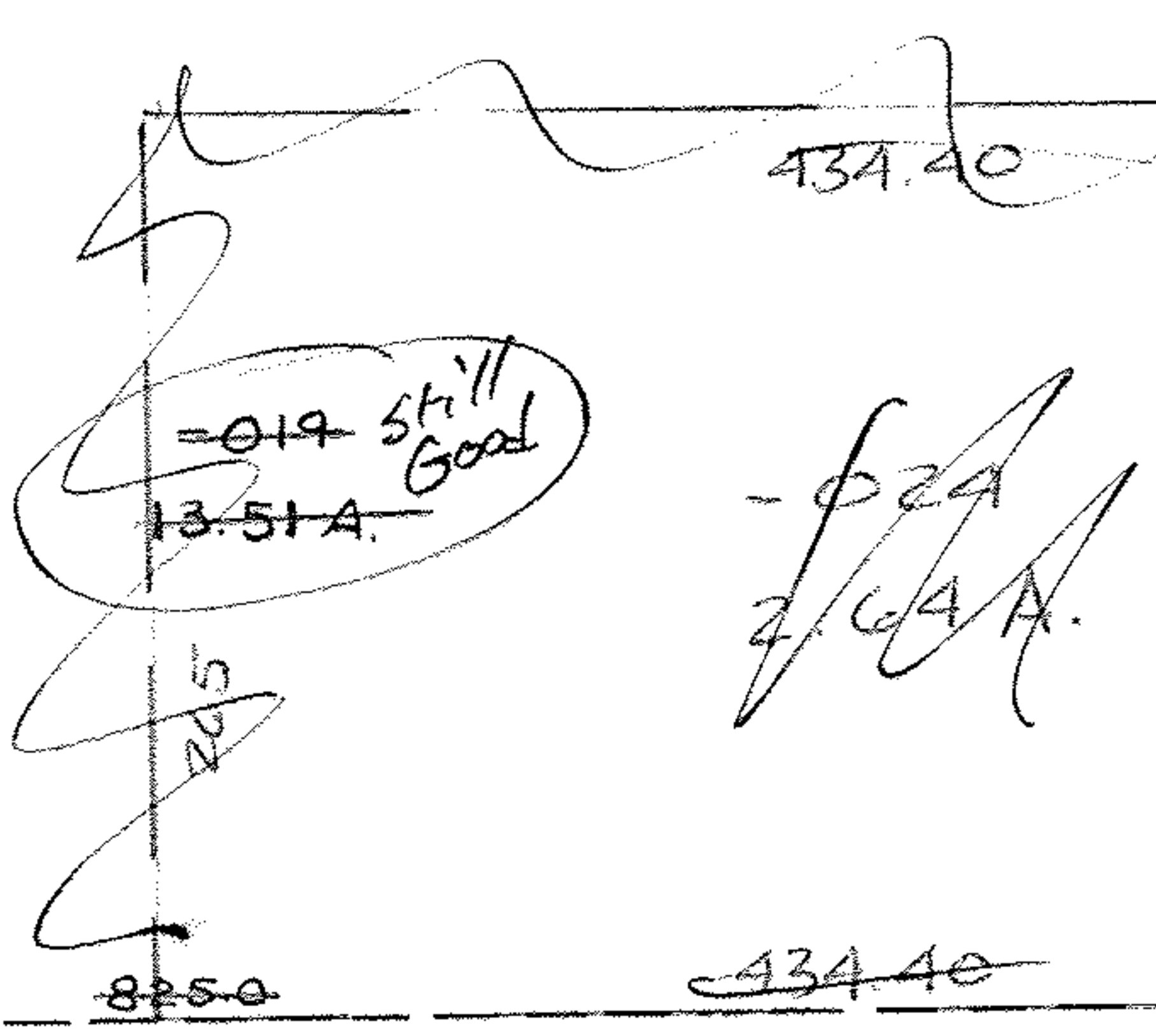


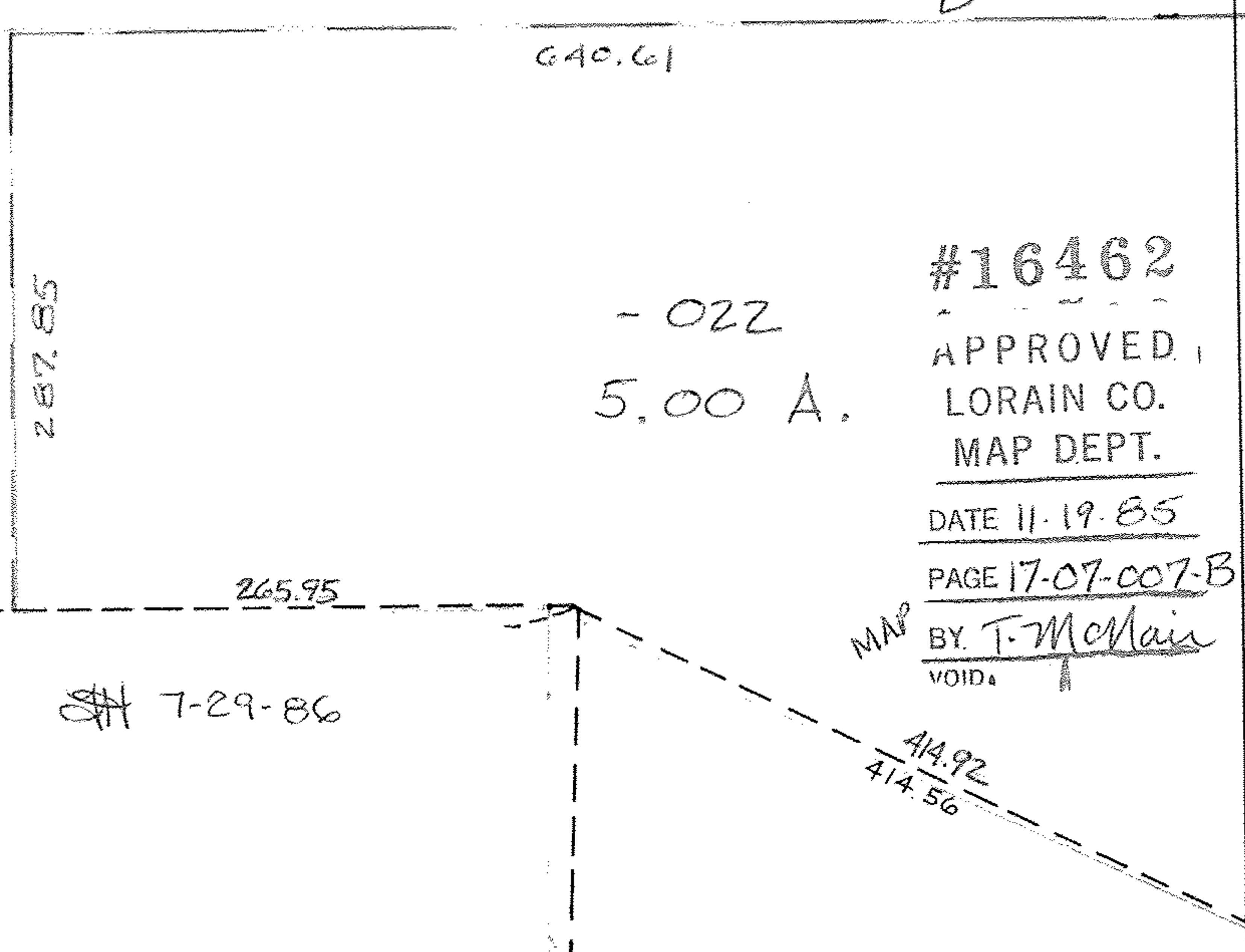
~~F-025~~
 10.87 A SPLIT
 THIS VOID
 NOID



#16462
 APPROVED
 LORAIN CO. MAP DEPT.
 DATE 11-19-85
 PAGE 17-07-007-B
 MAP BY T. McMain
 VOID METER

~~-004~~
 55.25 A
 -023
 50.25 A.
 THIS GOOD.
 SPLIT

SEE SURVEY DESCRIPTION -
 MCGLINCHY & ASSOC. CL. 1:500,000



#16462
 APPROVED
 LORAIN CO. MAP DEPT.
 DATE 11-19-85
 PAGE 17-07-007-B
 MAP BY T. McMain
 VOID METER

2322.85
 TO CL SR 18
 1145.85 FT. TO INT. W/ 4
 SR 18 (GOING SOUTH FROM
 511
 17-008-A