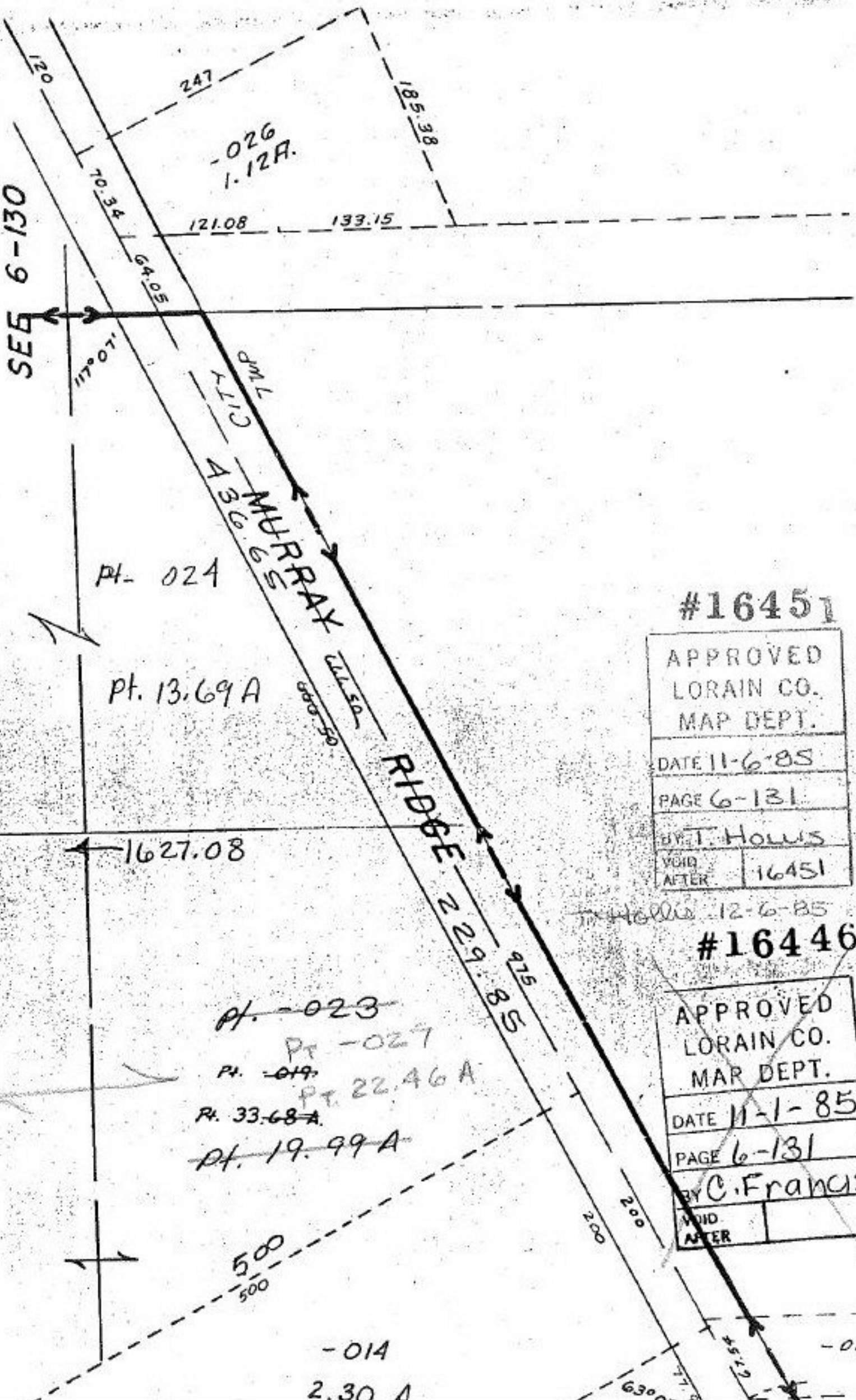


SEE 6-130



#16451

APPROVED	
LORAIN CO.	
MAP DEPT.	
DATE 11-6-85	
PAGE 6-131	
BY T. Howls	
VOID	16451
AFTER	

T. Howls 12-6-85

#16446

APPROVED	
LORAIN CO.	
MAP DEPT.	
DATE 11-1-85	
PAGE 6-131	
BY C. Francis	
VOID	
AFTER	

~~Pt. -023~~
 Pt. -027
~~Pt. -019~~
 Pt. 22.46A
~~Pt. 33.68A~~
~~Pt. 19.99A~~

-014
2.30 A

-012