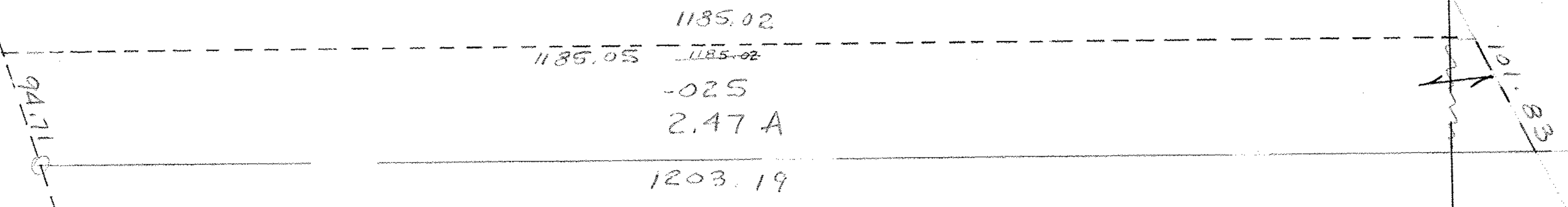
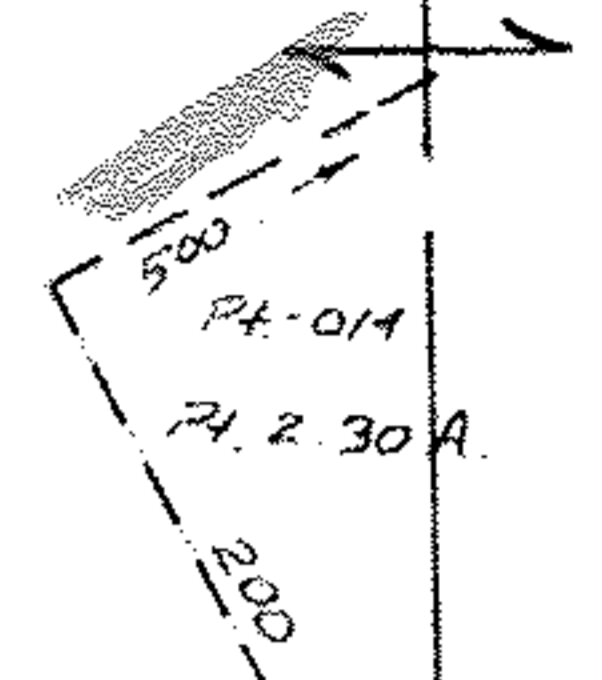


~~94/11/90~~
~~4/10/70~~

6

Pt. - 019
Pt. 33.68 A.



~~Pt. - 018~~
~~Pt. 22.72 A.~~

Pt. - 026
Pt. 20.25 A

#16446

APPROVED	
LORAIN CO.	
MAP DEPT.	
DATE 11-1-85	
PAGE 6-130	
BY C. FRANCIS	
VOID	
AFTER	

T. Holley Corp. Line 3
12-6-85 Twp.

City Ord No. 70-134 9-8-70

1092.21

10-A

SEE 10-B