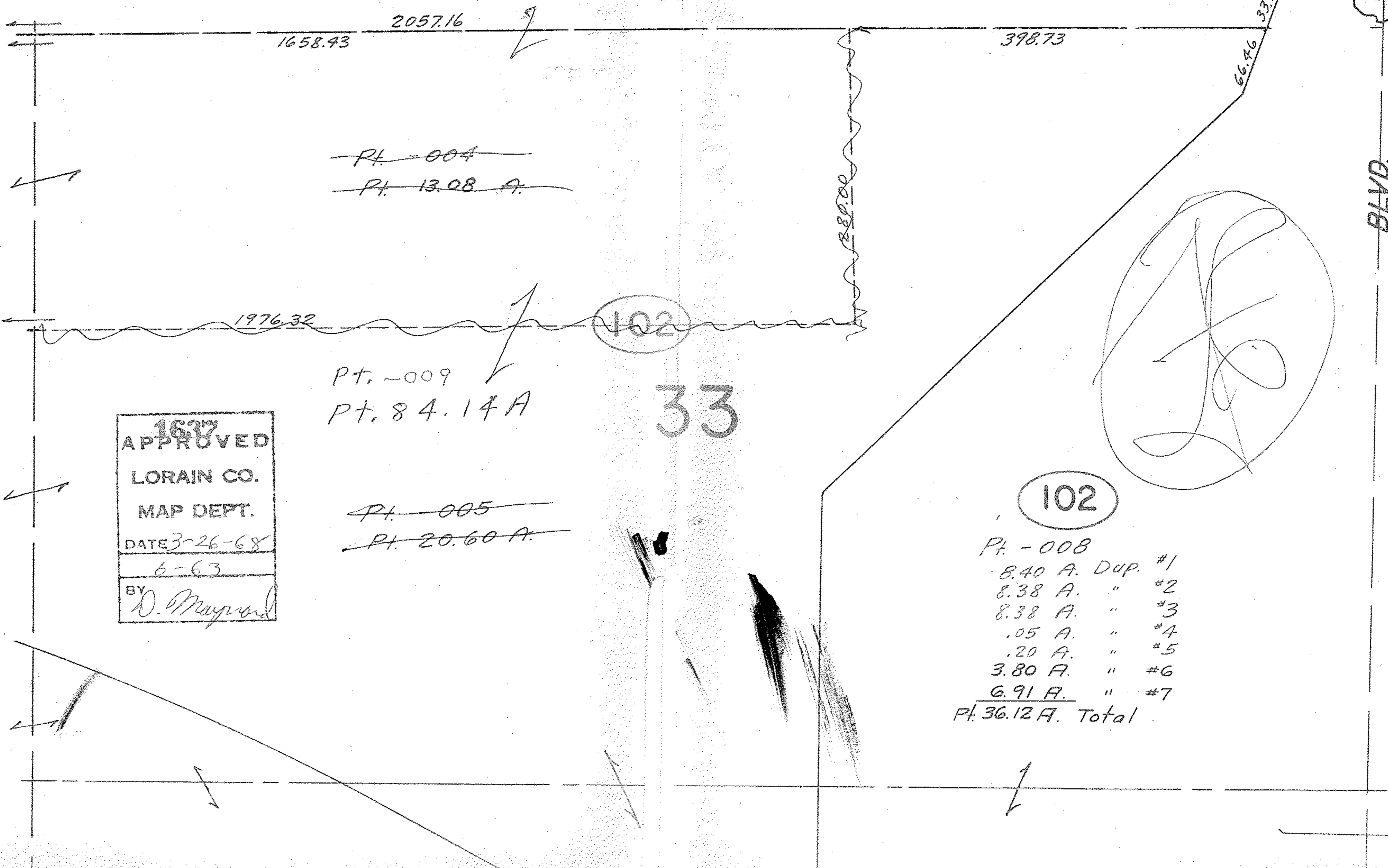


777-543  
780-487



1658.43

2057.16

398.73

66.46  
33.1

~~Pt. -004~~

~~Pt. 13.08 A.~~

1976.32

102

Pt. -009

Pt. 84.14 A

33

1637  
APPROVED  
LORAIN CO.  
MAP DEPT.  
DATE 3-26-68  
6-63  
BY  
D. Maynard

~~Pt. -005~~

~~Pt. 20.60 A.~~

102

Pt. -008  
8.40 A. Dup. #1  
8.38 A. " #2  
8.38 A. " #3  
.05 A. " #4  
.20 A. " #5  
3.80 A. " #6  
6.91 A. " #7  
Pt. 36.12 A. Total

BLVD.