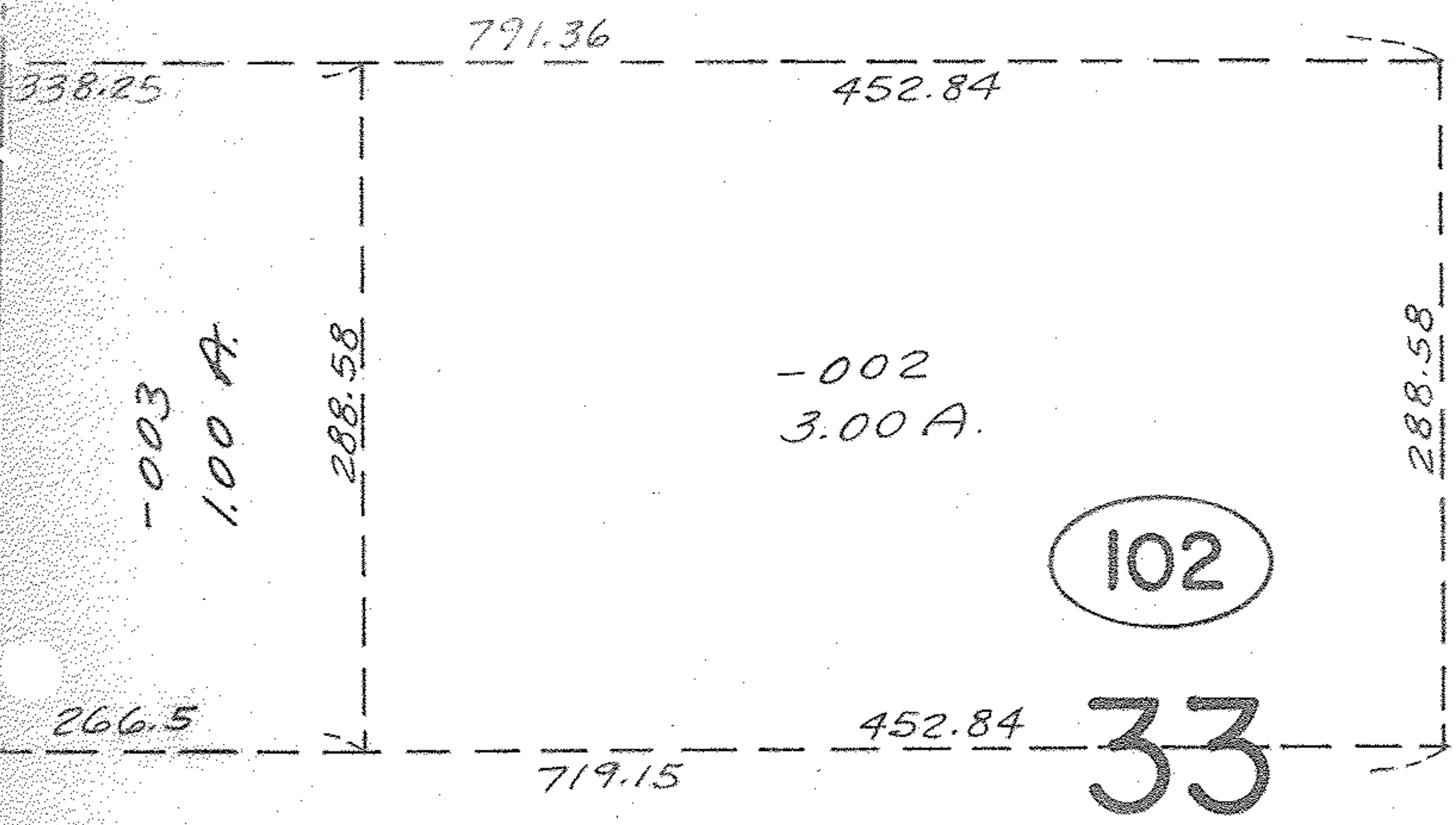


2783.53

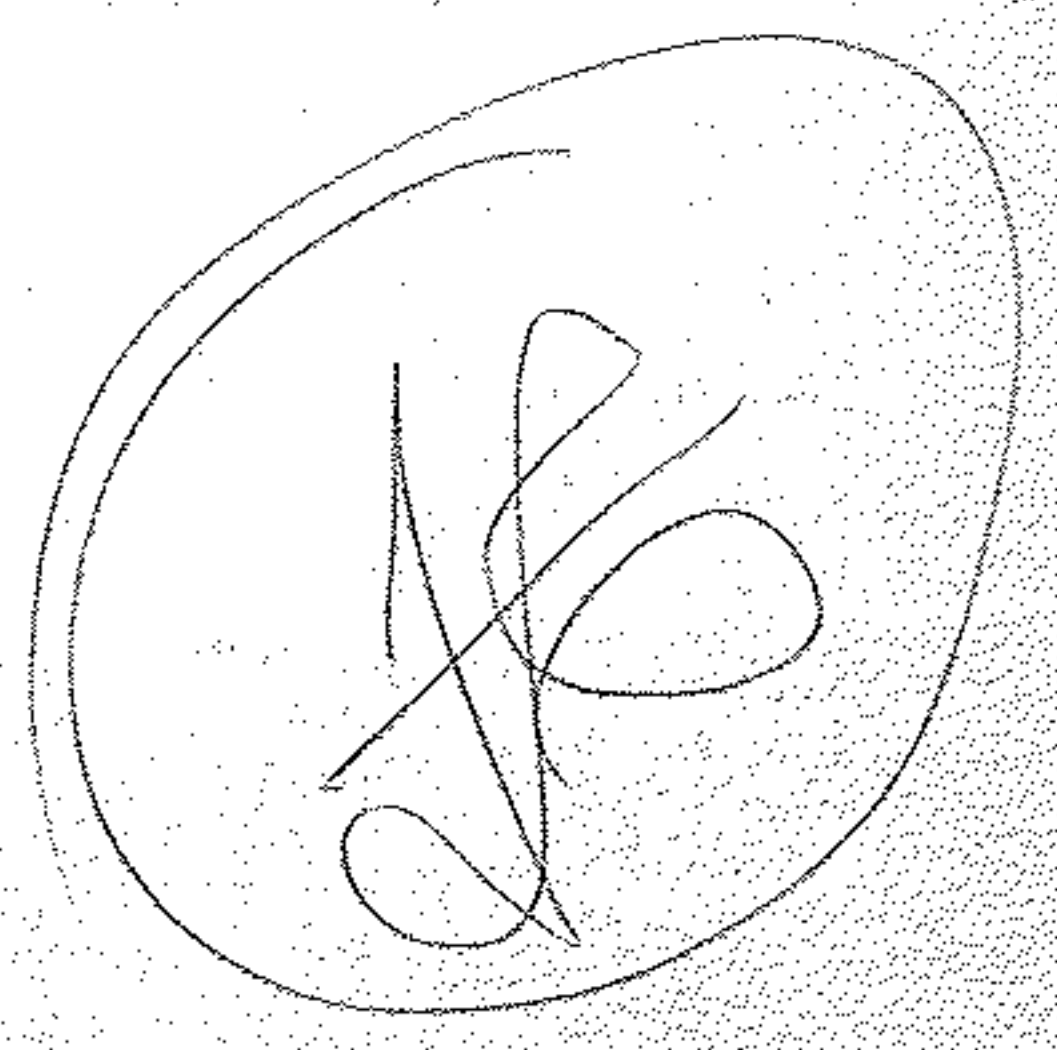
06-24-033-102



~~Pt. 001~~
~~26.16 A. Dup. #1~~
~~19.15 A. Dup. #2~~
~~3.06 A. Dup. #3~~
~~48.35 A. Total Dup.~~
~~54.56 A. Deed~~

Pt. -009
 Pt. 84.14 A.

1637
 APPROVED
 LORAIN CO.
 MAP DEPT.
 DATE 3-26-68
 6-44
 BY
 D. Maynard



400.0

12.0

2057.16

SEE 6-62

6-44