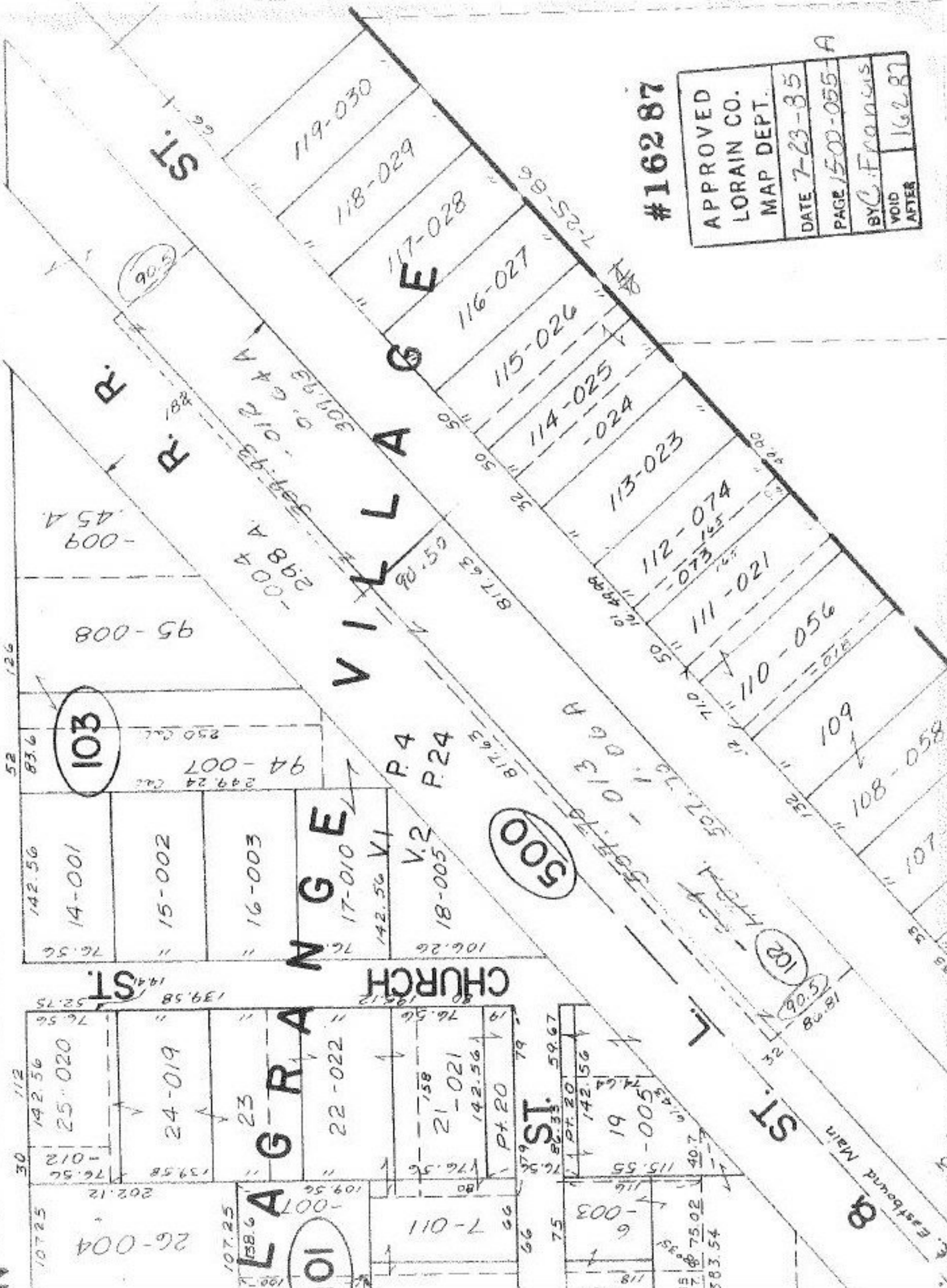


ST.

N



#16287

APPROVED	BY C. Francis
LORAIN CO.	VOID AFTER
MAP DEPT.	16287
DATE 7-23-85	
PAGE 1500-055-A	

103

500

102

VILLAGE

CHURCH ST

ST.

Eastboard Main

-009
45A

95-008

14-001

15-002

16-003

17-010

18-005

21-021

19-005

25-020

24-019

23

22-022

26-004

7-011

6-003

119-030

118-029

117-028

116-027

115-026

114-025

113-023

112-074

111-021

110-056

109

108-058

107

90.5

298 A

P.4

V.2

P.24

V.1

ST.

A

E. Eastboard Main