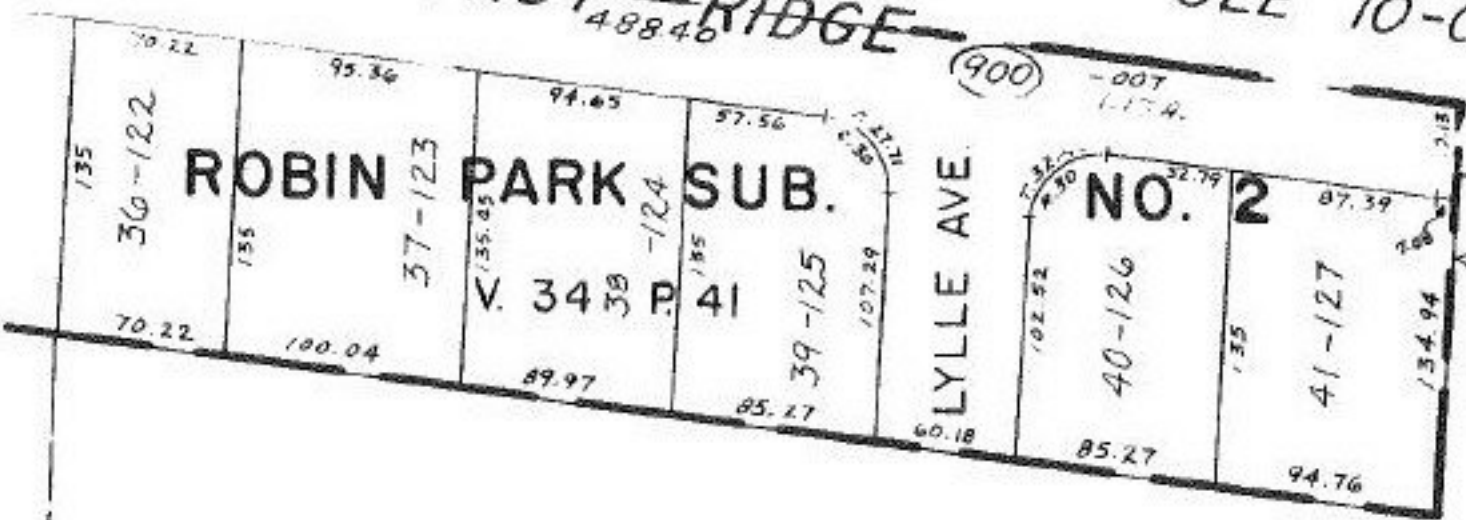


ABBEY

CHESTNUT RIDGE

SEE 10-00-005



Pt. -152
Pt. 17.19 A.

~~Pt. -128~~
~~Pt. 19.69 A.~~

~~Pt. -149~~
~~Pt. 18.17 A.~~

-053
1.53A

#16273
APPROVED
LORAIN CO.
MAP DEPT.

DATE 7.12.85

PAGE 10.00-005.6

BY T. McNamee

VOID
IFTT

PN 9-17-85