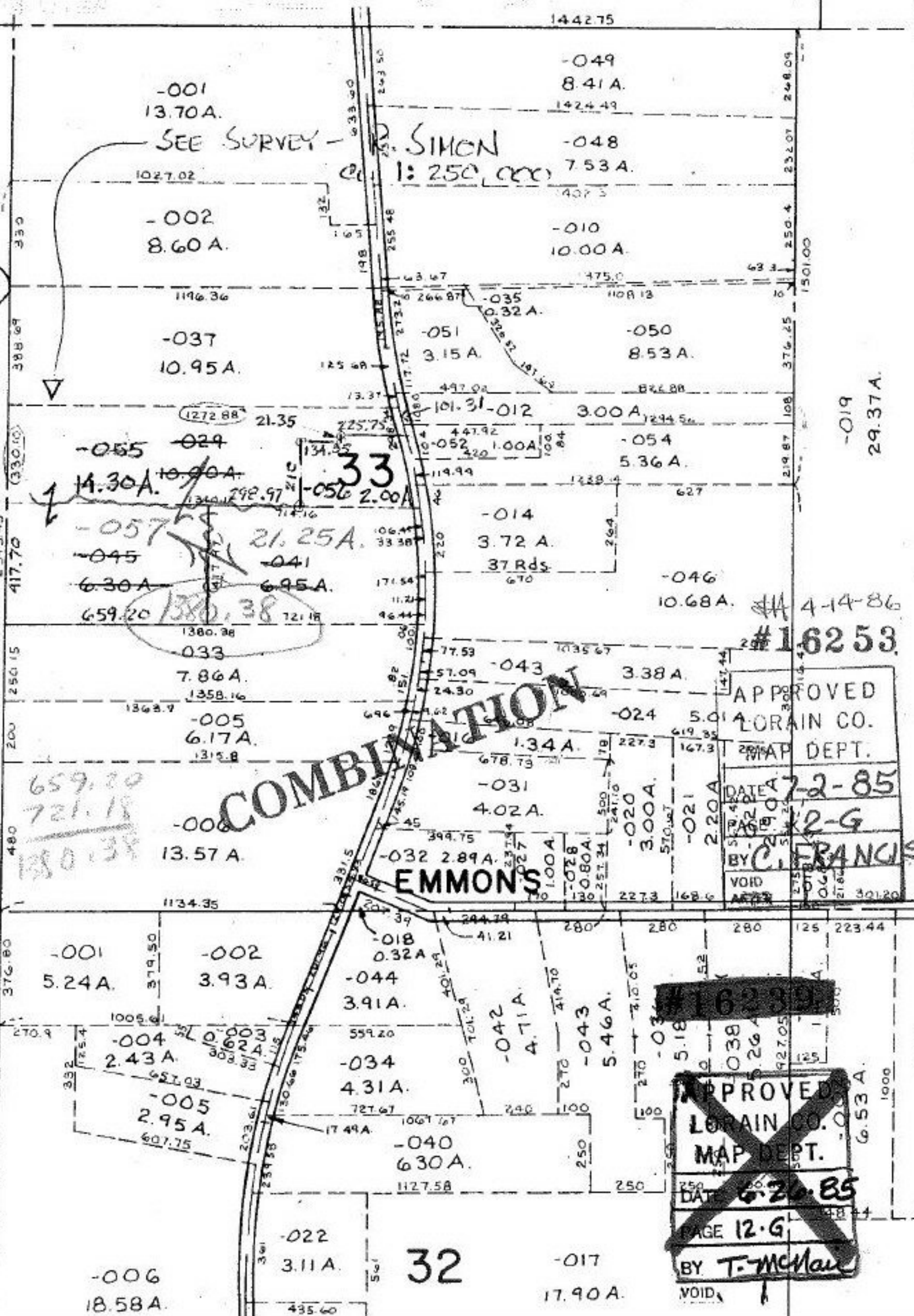


ROCKY

747.80



1442.75

-001
13.70A.

-002
8.60A.

-037
10.95A.

-055
14.30A.

-057
6.30A.

-045
6.95A.

-005
6.17A.

-006
13.57A.

-001
5.24A.

-002
3.93A.

-004
2.43A.

-005
2.95A.

-006
18.58A.

R. SIMON
1:250,000

-049
8.41A.

-048
7.53A.

-010
10.00A.

-035
0.32A.

-051
3.15A.

-050
8.53A.

-012
3.00A.

-054
5.36A.

-014
3.72A.

37 Rds.

-046
10.68A.

-043
3.38A.

-024
5.01A.

-031
4.02A.

EMMONS

-018
0.32A.

-044
3.91A.

-034
4.31A.

-040
6.30A.

-022
3.11A.

-017
17.90A.

4-14-86
#16253

APPROVED
LORAIN CO.
MAP DEPT.

DATE 7-2-85

PAGE 12-G

BY C. FRANCIS

VOID

APPROVED
LORAIN CO.
MAP DEPT.

DATE 6-20-85

PAGE 12-G

BY T. McNamee

VOID

32