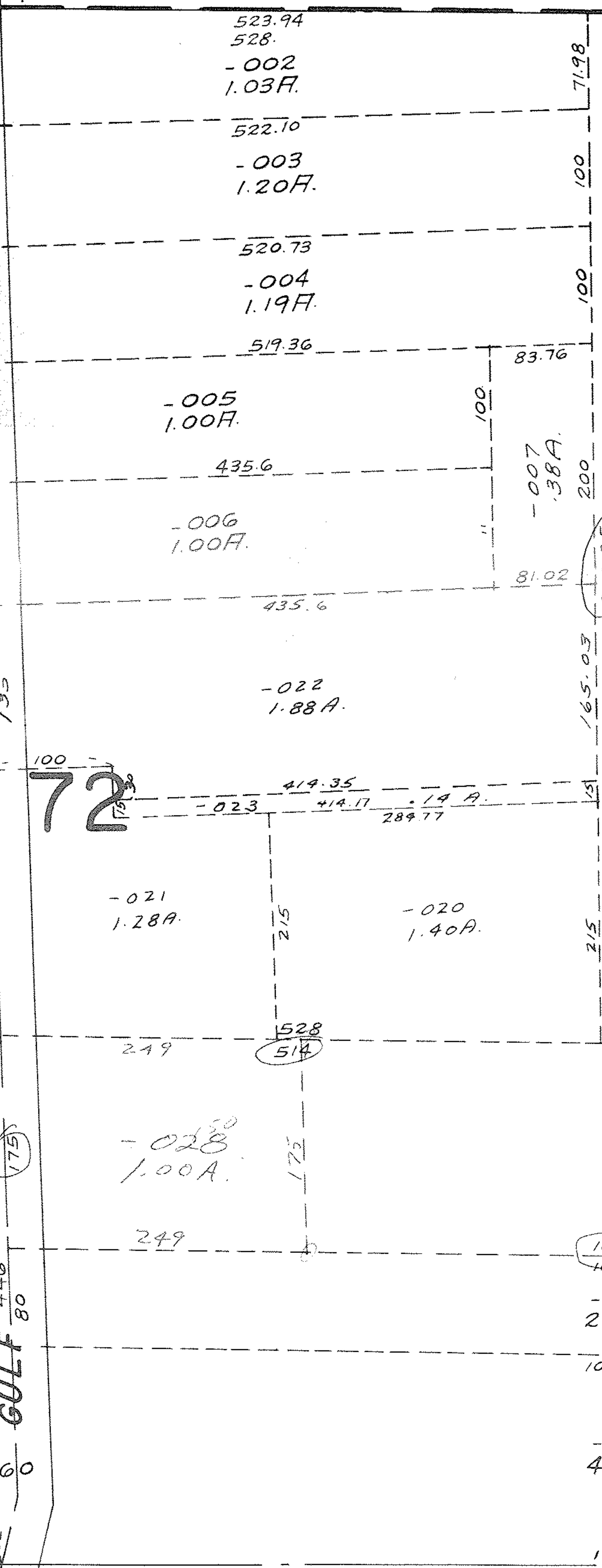


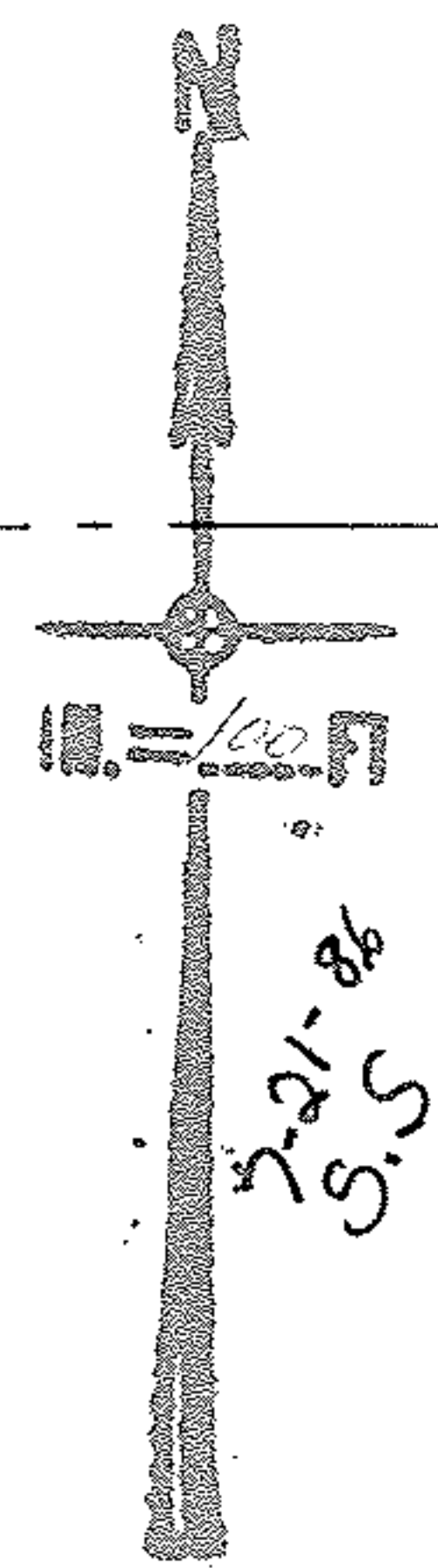
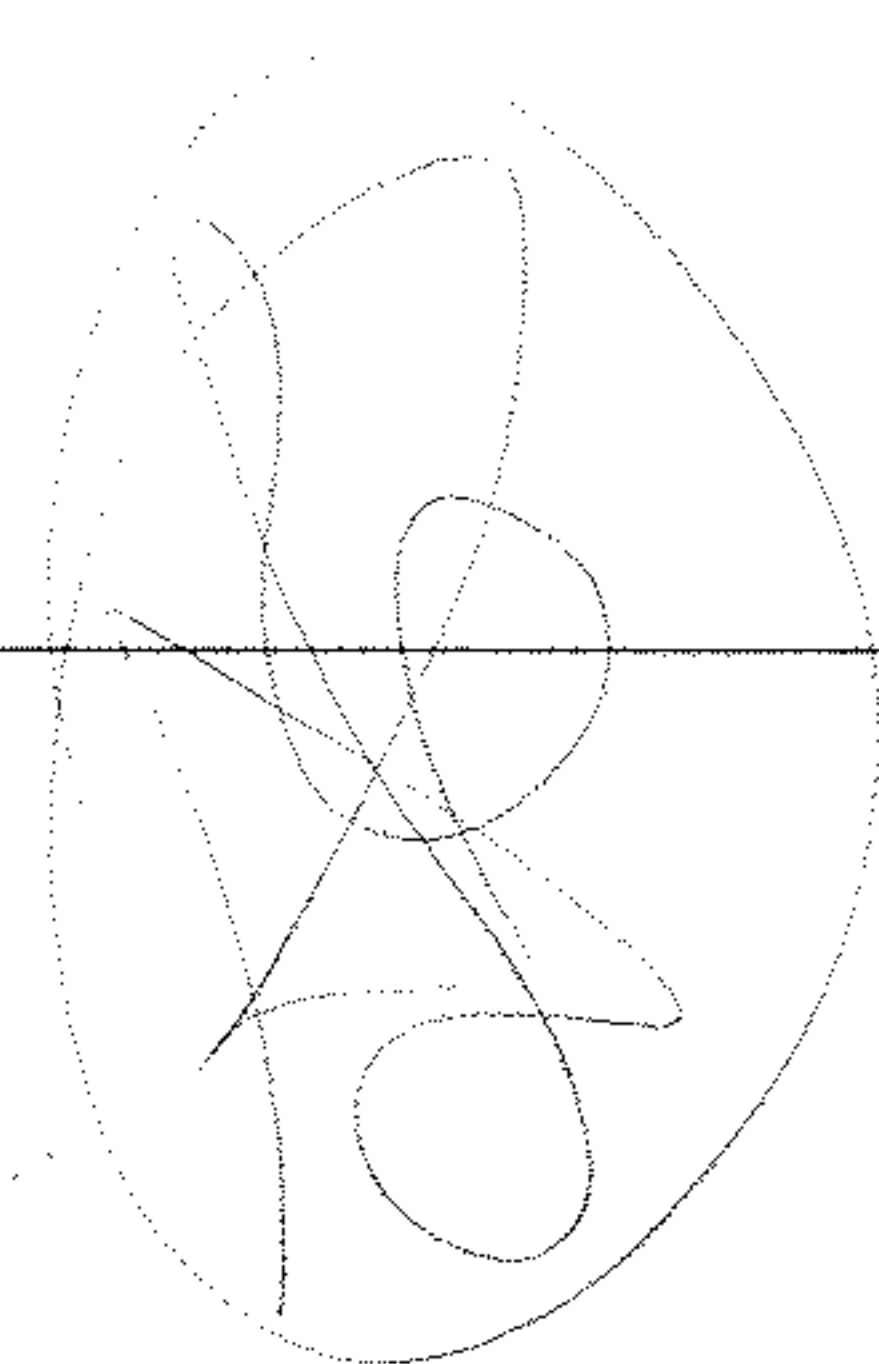
92°49' 1.64F. 530.97 311.41 311.40 30 WALNUT S. 88°47'E. AVE. 30



BROADWAY ASSEMBLY INC.
-012 11-1-65
~~16.28A~~ Deed V.917 P. 59
-029 16.18A.
15.28A.

SEE 3-00-071-B

1624



APPROVED
LORAIN CO.
MAP DEPT.
DATE 3-22-68
3-00-071-A
BY
Hollard

514
249
265

00-073-A

W. PT. LOTS 71 & 72

Done 5-4-68
L. Hollard