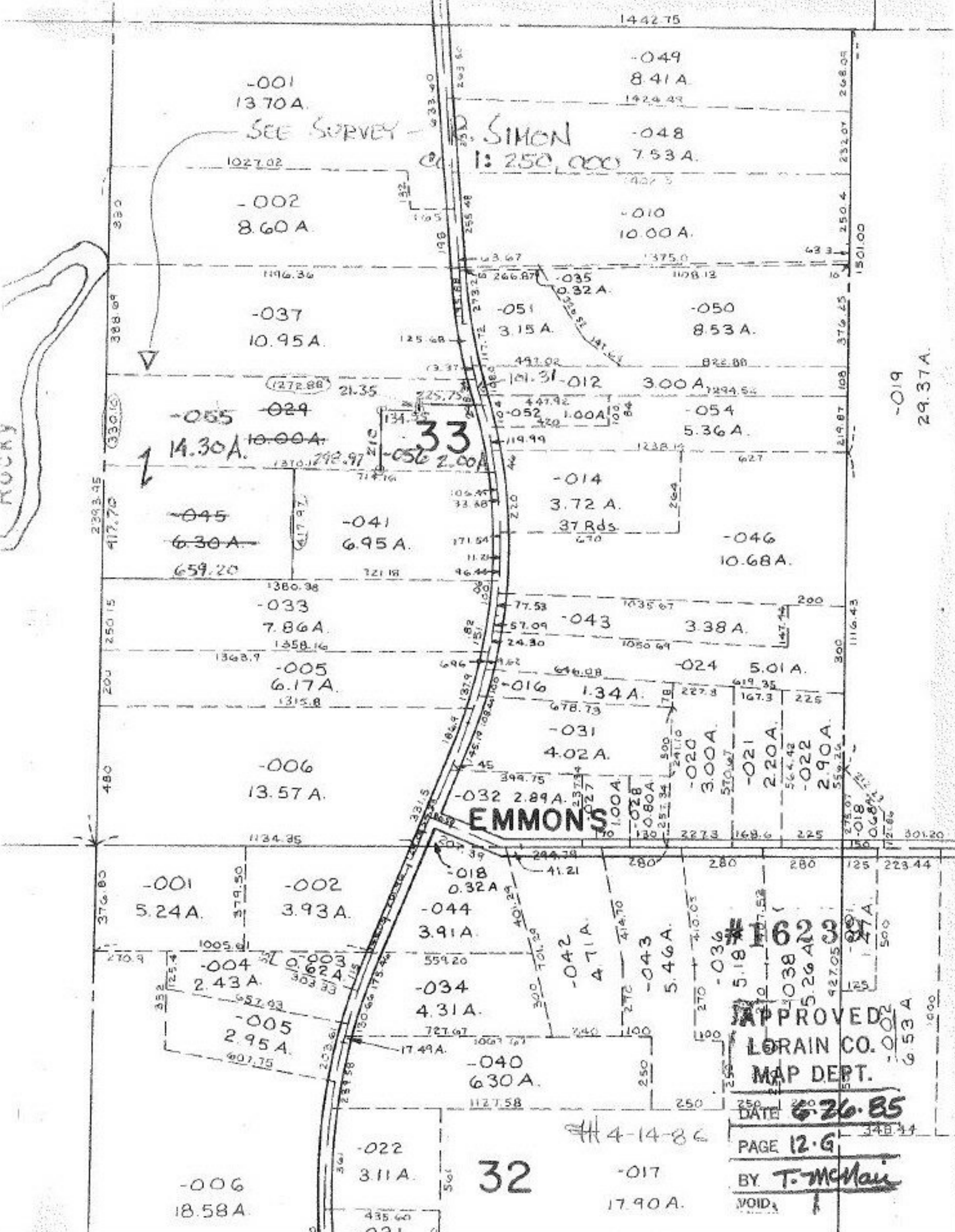


ROCKY



-001  
13.70 A.  
SEE SURVEY

R. SIMON  
1:250,000

-055  
14.30 A.  
-024  
10.00 A.

33  
-056  
2.00 A.

EMMONS

-001  
5.24 A.  
-002  
3.93 A.

-005  
2.95 A.

-006  
18.58 A.

-022  
3.11 A.

32

-017  
17.90 A.

APPROVED  
LORAIN CO.  
MAP DEPT.  
DATE 6-26-85  
PAGE 12-G  
BY T. McMan  
VOID

4-14-86

-019  
29.37 A.