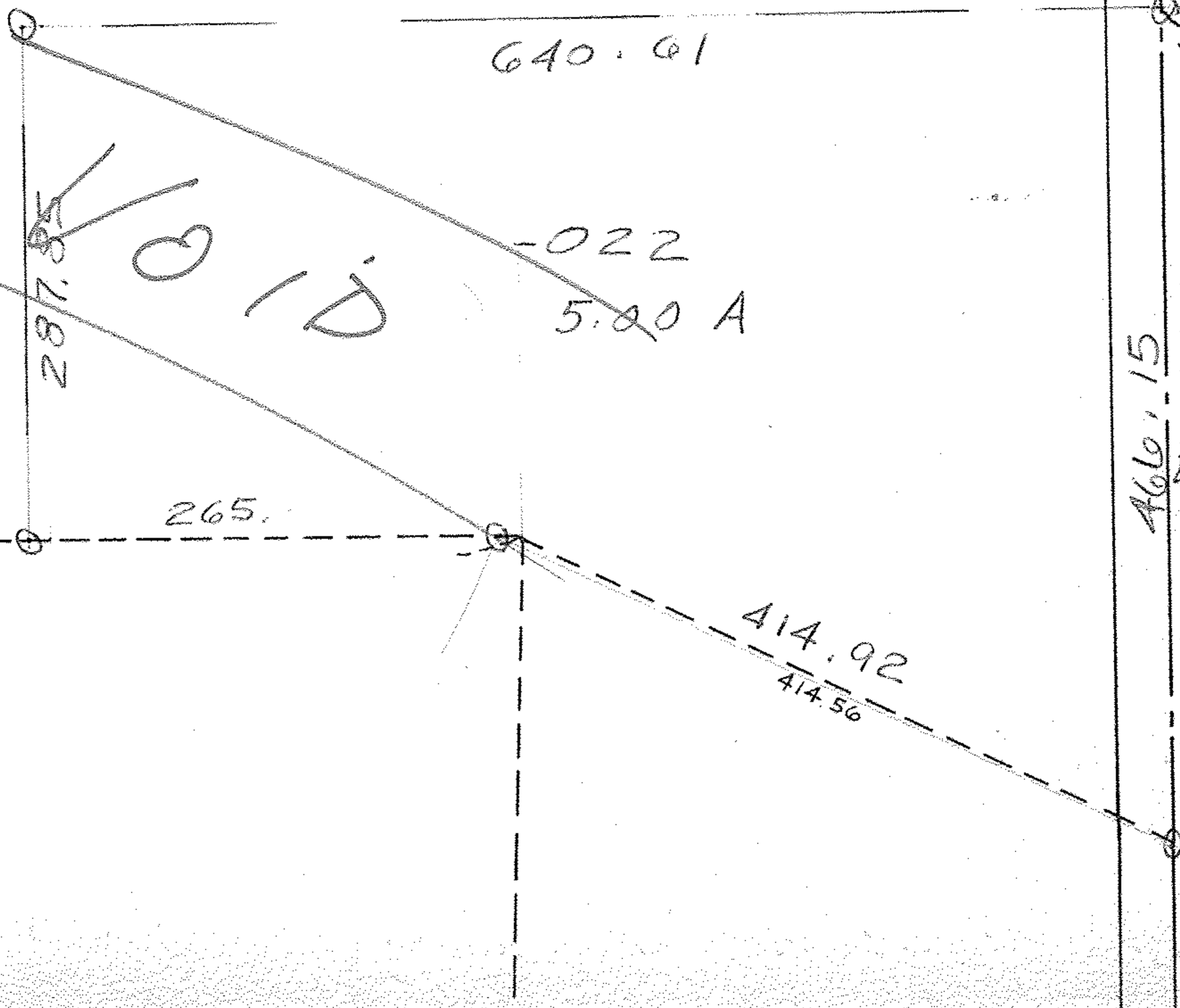


Pt. - 004
Pt. 55.25

Pt. - 023
Pt. 50.25

#16238

APPROVED	
LORAIN CO.	
MAP DEPT.	
DATE	8-9-85
PAGE	17-07-007-B
BY	C. Francis
VOID AFTER	16238



FF 17-07-008-A

460.15

EX 2

2322.85 FROM