

$\frac{23.67}{25.30}$

COMBINATION

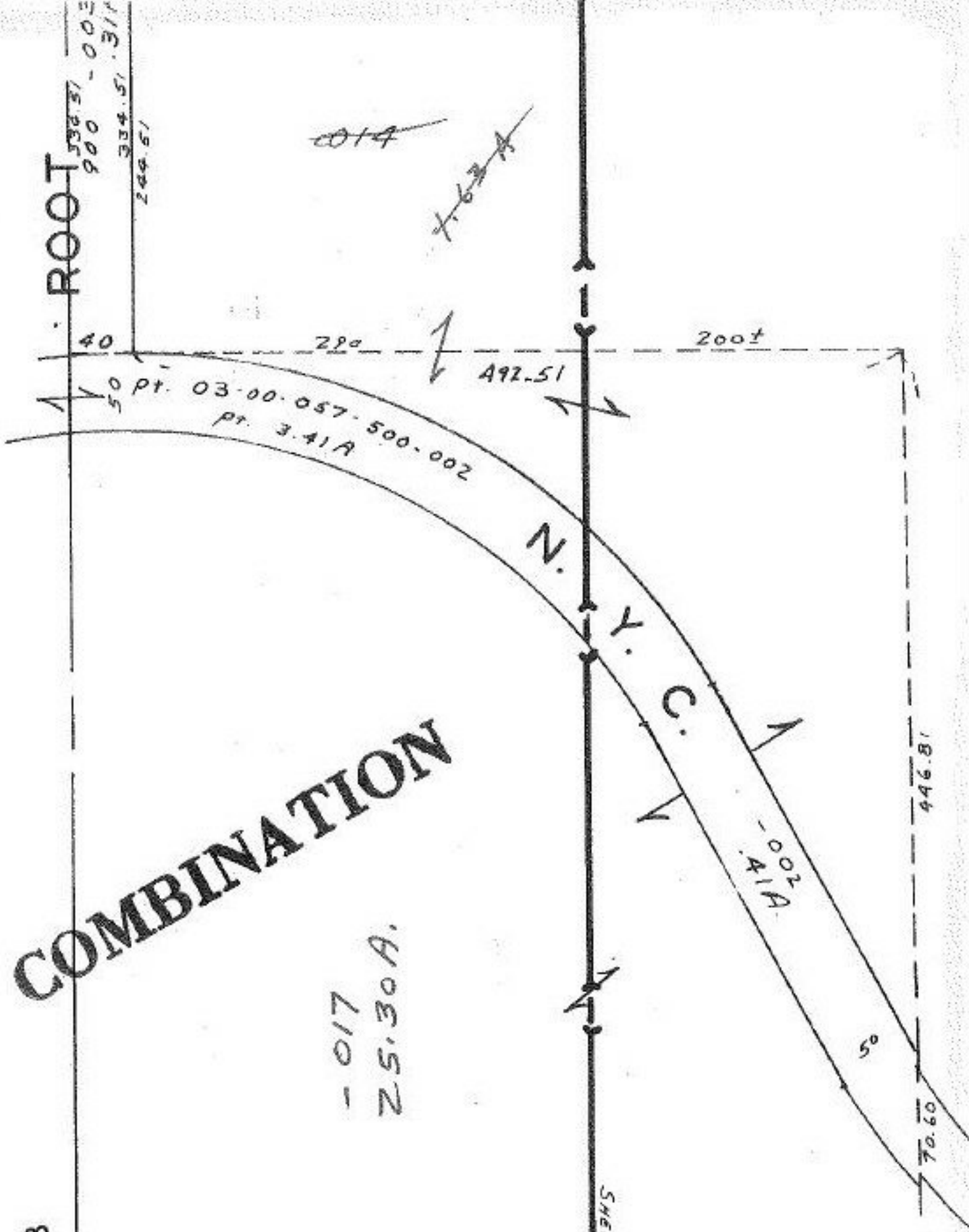
SEE 3-B

-017
25.30A.

~~007~~
~~23.67A~~

T.M.
7-29-85

SHEFFIELD VILL. CORP. LINE
LORAIN CITY MISS.



#16159
APPROVED
LORAIN CO.
MAP DEPT.
DATE 5-6-85
PAGE 300-058 B
BY *[Signature]*
VOID AFTER 5-6-85

1704.7
1452.53