

6/5/19
12/106

SEE 3-F

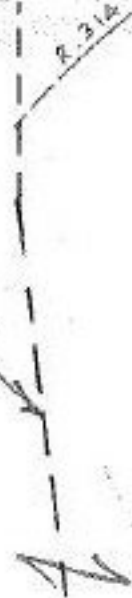
1964.44

~~PT 016~~
~~PT 577A~~

101

644.35

link
leaves in.



PT. -022
PT. 12.06A.

~~010~~
6.29A

83

COMBINATION

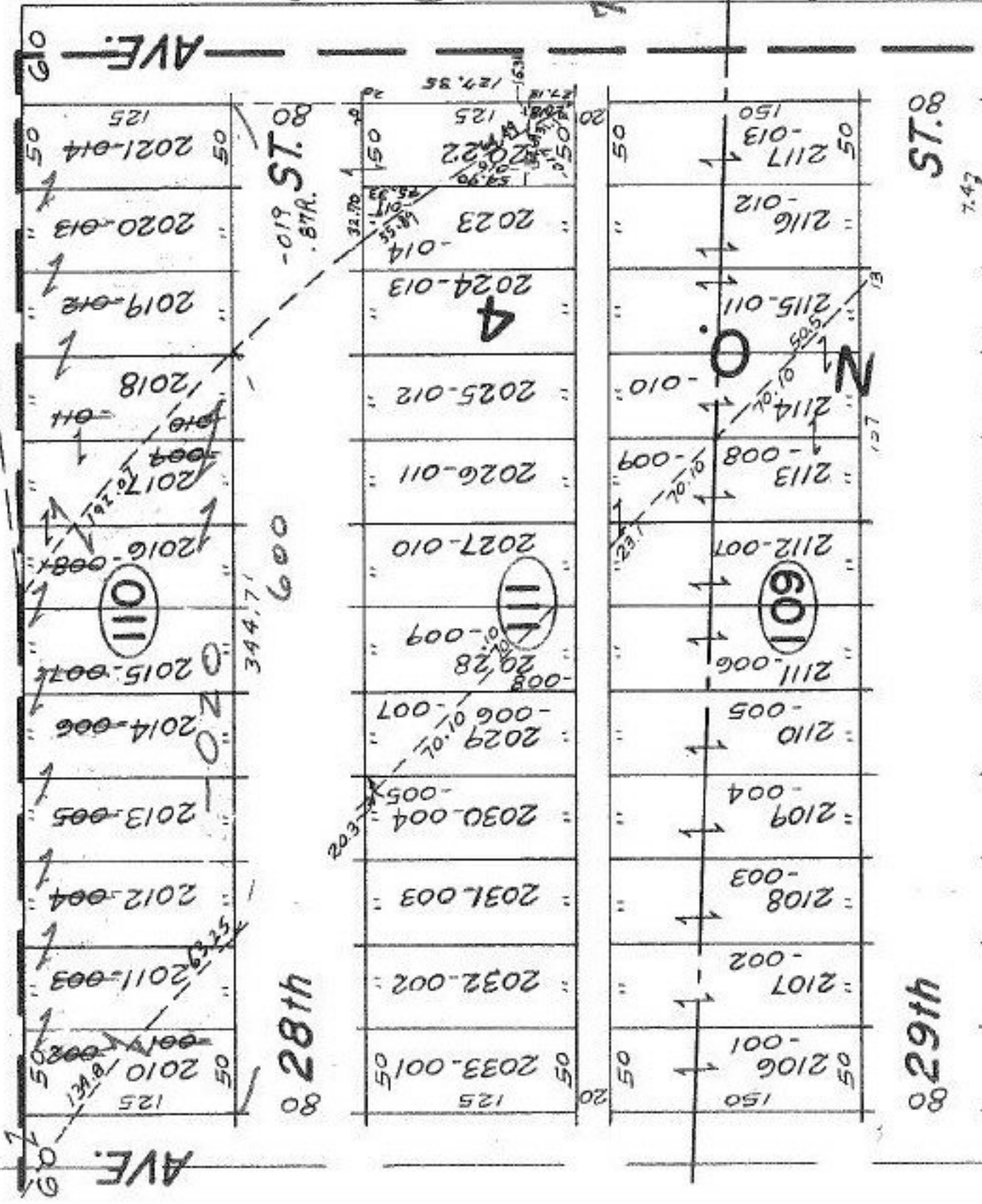
T.M.

#16153

7.31.85

APPROVED	DATE 5-6-85
LORAIN CO.	PAGE 3.00-081 B
MAP DEPT.	BY <i>[Signature]</i>
VOID AFTER	16153

101



80
29th

80
57th

7.47