

SE 85

COMBINATION

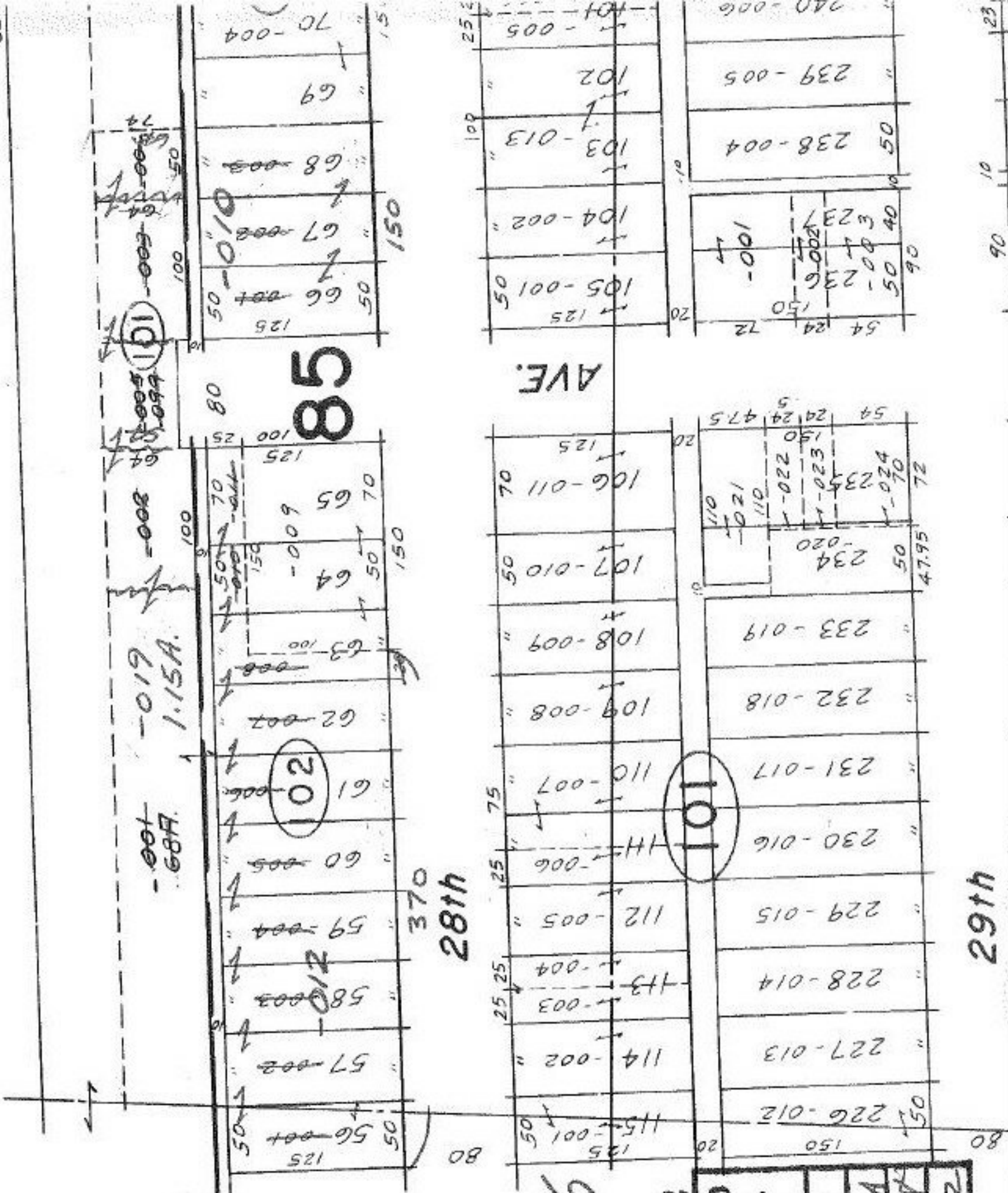
-001-68A
-019-1.15A

85

28th

29th

AVE.



#16152

APPROVED	DATE 5-6-85
LORAIN CO.	PAGE 3 00-094A
MAP DEPT.	BY <i>[Signature]</i>
VOID AFTER	1/6/52

T.M.
7.31.85