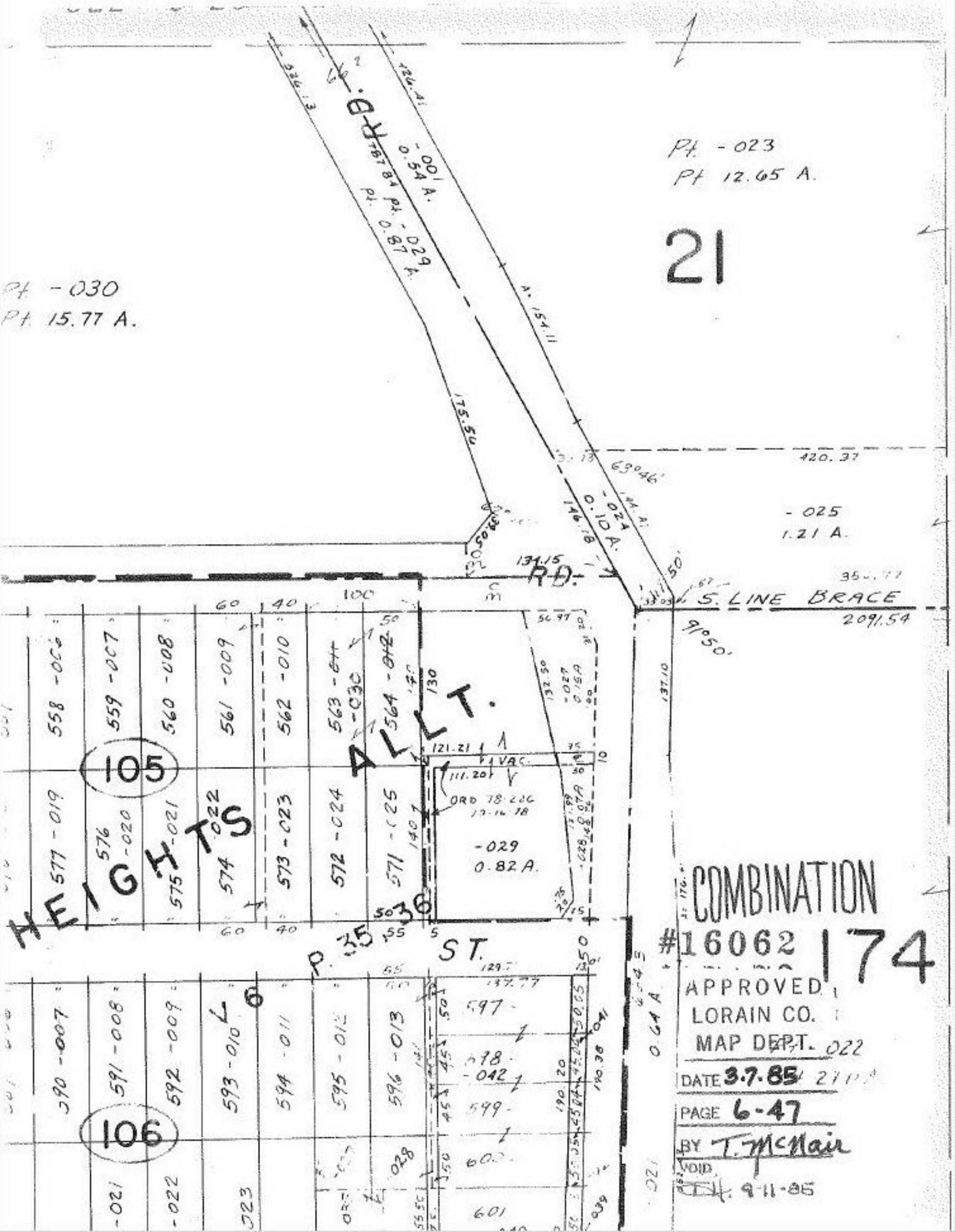


Pt - 030
Pt 15.77 A.

Pt - 023
Pt 12.65 A.

21



- 025
1.21 A.

S. LINE BRACE
2091.54

ALLOT.

ST.

COMBINATION
#16062 174

APPROVED,
LORAIN CO.
MAP DEPT. 022

DATE 3.7.85 2111

PAGE 6-47

BY T. McNamee

VOID
9-11-85