

102

Y SURVEY BY RAY E. HOCUS 582/572
cc. 170 SURVEY BY R.D. KELLER
OF RICHLAND ENGINEERING DISAGREES WITH
HOLLS INFORMATION ON 2 SIDES.

600.70

100.30
100.00
100.00
-057
0.07A

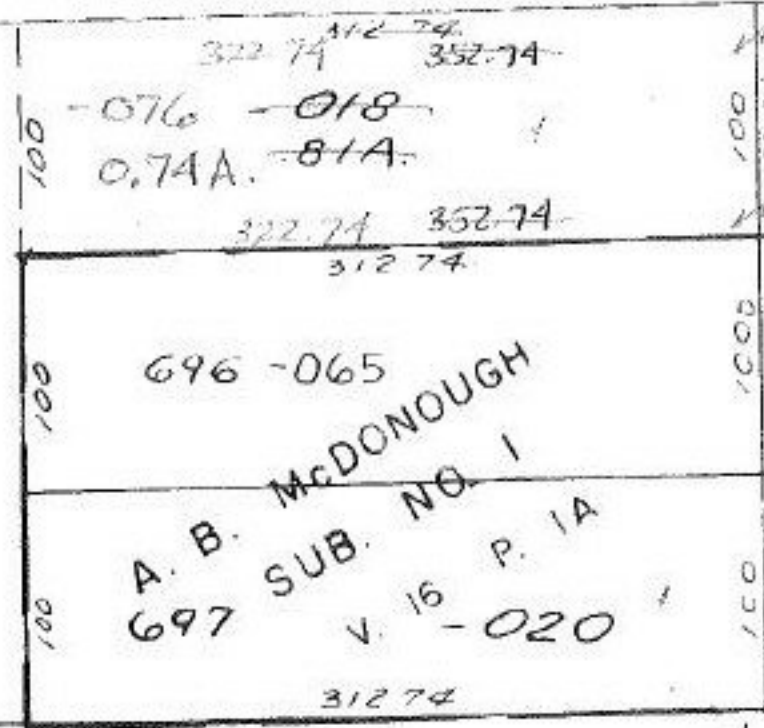
D.M. 45
-075
-070
0.07A

100.53
100.56
0.12A
0.053

SEE 4-00-017-G

526.31 TO 4 BELMONT DR
STA 10 + 87.32

CORTI



100.08
100.30
100.93
100.00
-064
0.09A

600
59.99
59.99
100.00
-055
0.04A

208.30P
208.30
208.30
208.30P

30
-066
0.14A

WON LAKE

#16041

APPROVED
LORAIN CO.
MAP DEPT.

DATE 2.25.85

PAGE 4-00-017F

BY T. McNeil

VOID
RETTA

T.H. 3/20/85

344.63

60
N

Pt. -056
Pt. 11.21A

412.74

-067
3.61A.

642.21

022
150A.