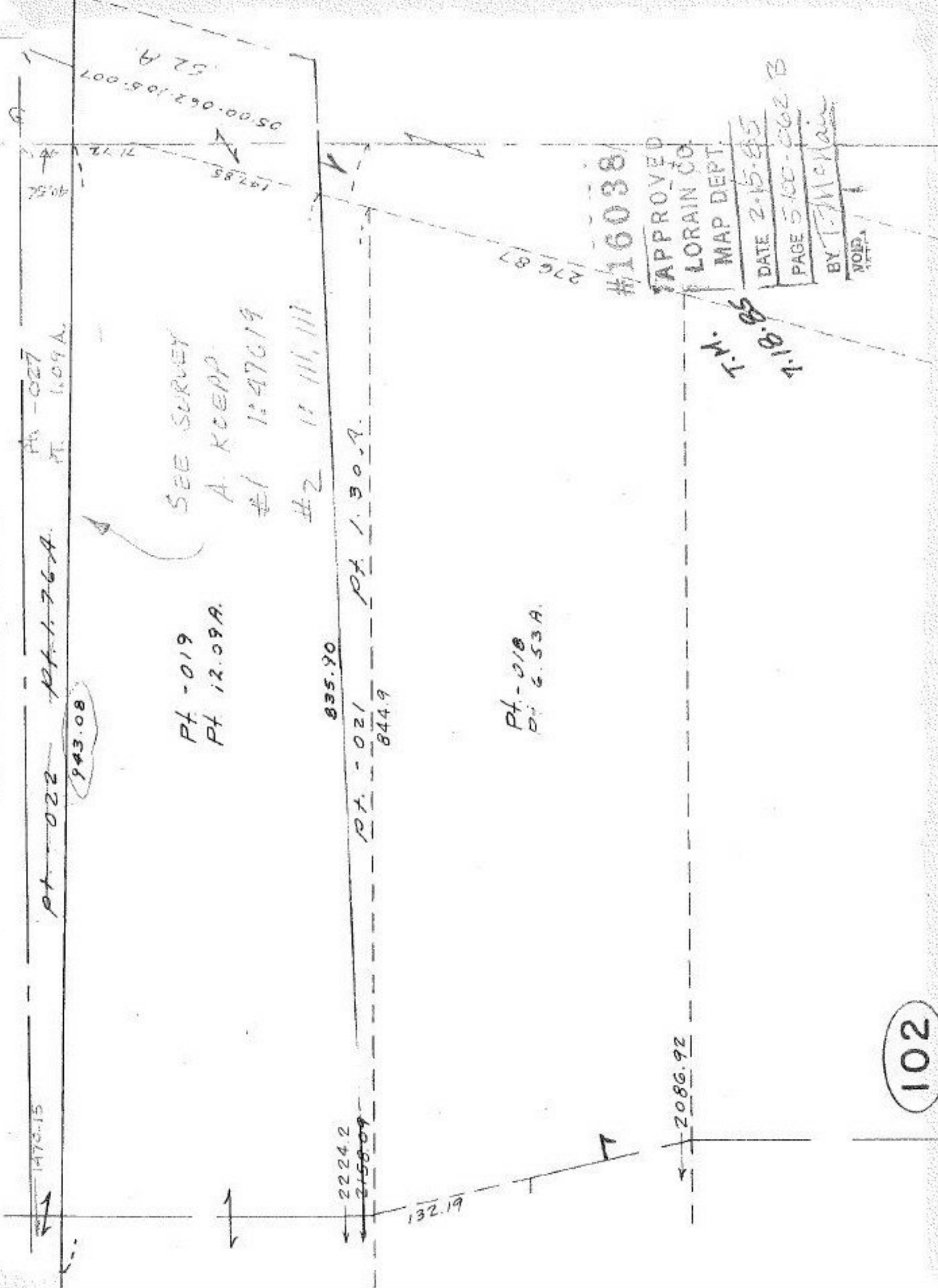


SEE 5-CU-061-B



Pt - 027
Pt 1.09A

Pt - 022 Pt 1.76A

943.08

SEE SURVEY
A. KCEPP

Pt - 019
Pt 12.09A

#1 1:47619

#2 11 111, 111

835.90

Pt 1.30A

Pt - 021

844.9

2224.2

2158.09

132.19

Pt - 018
Pt 6.53A

2086.92

#16038

APPROVED
LORAIN CO.
MAP DEPT.

DATE 2-15-85

PAGE 5-100-062-B

BY T. McMan

VOID

T.M. 85
T.B. 85

102