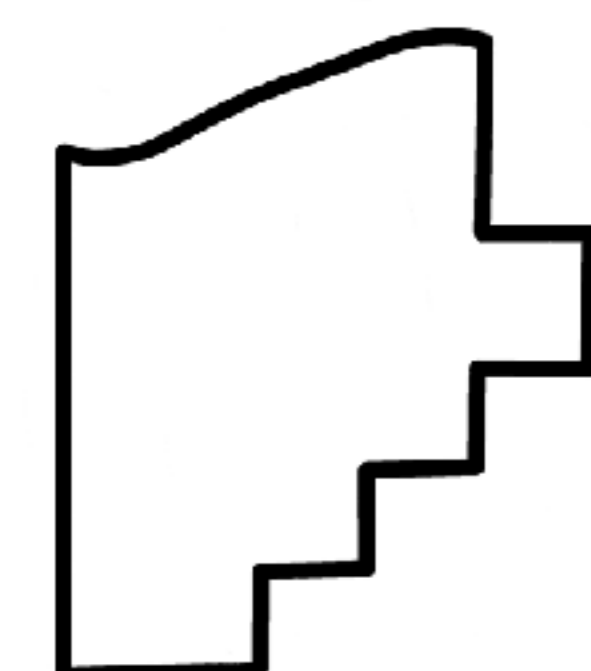
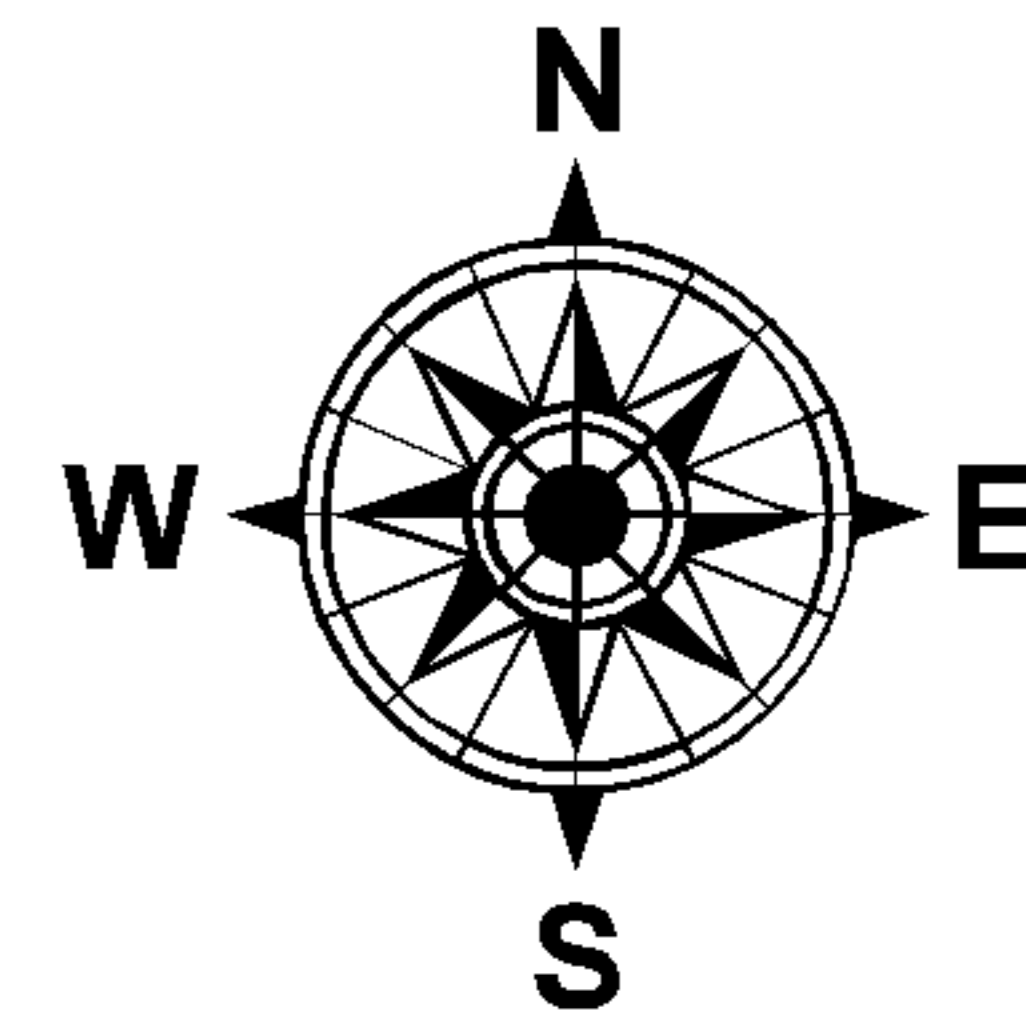
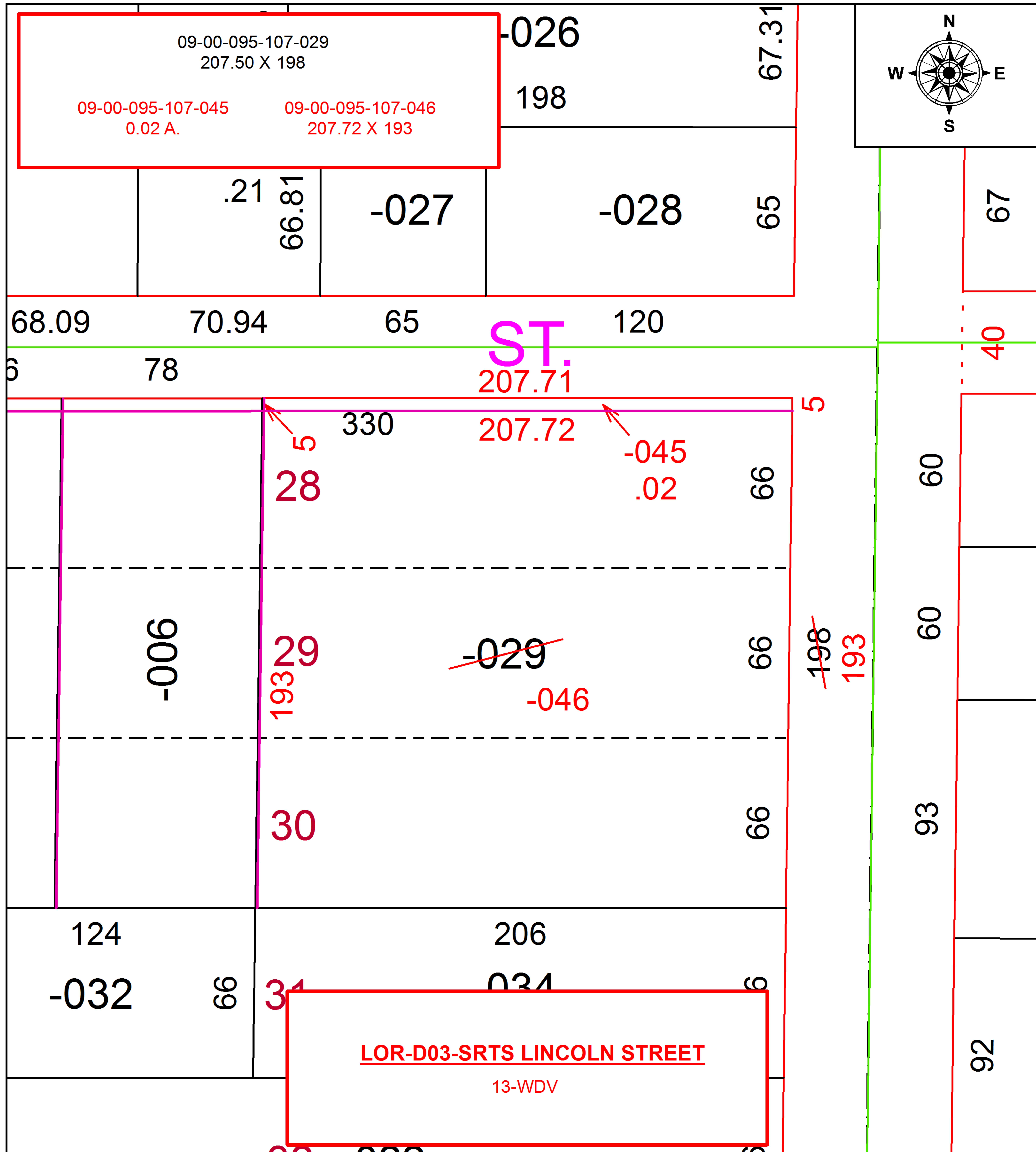


PARENT PARCEL: 09-00-095-107-029

CHILD PARCEL: 09-00-095-107-045, -046

STARTING POINT: INTERSECTION OF C/L OF LINCOLN ST. AND C/L OF S. PROFESSOR ST.

16-00752



SPLITS/DEEDS PROCESSED
 LORAIN COUNTY TAX MAP DEPARTMENT
 226 MIDDLE AVE. ELYRIA, OH

SURVEYED BY: TREVOR A. BIXLER
 CLOSURE: 1:83,746
 MAP PAGE(S): 9-00-095
 APPROVED BY: RRM DATE: 10-24-16
 SCALE: 1" = 50' PRIOR INSTRUMENT: DV 865/176