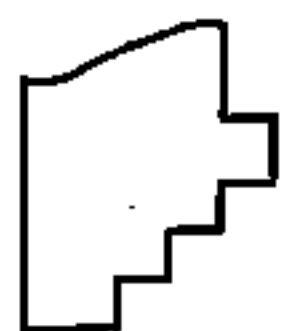
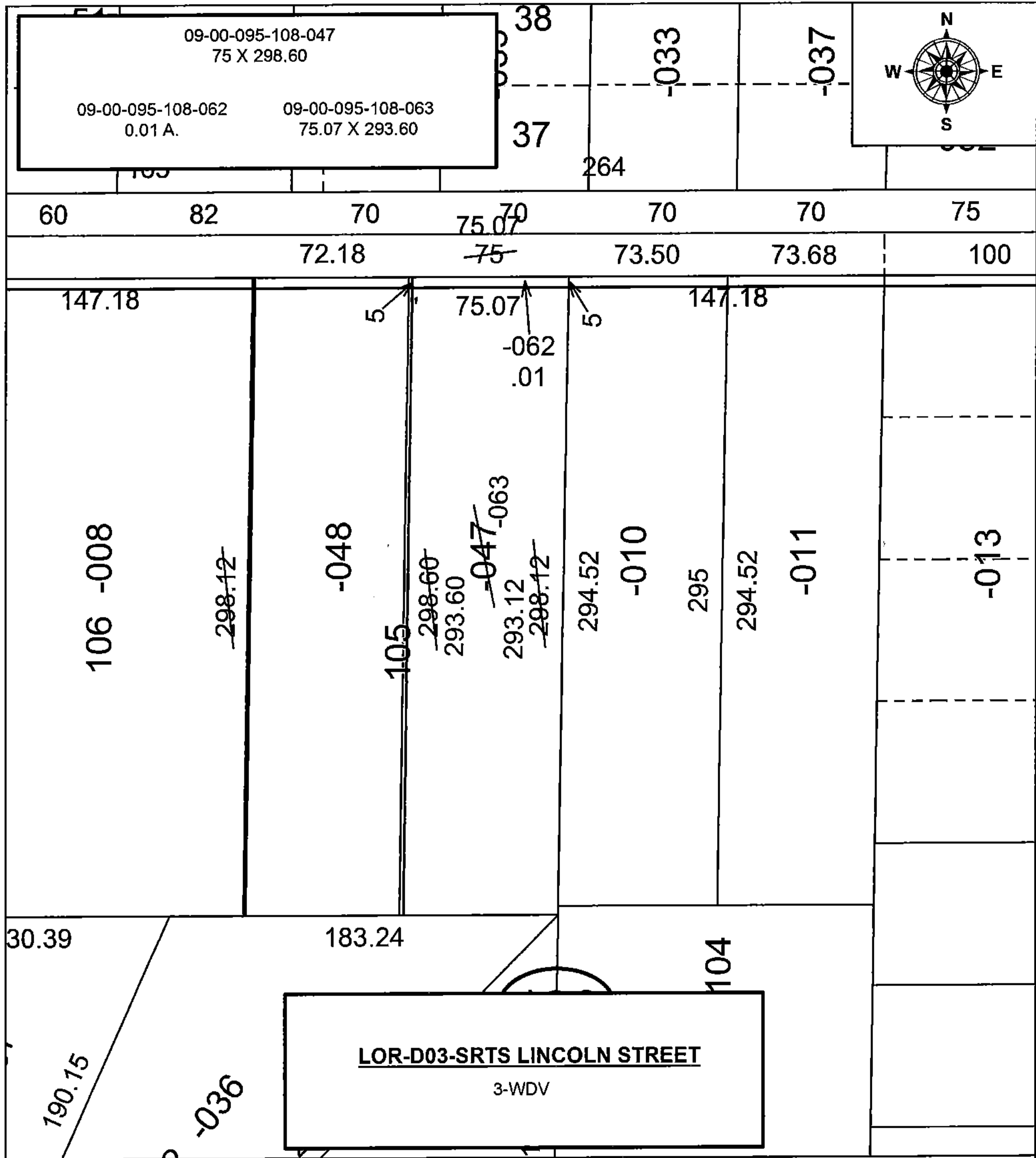


PARENT PARCEL: 09-00-095-108-047

CHILD PARCEL: 09-00-095-108-062, -063

STARTING POINT: INTERSECTION OF C/L OF LINCOLN ST. AND C/L OF S. PROFESSOR ST.

16-00742



SPLITS/DEEDS PROCESSED
LORAIN COUNTY TAX MAP DEPARTMENT
226 MIDDLE AVE. ELYRIA, OH

SURVEYED BY:	TREVORA A. BIXLER
CLOSURE:	1:2147483648
MAP PAGE(S):	9-00-095
APPROVED BY:	RRM DATE: 10-20-16
SCALE:	1" = 60
PRIOR INSTRUMENT:	DV 1283/347