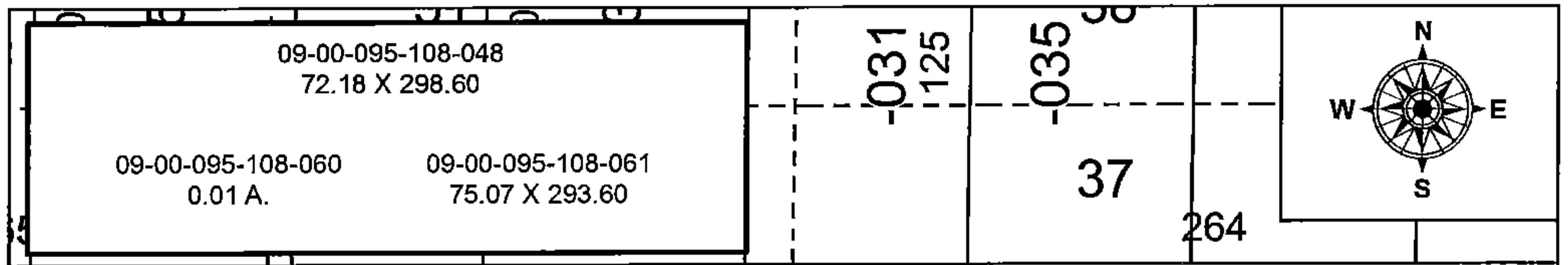


PARENT PARCEL: 09-00-095-108-048

CHILD PARCEL: 09-00-095-108-060, -061

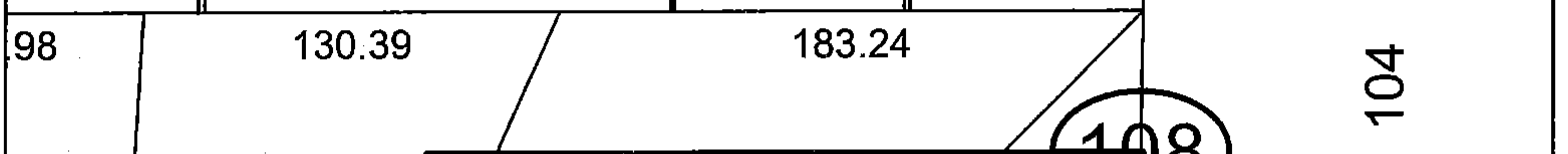
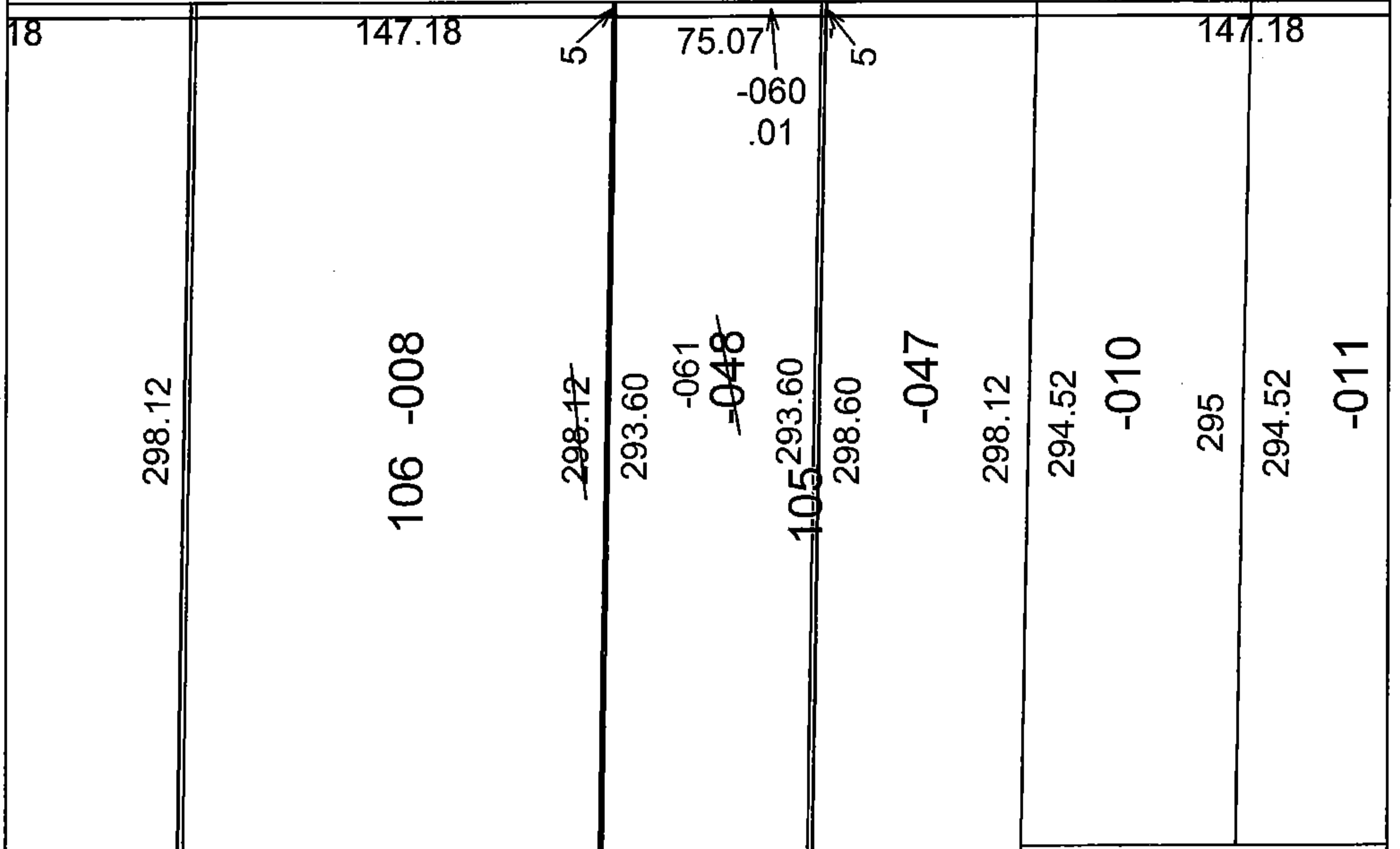
STARTING POINT: INTERSECTION OF C/L OF LINCOLN ST. AND C/L OF S. PROFESSOR ST.

16-00741

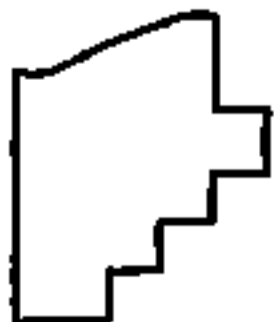


82 60 82 75.07 70 70 70 70

INCOLN ~~72.18~~ 75 73.50 73.68



LOR-D03-SRTS LINCOLN STREET
2-WDV4

 **SPLITS/DEEDS PROCESSED**
LORAIN COUNTY TAX MAP DEPARTMENT
226 MIDDLE AVE. ELYRIA, OH

SURVEYED BY: TREVOR A. BIXLER
CLOSURE: 1:2147483648
MAP PAGE(S): 9-00-095
APPROVED BY: RRM DATE: 10-20-16
SCALE: 1" = 60 PRIOR INSTRUMENT: OR 349/800