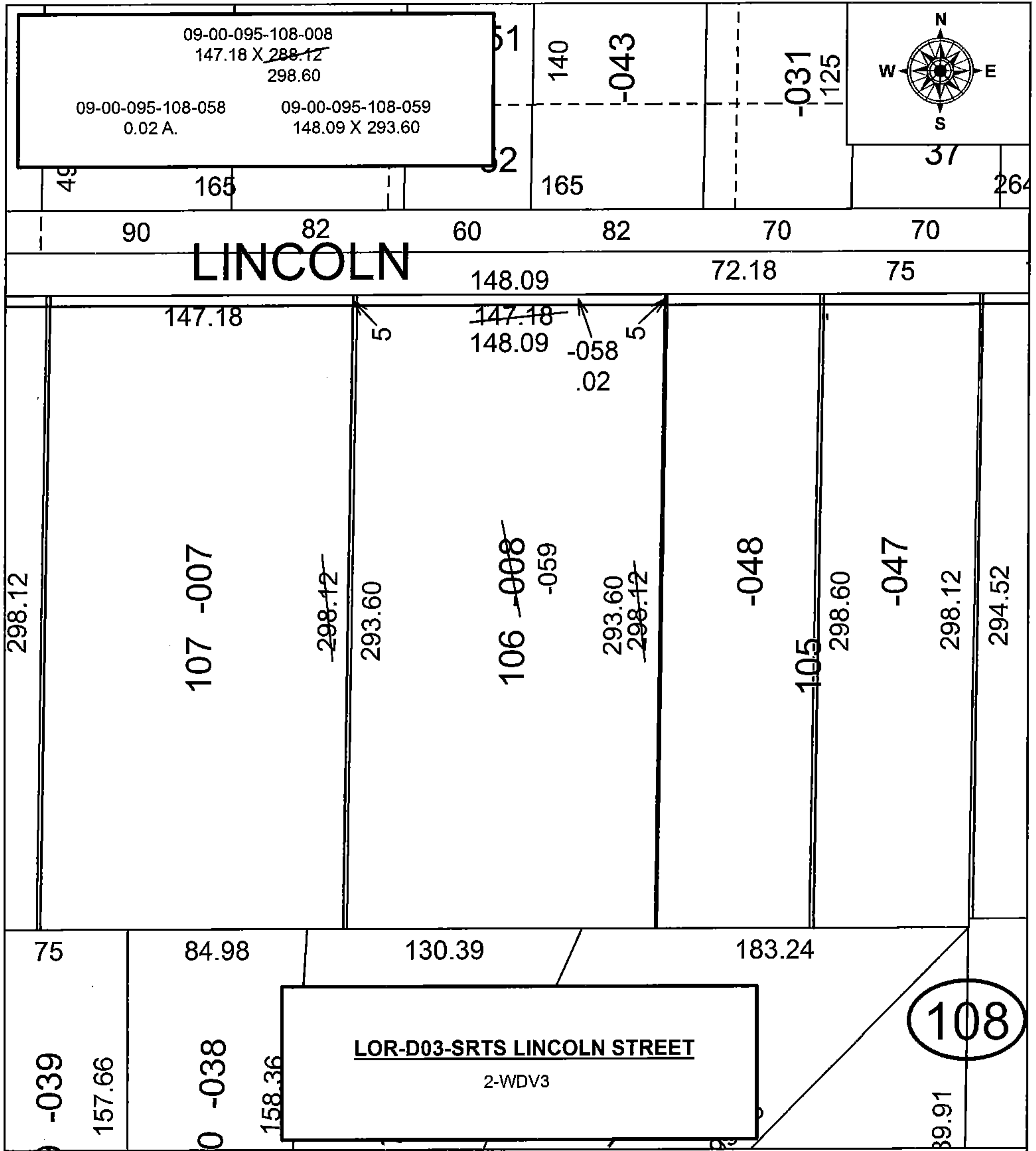


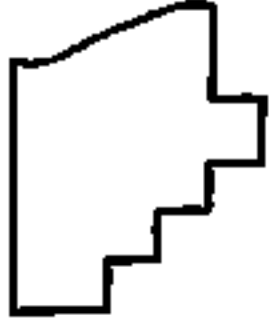
PARENT PARCEL: 09-00-095-108-008

CHILD PARCEL: 09-00-095-108-058, -059

STARTING POINT: INTERSECTION OF C/L OF LINCOLN ST. AND C/L OF S. PROFESSOR ST.

16-00740



 **SPLITS/DEEDS PROCESSED**
 LORAIN COUNTY TAX MAP DEPARTMENT
 226 MIDDLE AVE. ELYRIA, OH

SURVEYED BY: TREVOR A. BIXLER
 CLOSURE: 1:2147483648
 MAP PAGE(S): 9-00-095
 APPROVED BY: RRM DATE: 10-20-16
 SCALE: 1" = 60' PRIOR INSTRUMENT: OR 349/800