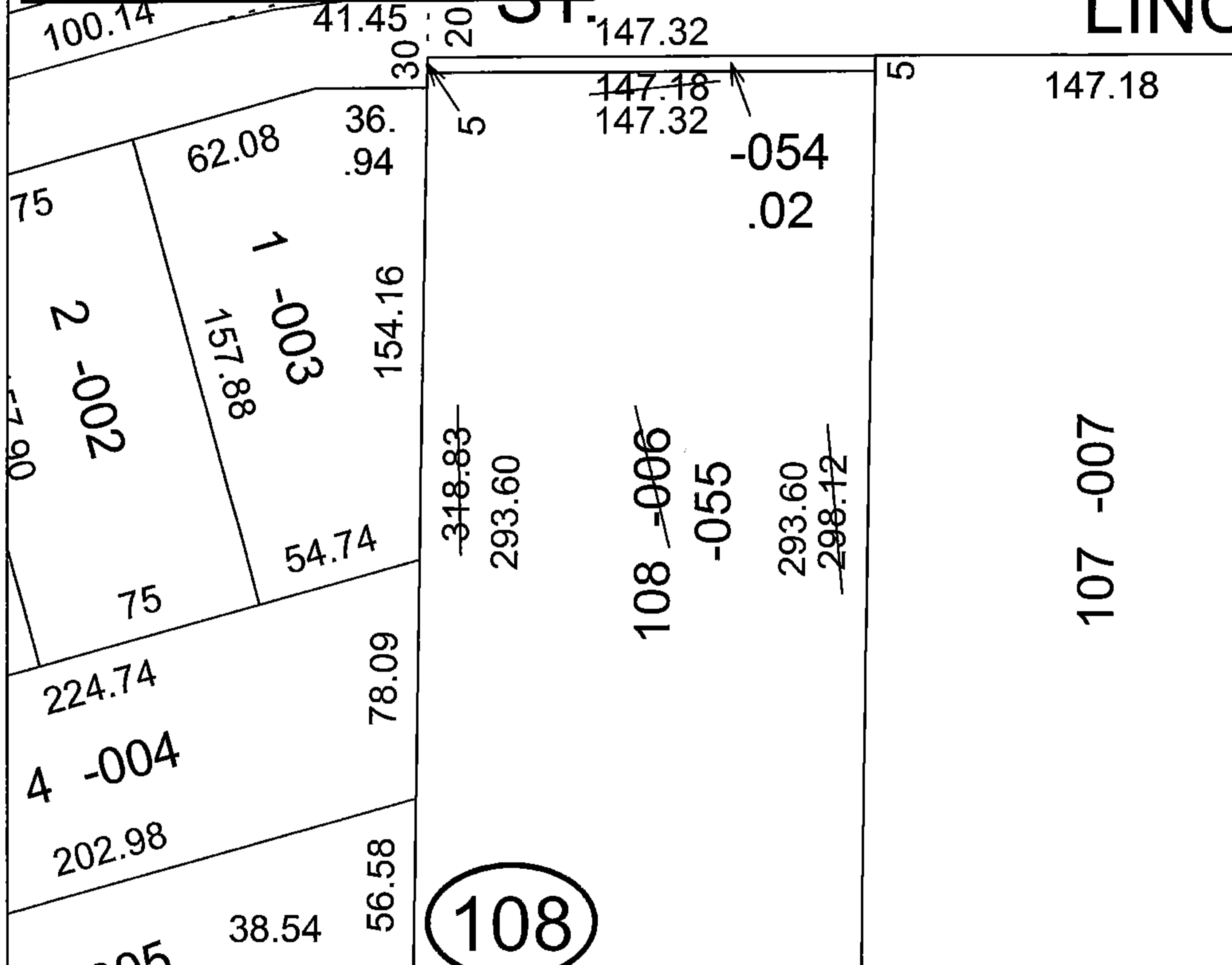
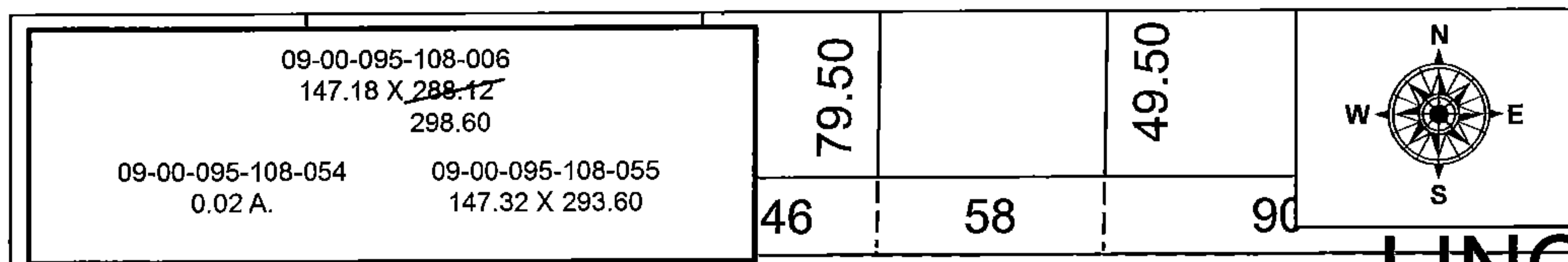


PARENT PARCEL: 09-00-095-108-006

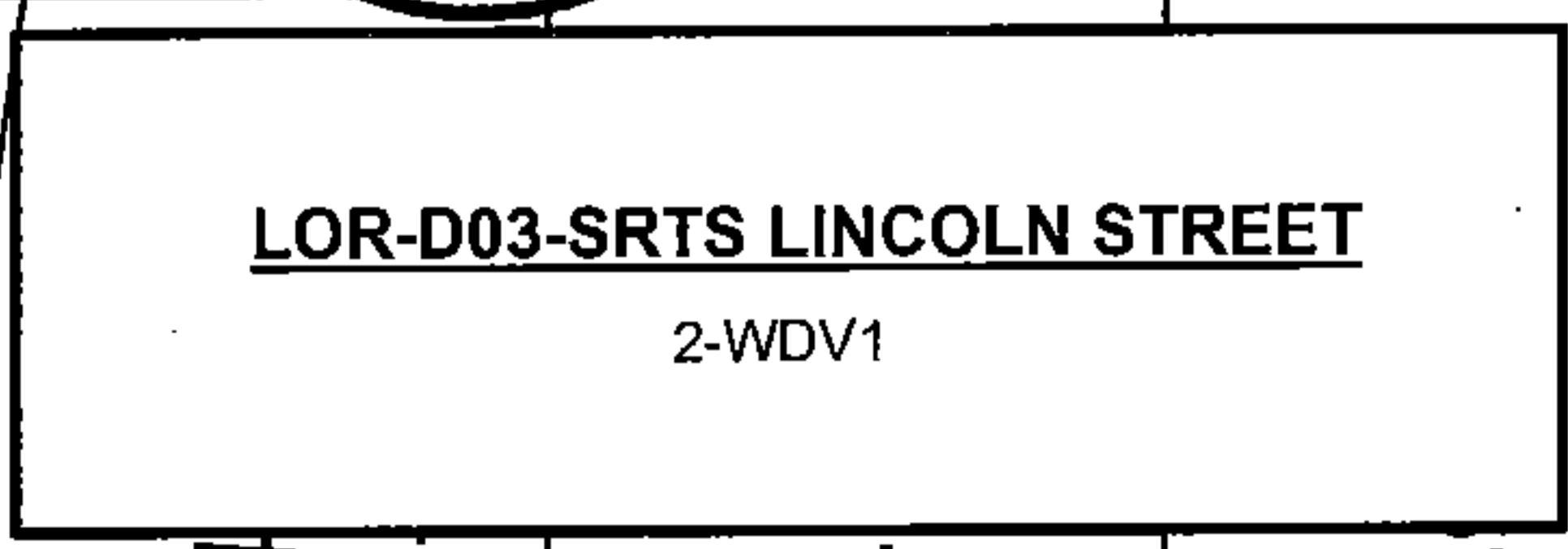
CHILD PARCEL: 09-00-095-108-054, -055

STARTING POINT: INTERSECTION OF C/L OF LINCOLN ST. AND C/L OF S. PROFESSOR ST.

16-00738



108



**SPLITS/DEEDS PROCESSED**  
 LORAIN COUNTY TAX MAP DEPARTMENT  
 226 MIDDLE AVE. ELYRIA, OH

SURVEYED BY: TREVOR A. BIXLER  
 CLOSURE: 1:2147483648  
 MAP PAGE(S): 9-00-095  
 APPROVED BY: RRM DATE: 10-19-16  
 SCALE: 1" = 50' PRIOR INSTRUMENT: OR 349/800