

PARENT PARCEL: 07-00-004-108-012, -013

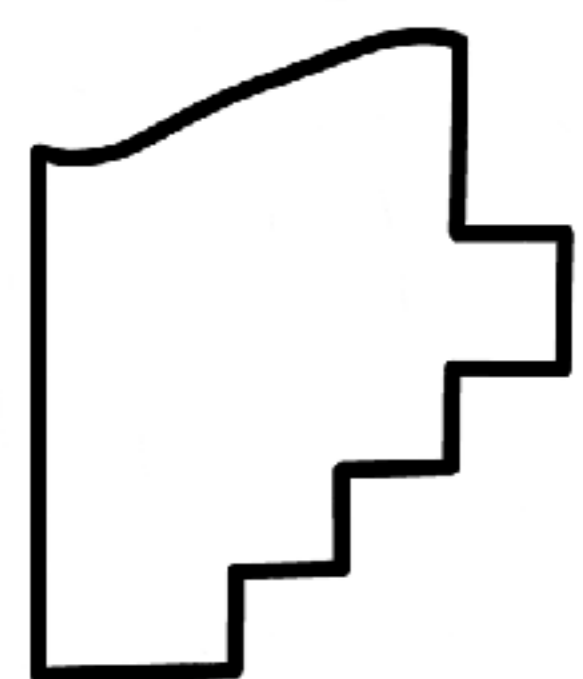
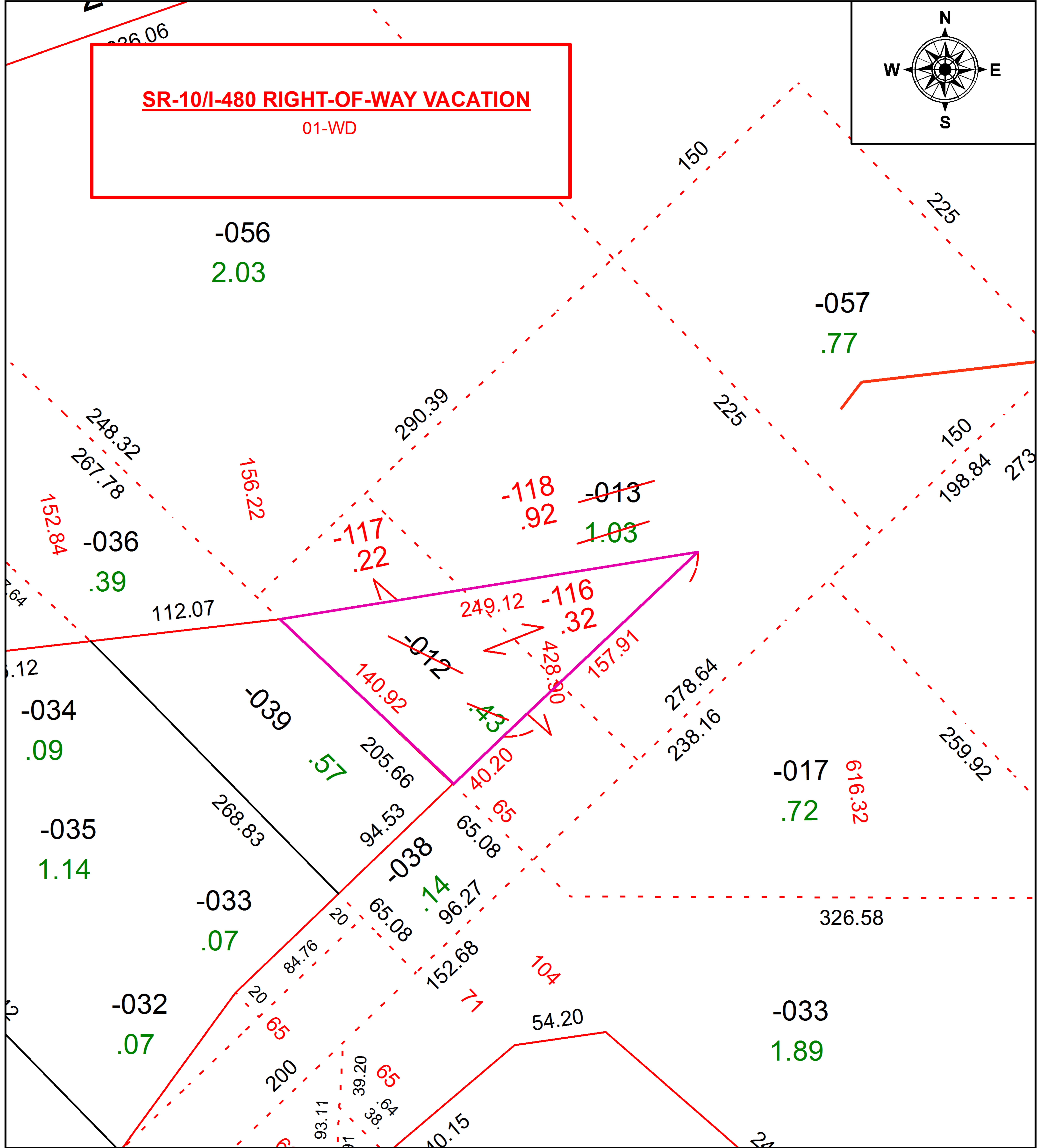
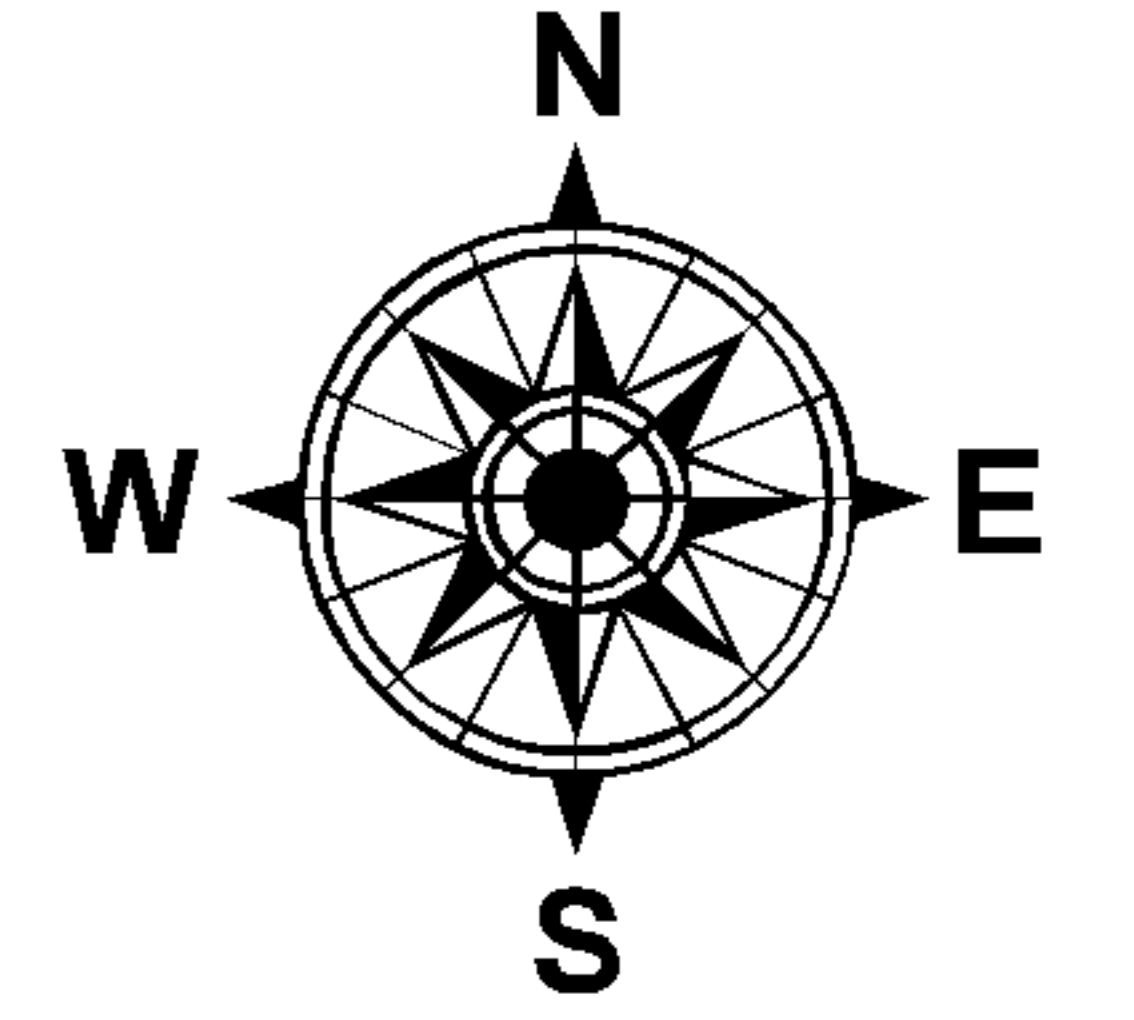
CHILD PARCEL: 07-00-004-108-116 THRU -118

STARTING POINT: INTERSECTION OF C/L OF S.R.10 AND EAST LINE OF LORAIN COUNTY

16-00734

SR-10/I-480 RIGHT-OF-WAY VACATION

01-WD



SPLITS/DEEDS PROCESSED

LORAIN COUNTY TAX MAP DEPARTMENT
226 MIDDLE AVE. ELYRIA, OH

SURVEYED BY: SCOTT J. HAWKINS

CLOSURE: 1:109,558

MAP PAGE(S): 7-00-004

APPROVED BY: RRM DATE: 3-11-16

SCALE: 1" = 75' PRIOR INSTRUMENT: D VOL. 984 PG.389