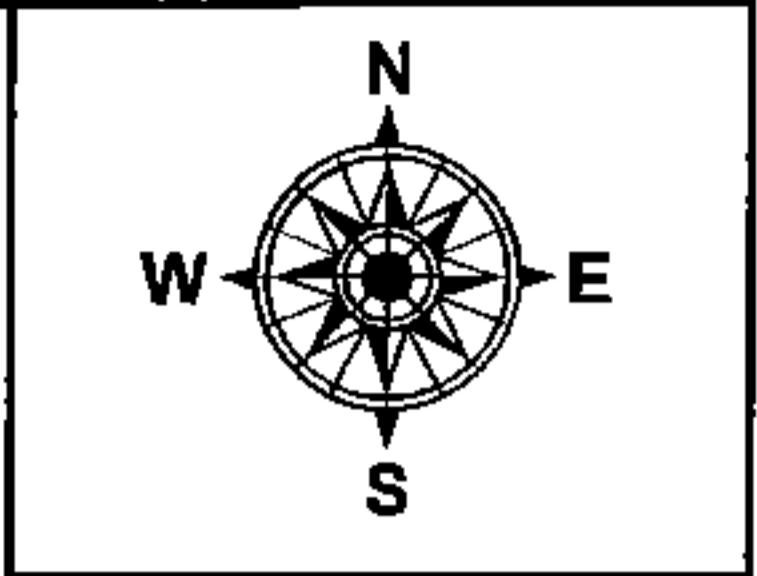


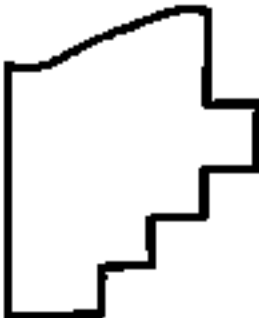
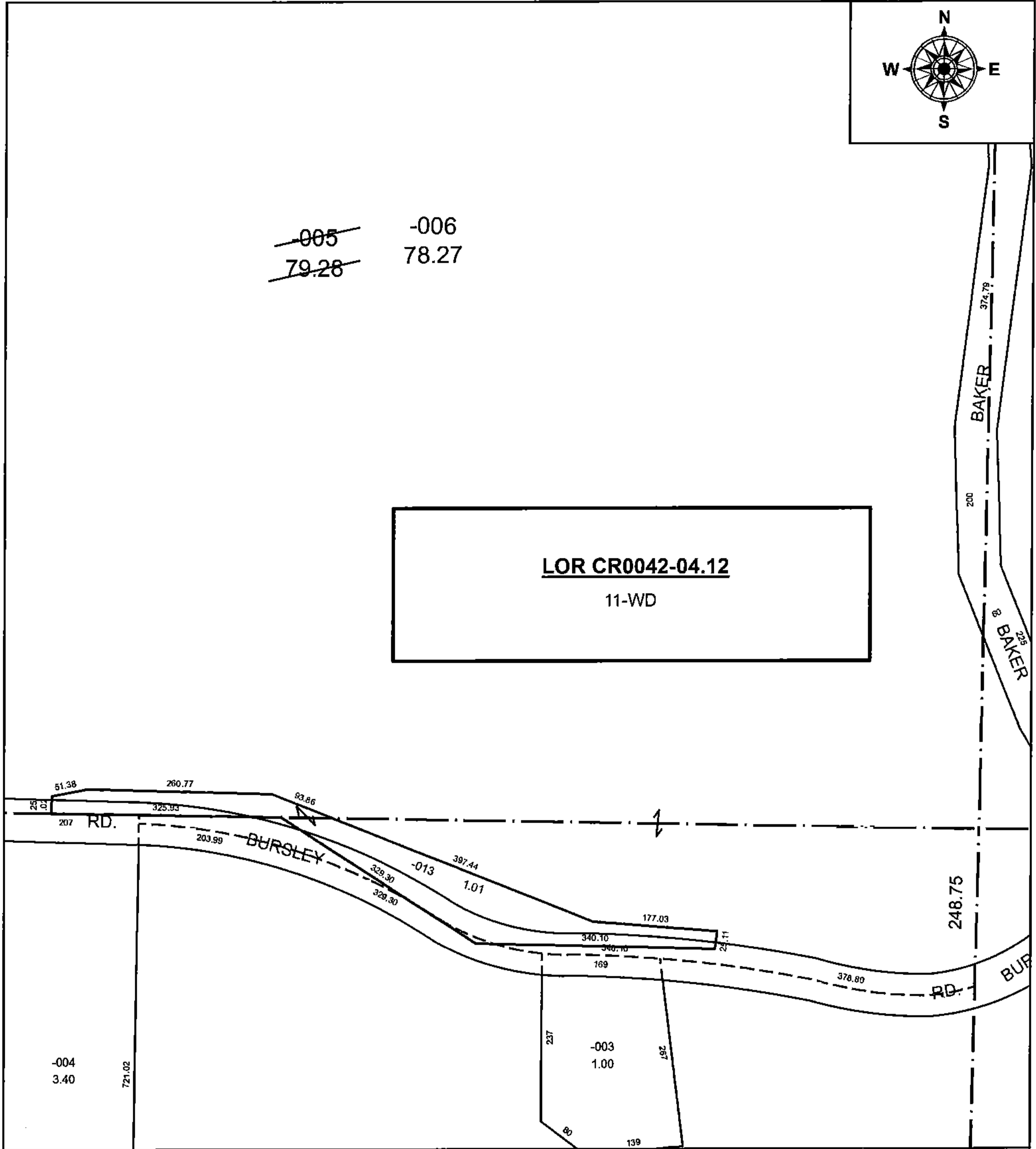
PARENT PARCEL: 21-05-036-000-005
 CHILD PARCEL: 21-05-035-000-013, 21-05-036-000-006
 STARTING POINT: NORTHEAST CORNER OF O.L.35

16-00733



~~005~~ -006
~~79.28~~ 78.27

LOR CR0042-04.12
 11-WD



SPLITS/DEEDS PROCESSED
 LORAIN COUNTY TAX MAP DEPARTMENT
 226 MIDDLE AVE. ELYRIA, OH

SURVEYED BY: BRIAN P. MCCARTNEY
 CLOSURE: 1: 501,604
 MAP PAGE(S): 21-A
 APPROVED BY: RRM DATE: 3-7-16
 SCALE: 1" = 180' PRIOR INSTRUMENT: OR 467/140