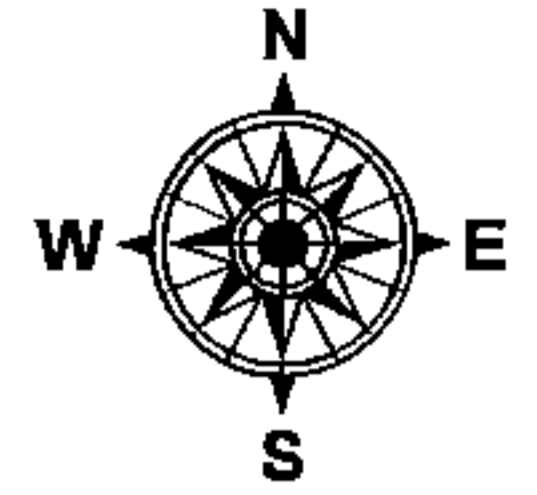


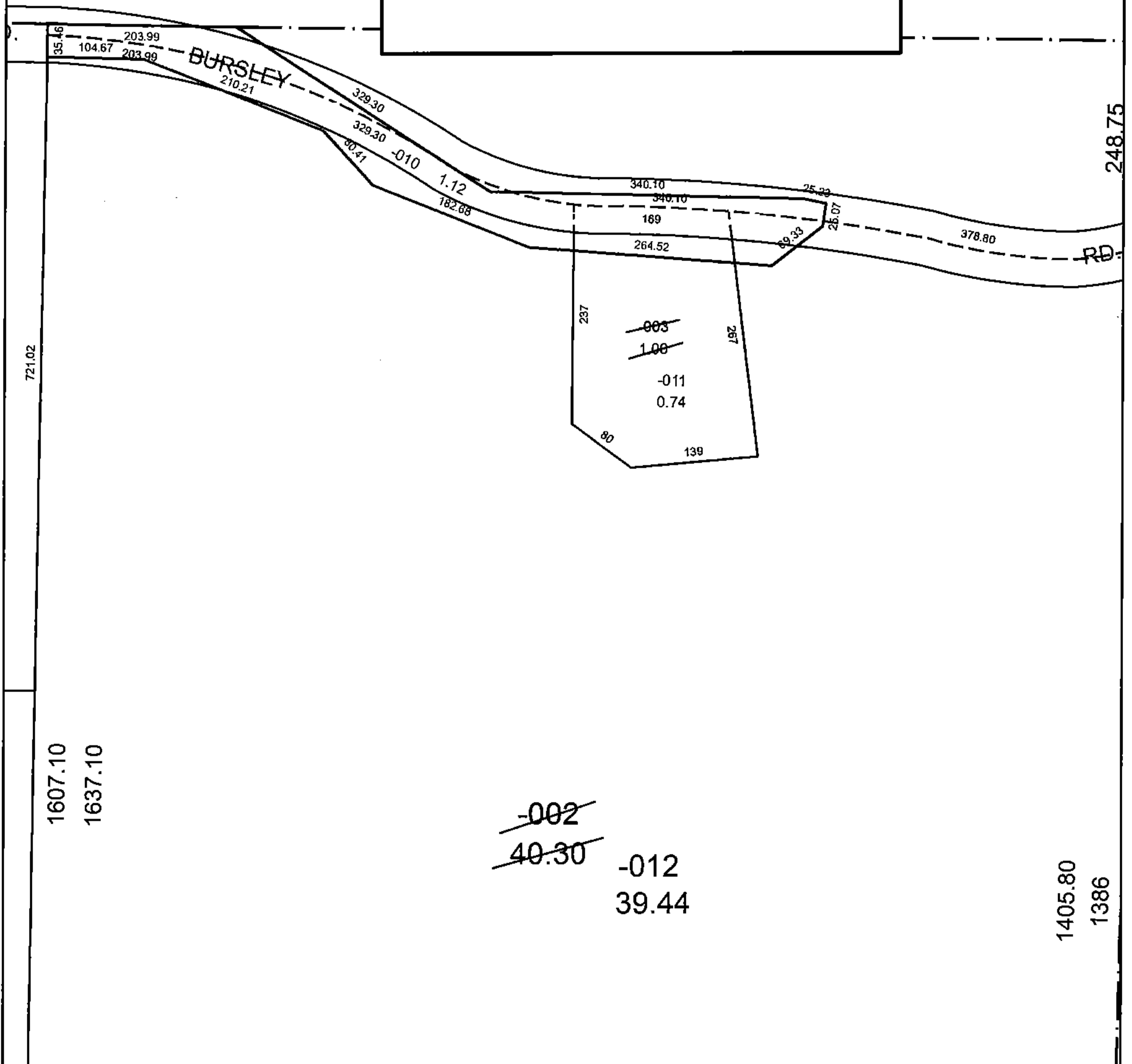
PARENT PARCEL: 21-05-035-000-002, -003
CHILD PARCEL: 21-05-035-000-010 THRU -012
STARTING POINT: NORTHEAST CORNER OF O.L.35

16-00732

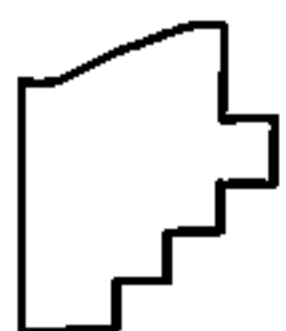


LOR-CR0042-04.12

12-WD



~~-002~~
~~40.30~~ -012
39.44



SPLITS/DEEDS PROCESSED
LORAIN COUNTY TAX MAP DEPARTMENT
226 MIDDLE AVE. ELYRIA, OH

SURVEYED BY: BRIAN P. MCCARTNEY
CLOSURE: 1:205,111
MAP PAGE(S): 3-00-099-B
APPROVED BY: RRM DATE: 3-7-16
SCALE: 1" = 150 PRIOR INSTRUMENT: 20100335629