

SEE 10-00-003-A

1318.32
1318.64

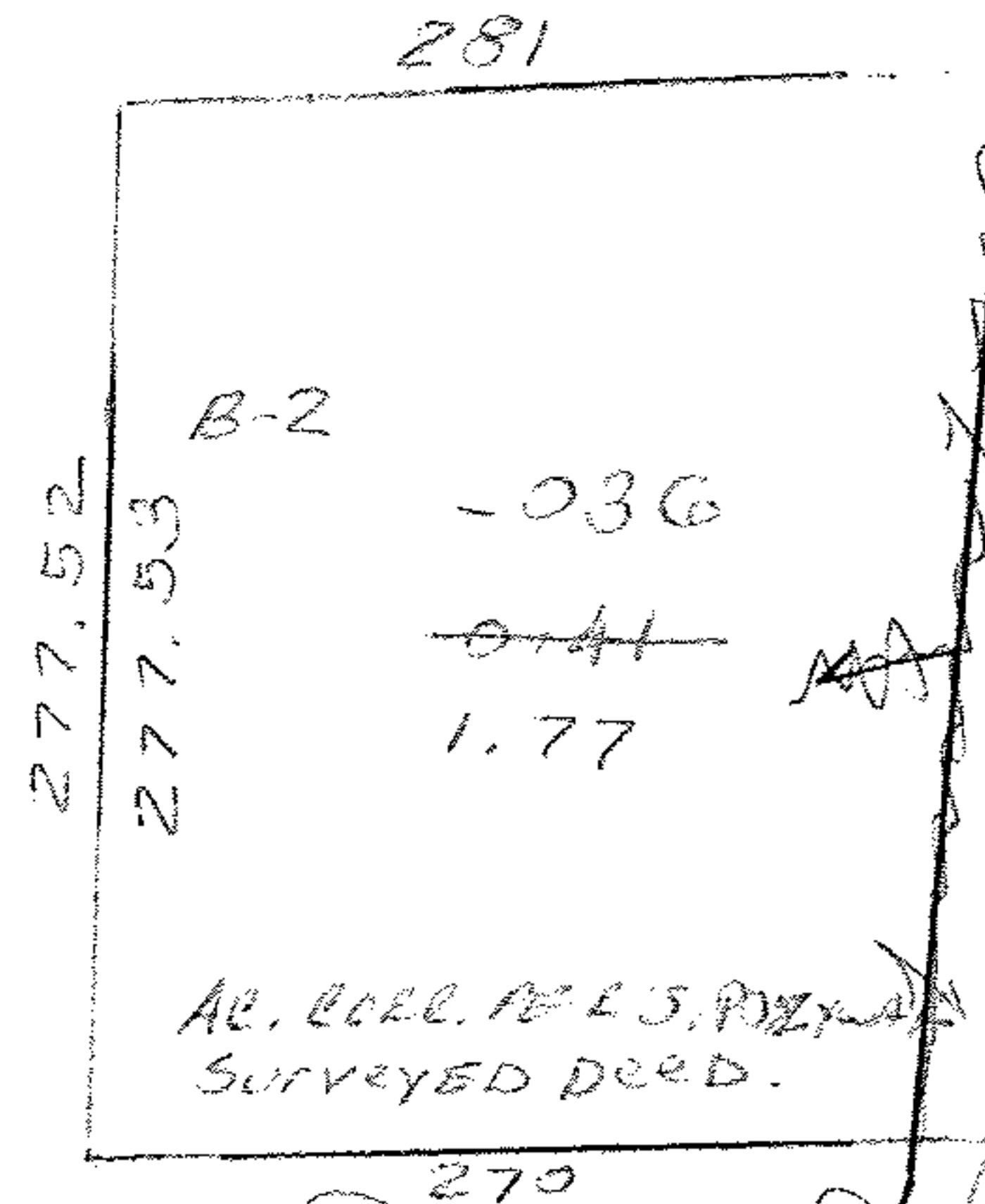
PT. 001
PT. 22.00 A.

- 032

1297.44

18.00 A

PT. 002
PT. 18.00 A.



1269.20

1246.55

1246.55

-025
13.01 A

-034
13.13 A.

283.01
282.62
287.62

-028
.99 A.

220.78

121

1020.37

1020.37

T.M.
10.1.85
#15971

APPROVED
LORAIN CO.
MAP DEPT.
DATE 7-10-85
PAGE 10-00-003-F
BY C. Francois
VOID AFTER 15971

10-00-003-F

RD. 7
323.58

284.67

64.27

MOU

262.38

89° 46'

608.27

345.81

89° 46'

59.31

543.23

A-1

E 10-B