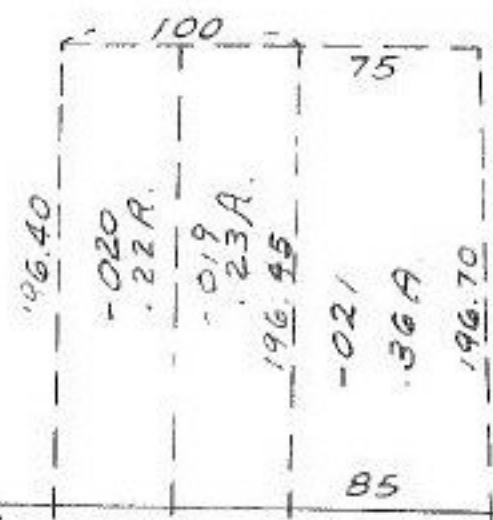


-049
0.98 A
565.15

-036
121 A
564.86
565.15

-028
4.34 A.

268.3
-018
1.00 A.
160.20



05-00-094

Remedy & S. J. J. J.
1009/1621

1069/921
330 @ 20 rods
328.31
-053
0.14 A.

NICKEL, JENNIE

~~-026~~ -054
~~5.00 A.~~ 1.86 A.

SEE SURVEY
A. KOEPP

#15952

APPROVED
LORAIN CO.
MAP DEPT.

DATE 12-24-84
PAGE 5-00-094-B

BY T. McVain
VOID

T.M.
7-18-85

914.0
924

103

40 RODS

330
QUARRY
N 2-50 E
South 20 rods

96.72

301.40 RD.

624 660

299

86

50.20

100

85

216.50

90

75

256

36