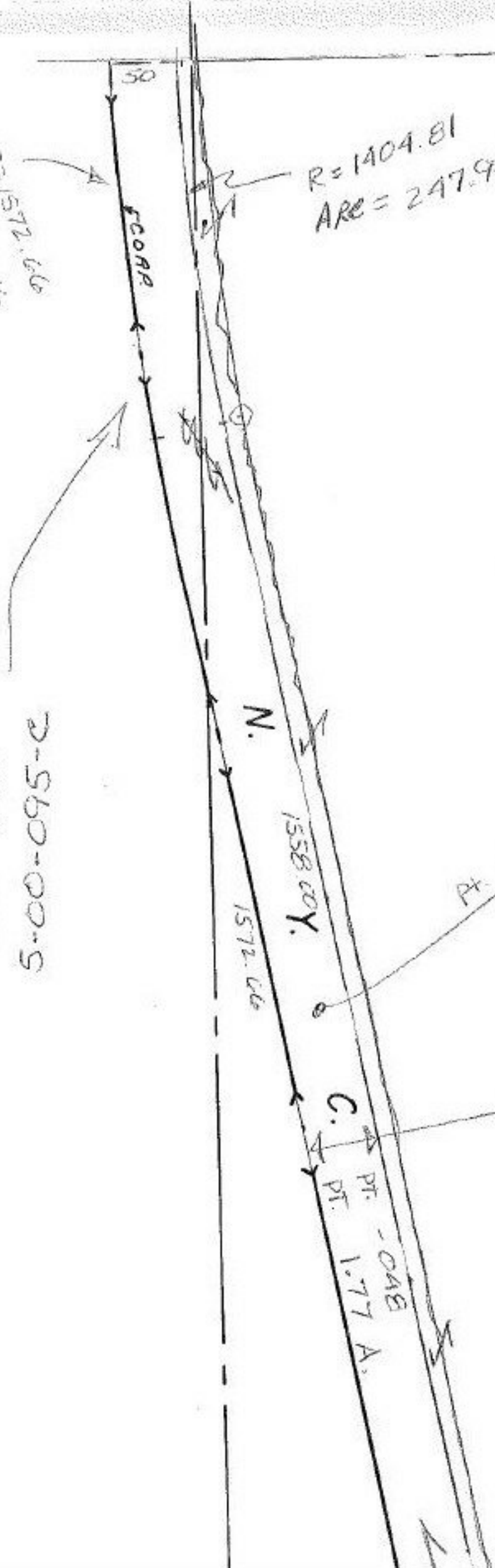


50
 R = 1404.81
 AREA = 247.95
 $Q = 1572.66$
 $PM = 256.16$

SEE PAGE
 5-00-095-C



PT. 05-00-006-000-048
 PT. 1.77 A.

50'
 C.
 PT. -048
 PT. 1.77 A.

#15943

APPROVED
 LORAIN CO.
 MAP DEPT.

DATE 12-17-84

PAGE 5-00-006-A

BY T. McVain

VOID
 VETPA

T.M.
 6-5-87

T.M.
 7-31-85

PT. -0
 PT. 1