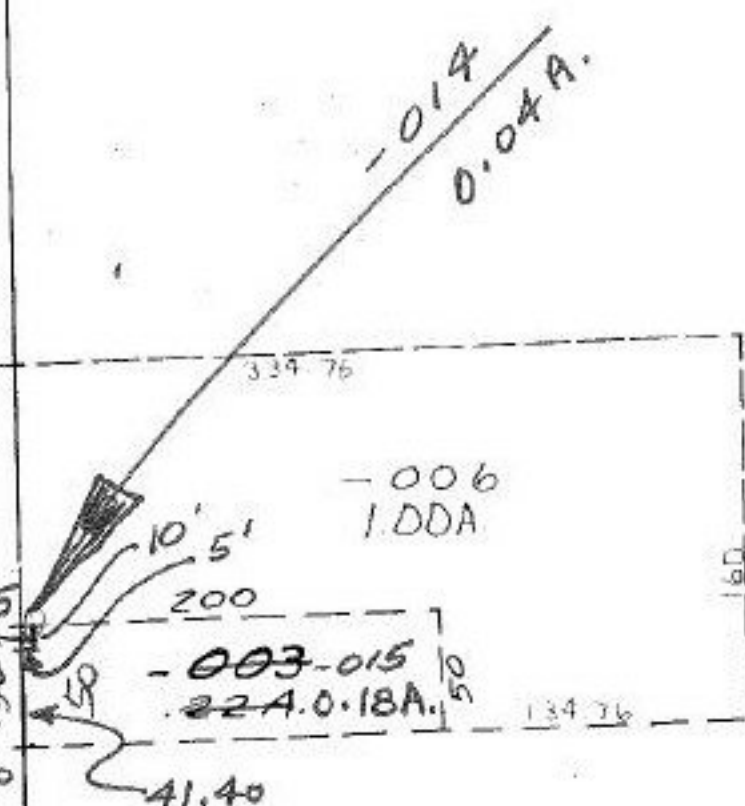


113

-007
20.78A.

WOOSTER AVON LAKE

51.40
35
50
30



FEB 8 1985



#15932

APPROVED LORAIN CO. MAP DEPT.	
DATE 12-6-84	
PAGE 100-017 G	
BY <i>J. H. [unclear]</i>	
VOID AFTER	15932

J.H. 2/8/85
1320

-004
3.00A.

-005
3.00A.
1320

N. Y. C. & St. L.

SEE 4-