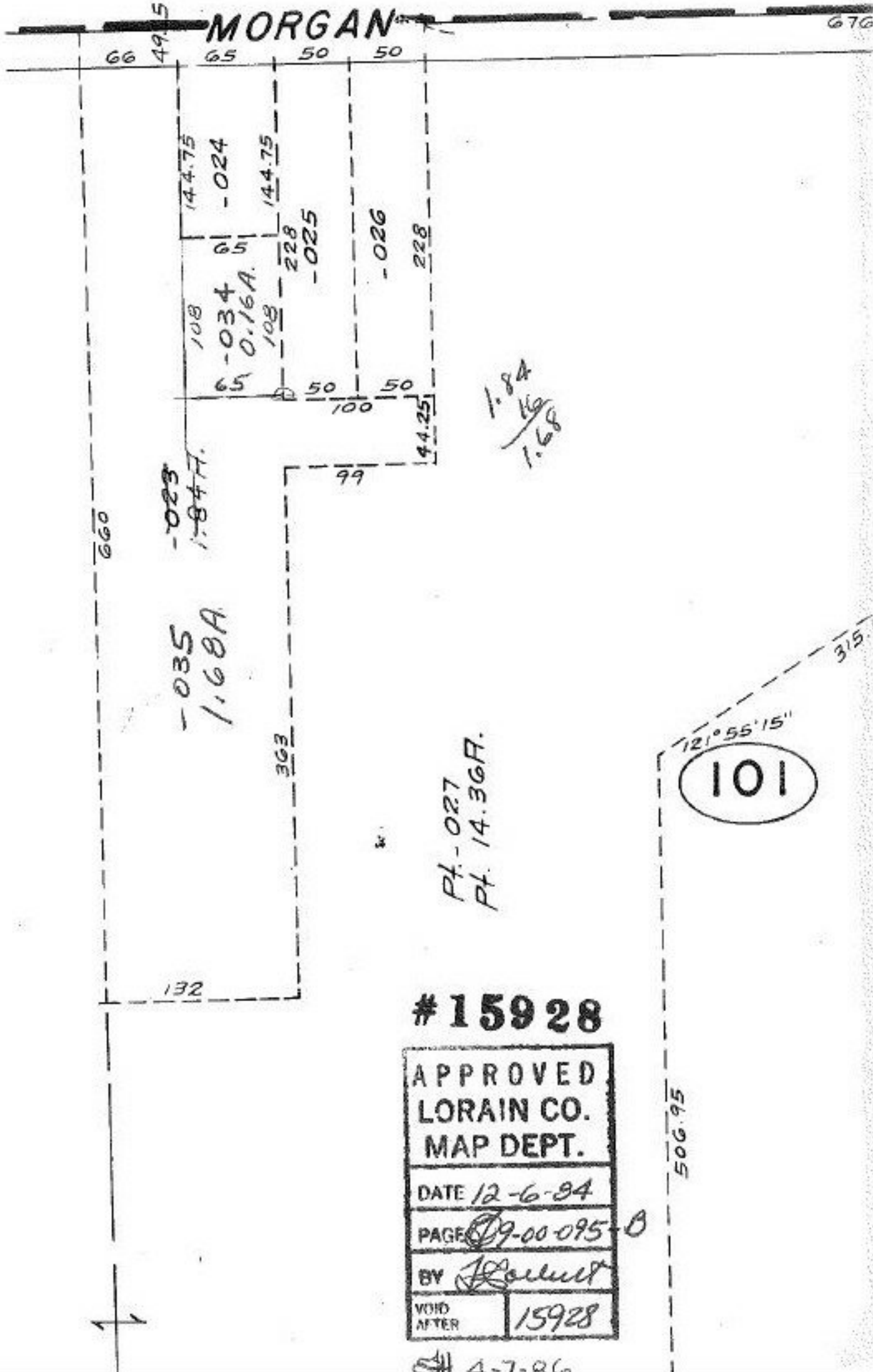


LORAIN COUNTY MAP DEPT.  
P. P. No. *[Signature]*



Pt. - 027  
Pt. 14.36A.

# 15928

APPROVED LORAIN CO. MAP DEPT.	
DATE	12-6-84
PAGE	19-00-095-0
BY	<i>[Signature]</i>
VOID AFTER	15928

4-7-86