

PI 795725.21  
 A 34° 35' - 45"  
 D 1° - 30'  
 T 1189.56  
 L 2306.39  
 E 180.94

- 06A  
 383  
 377.13  
 0.6A A.  
 425.78

- 065 - 002  
 5.33 A. 5.97A  
 795

5.97  
 0.64  
 5.33

011 997153

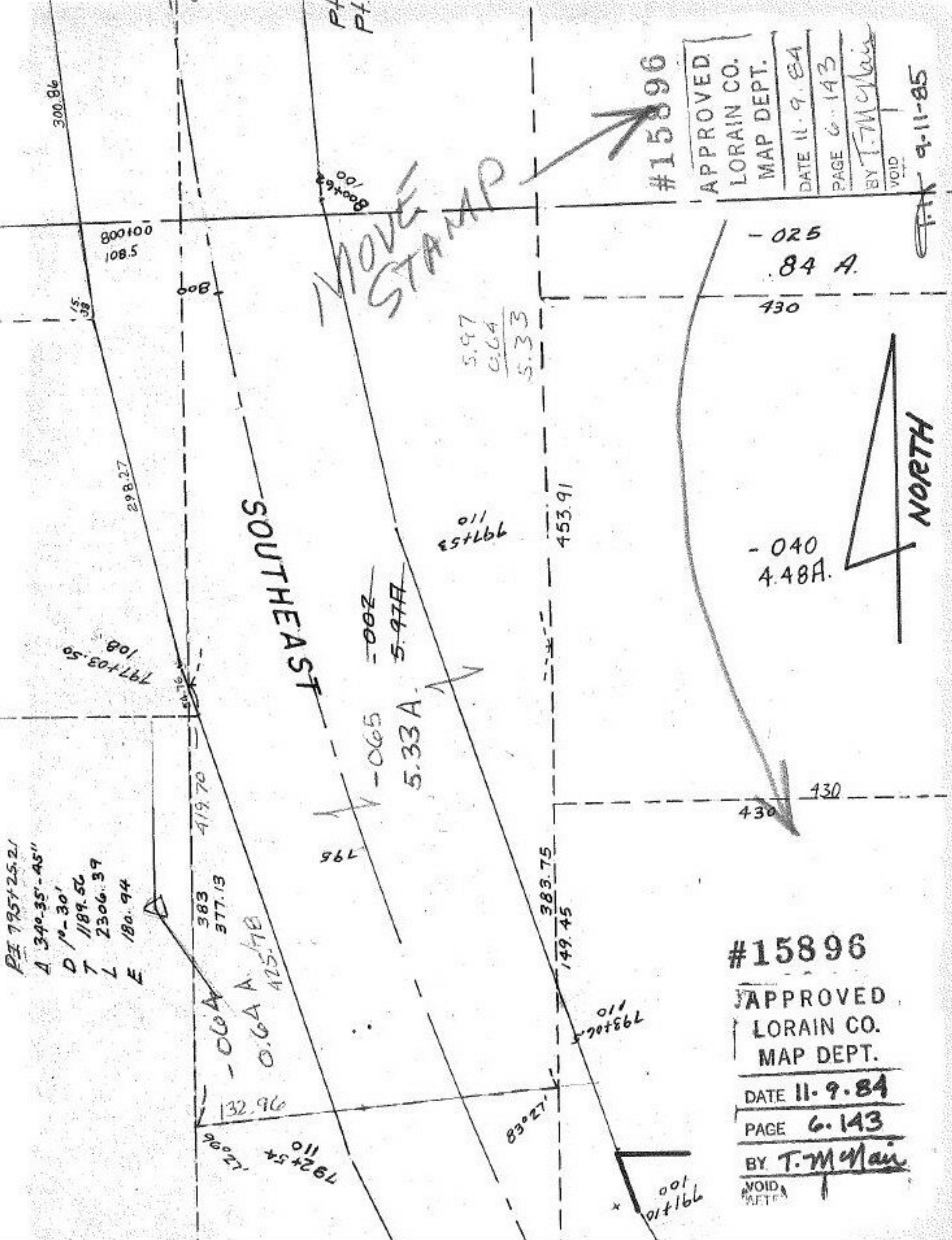
383.75  
 149.45

011 793106

001 791100

83° 27'

192+54  
110  
12096



#15896

APPROVED  
 LORAIN CO.  
 MAP DEPT.  
 DATE 11.9.84  
 PAGE 6.143  
 BY T.M. Main  
 VOID

- 025  
 84 A.

- 040  
 4.48A.

#15896

APPROVED  
 LORAIN CO.  
 MAP DEPT.  
 DATE 11.9.84  
 PAGE 6.143  
 BY T.M. Main  
 VOID

9-11-85