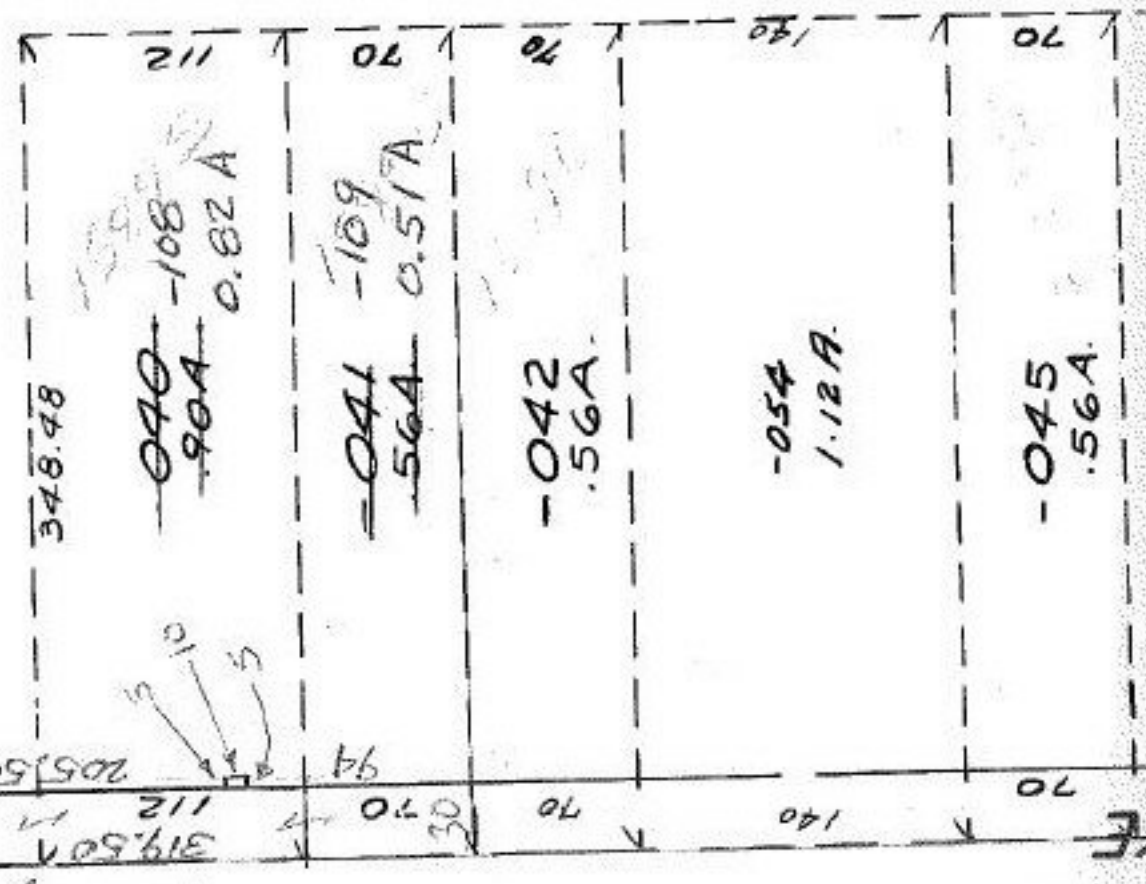


-065
5.75 A.



2''



Pt. -107
Pt. 45.21 A

~~Pt. 039~~
~~Pt. 45.30A~~

#15895
APPROVED
LORAIN CO.
MAP DEPT.

FEB 8 1985

DATE 12-3-84
PAGE 4-00-017-C
BY T. Williams
VOID
YES/EA

SFF

110W