

- 001
60.00A.

669.25

79

- 002
40.00A.

669.25

514.89

1346/712

SEE

2554.42

- 006
24.23 R.

160.82

- 042
0.46 A.

1281.18

309.92

- 005

6.00 R.

1281.18

1279.24

~~12.00A~~

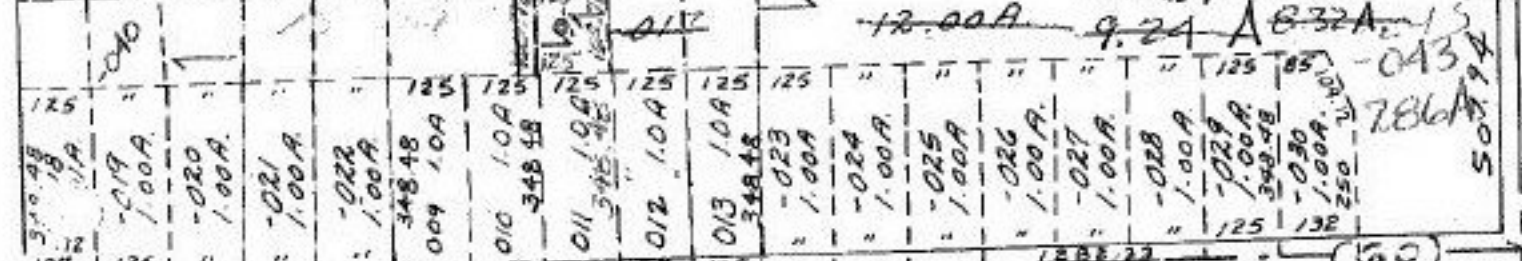
~~9.24 A~~

~~832A~~

~~043~~

786

507.74



1467.30

RD.

8.32
- .46
7.86

- 001
10.00A.

1850.15
- 002
9.38A.

1850.70
- 003
10.00A.

- 004
10.00A.

- 005
1.00A.

- 017
4.41

- 018
1263.23

- 019
6.00 R.

- 008
4.48R.

- 020
13.38 R.

- 015
3.68A.

- 016
2.77A.

- 012
18.64A.

78

4-14-86
#15749

APPROVED
LORAIN CO.
MAP DEPT.

DATE 8-17-84

PAGE 12-A

BY T. McNeil

VOID
IF
REPRODUCED

482.97

498

- 009

21.84A.

570